



ABRITES DIAGNOSTICS FOR JAGUAR/LAND ROVER

User manual
version 2.0



Important notes

The Abrites software and hardware products are developed, designed and manufactured by Abrites Ltd. During the production process we comply to all safety and quality regulations and standards, aiming at highest production quality. The Abrites hardware and software products are designed to build a coherent ecosystem, which effectively solves a wide range of vehicle-related tasks, such as:

- Diagnostic scanning;
- Key programming;
- Module replacement,
- ECU programming;
- Configuration and coding.

All software and hardware products by Abrites Ltd. are copyrighted. Permission is granted to copy Abrites software files for your own back-up purposes only. Should you wish to copy this manual or parts of it, you are granted permission only in case it is used with Abrites products, has "Abrites Ltd." written on all copies, and is used for actions that comply to respective local law and regulations.

Warranty

You, as a purchaser of Abrites hardware products, are entitled of a two-year warranty. If the hardware product you have purchased has been properly connected, and used according to its respective instructions, it should function correctly. In case the product does not function as expected, you are able to claim warranty within the stated terms. Abrites Ltd. is entitled to require evidence of the defect or malfunction, upon which the decision to repair or substitute the product shall be made.

There are certain conditions, upon which the warranty cannot be applied. The warranty shall not apply to damages and defects caused by natural disaster, misuse, improper use, unusual use, negligence, failure to observe the instructions for use issued by Abrites, modifications of the device, repair works performed by unauthorized persons. For example, when the damage of the hardware has occurred due to incompatible electricity supply, mechanical or water damage, as well as fire, flood or thunder storm, the warranty does not apply.

Each warranty claim is inspected individually by our team and the decision is based upon thorough case consideration.

Read the full hardware warranty terms on our [website](#).

Copyright information

Copyright:

All material herein is Copyrighted ©2005-2021 Abrites, Ltd.
Abrites software, hardware, and firmware are also copyrighted
Users are given permission to copy any part of this manual provided that the copy is used with Abrites products and the “Copyright © Abrites, Ltd.” statement remains on all copies
“Abrites” as used in this manual synonymous with “Abrites, Ltd.” And all it’s affiliates
The “Abrites” logo is a registered trademark of Abrites, Ltd.

Notices:

The information contained in this document is subject to change without prior notice. Abrites shall not be held liable for technical/editorial errors, or omissions herein.
Warranties for Abrites products and services are set forth in the express written warranty statements accompanying the product. Nothing herein should be construed as constituting any additional warranty.
Abrites assumes no responsibility for any damage resulting from the use, misuse, or negligent use of the hardware or any software application.

Safety information

The Abrites products are to be used by trained and experienced users in diagnostics and reprogramming of vehicles and equipment. The user is assumed to have a good understanding of vehicle electronic systems, as well as potential hazards while working around vehicles. There are numerous safety situations that cannot be foreseen, thus we recommend that the user read and follow all safety messages in the available manual, on all equipment they use, including vehicle manuals, as well as internal shop documents and operating procedures.

Some important points:

Block all wheels of the vehicle when testing. Be cautious when working around electricity.

Do not ignore the risk of shock from vehicle and building-level voltages.

Do not smoke, or allow sparks/flame near any part of the vehicle fuel system or batteries.

Always work in an adequately ventilated area, vehicle exhaust fumes should be directed towards the exit of the shop.

Do not use this product where fuel, fuel vapours, or other combustibles could ignite.

In case any technical difficulties occur, please contact the

Abrites Support Team by email at support@abrites.com.

Table of contents

1. Introduction
2. Using the Abrites diagnostics for JLR
3. Standard Diagnostics
4. Special Function Key learning
 - 4.1 Key Learning/Module Initialization (2012-2018)
 - 4.2 Key Duplicator (2018+)
 - 4.3 Key learning by BCM EEPROM dump (2018-2026)
 - 4.3.1 BCM EEPROM Wiring
 - 4.4 Remote control synchronization
 - 4.5 Restore used Abrites TA54/TA57/TA66/TA67 keys
5. Special Function Cluster calibration
6. Special Function NV DATA
7. Special Function Flash
8. Special Function “Immo Advanced”
9. EM015 - JLR Ultra-Wide Band Emulator
 - 9.1 EM015 - Ultra-Wide Band Emulator update procedure
10. Dump tool
11. KP002 JLR Alarm Unblock Device
 - 11.1 KP002 by OBDII in the vehicle
 - 11.2 KP002 on bench
12. Special Function “Read Vehicle Info”
 - 12.1 Rolling code synchronization
 - 12.2 Replace RFA
 - 12.3 Add new key
 - 12.4 Clear keys

Table of contents

12.5 Remote control synchronization

12.6 Alarm OFF

List of revisions

Date	Chapter	Description	Revision
01.10.2015	ALL	Document created	1.0
13.06.2017	8	Immo Advanced	1.1
12.11.2020	9	Key Learning Special	1.2
24.02.2021	9	Key Learning Special	1.3
11.03.2021	9	Key Learning Special	1.4
11.03.2021	10	Dump tool	1.4
22.11.2021	9.1	EM015 - UWB Emulator	1.5
02.08.2022	9.2	EM015- UWB Emul. Update	1.6
01.03.2023	11	KP002	1.7

List of revisions

Date	Chapter	Description	Revision
01.11.2023	12	Abrites Key Reset	1.8
11.03.2026	13	Read vehicle info	1.9
18.06.2026	4	SpecialFunction KeyLearning	2.0

1. Introduction

“Abrates Diagnostics for Jaguar/ Land Rover” is a Windows PC based diagnostic software for Jaguar/ Land Rover vehicles. With the help of this software you can perform complete diagnostic operations of all vehicles. For proper operation of your diagnostic software you will need a corresponding interface for connection between your PC and vehicle named “AVDI”. AVDI is an interface produced by Abrites Ltd. intended to act as an interface between the PC and the electronic control units. AVDI should be used with ABRITES software produced by Abrites Ltd.

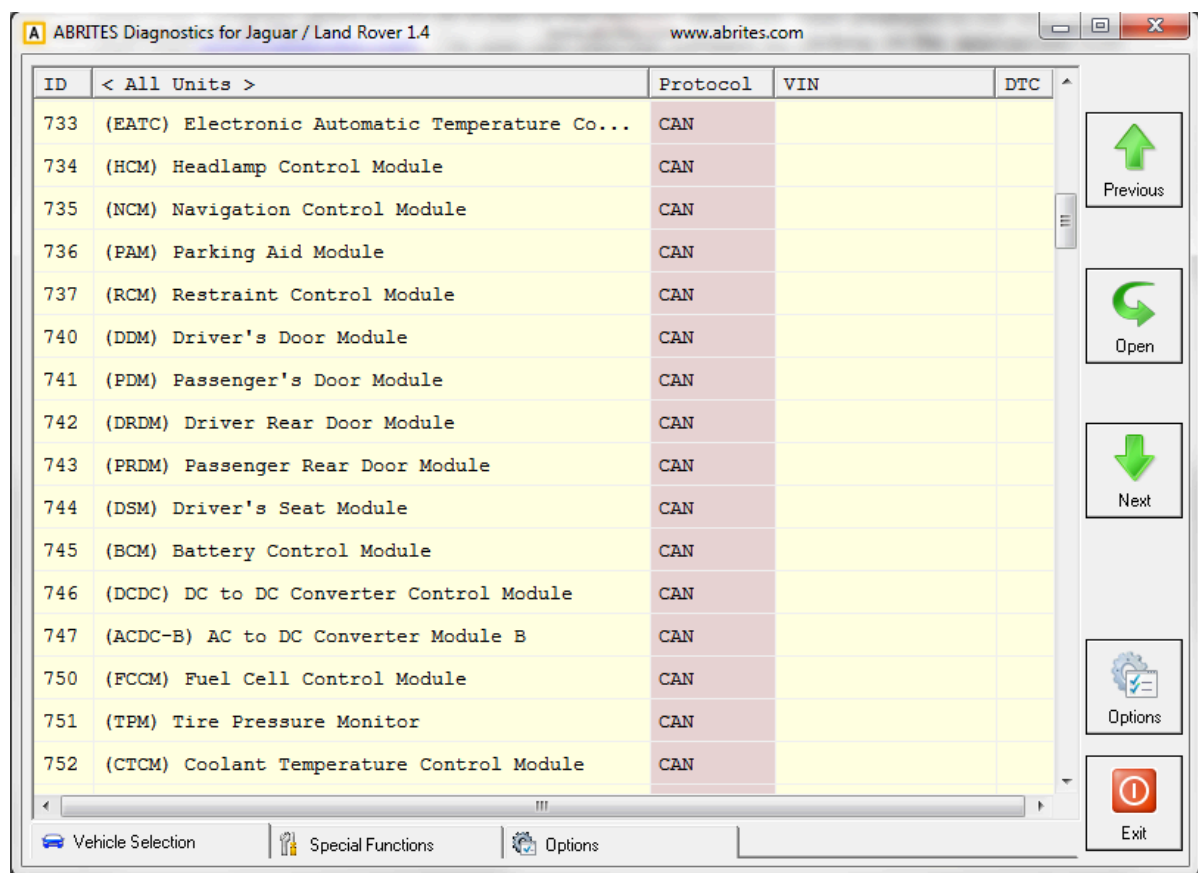
ABRITES is a trade mark of Abrites Ltd.

ABRITES Diagnostics for Jaguar and Land Rover provides the user with the ability to perform dealer-level diagnostic functions, such as module identification, both basic and detailed, reading of diagnostic trouble codes (DTCs), clearing of DTCs and many others.

2. Using the Abrites diagnostics for JLR

The Abrites diagnostics for Jaguar/ Land Rover is installed together with the rest of the Abrites diagnostic software applications as a part of the Abrites diagnostic suite provided to the user via e-mail. The user can start the software by clicking on the appropriate icon from the Abrites “Quick start” menu.

Once the Jaguar/ Land Rover icon is selected the software will start and the user will see the following screen:

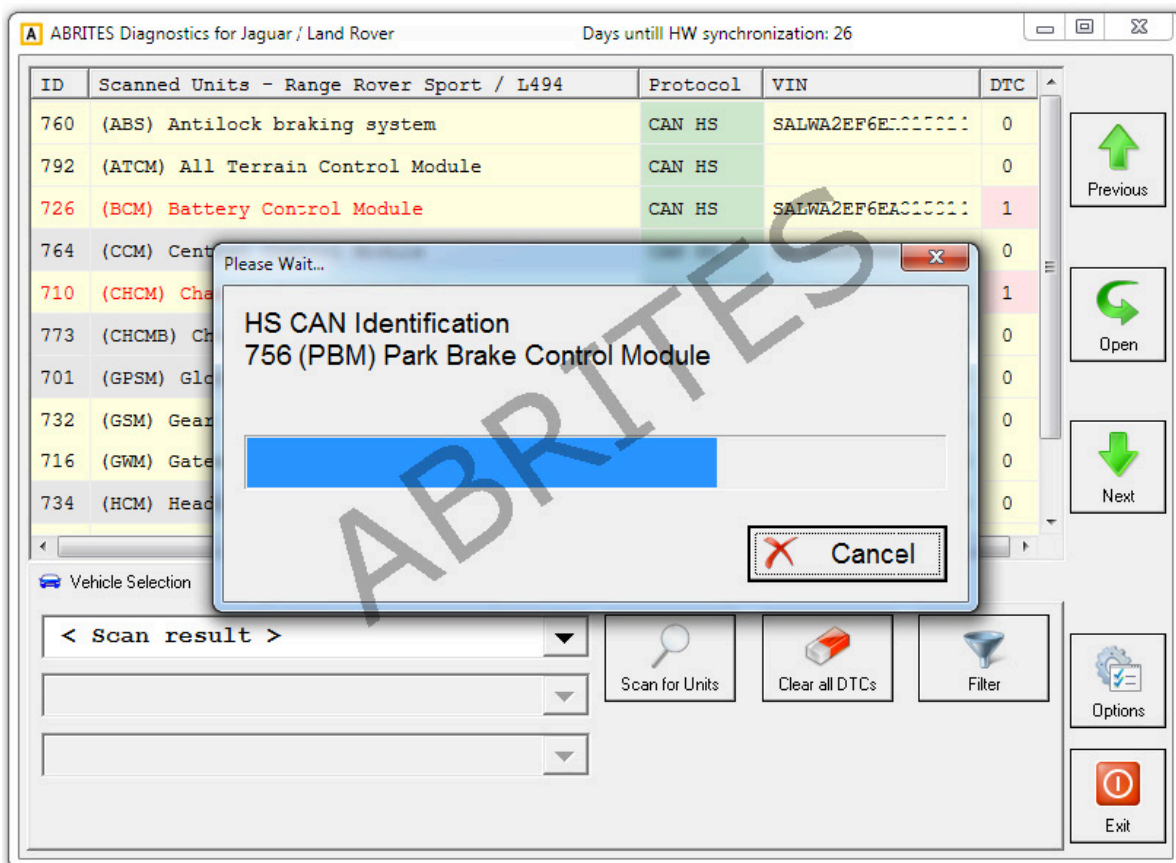


This is the main screen of the software and it shows all the navigation buttons as well as the ones for vehicle selection, scanning and general diagnostic.

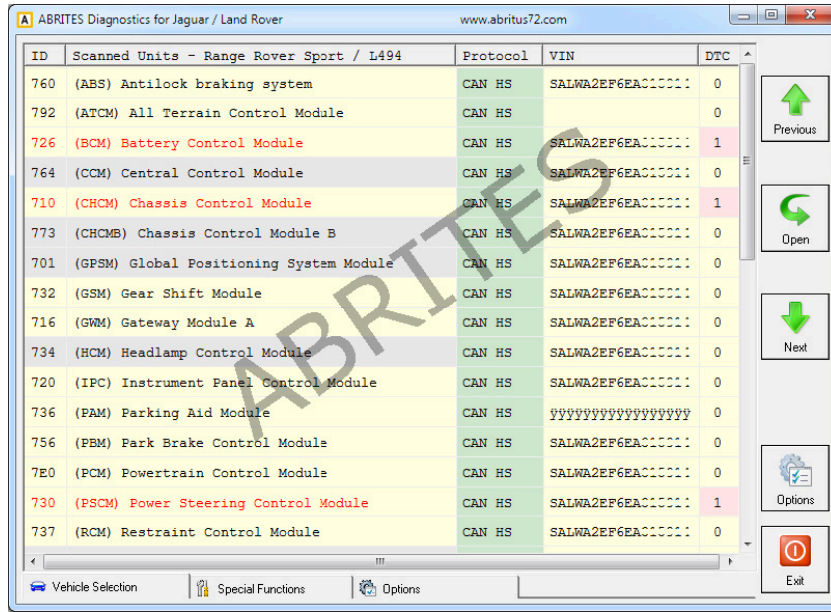
3. Standard Diagnostics

Standard diagnostics within the context of the Abrites diagnostics for Jaguar and Land Rover refers to functions such as device scanning for all the electronic control modules incorporated in the supported vehicles, reading of the identification data for all the modules, reading and clearing diagnostic trouble codes as well as service functions.

Device scanning allows the user to connect to the electronic modules of the vehicle and see the identifications for the them, the amount of diagnostic trouble codes for each one as well as the VIN numbers assigned to the separate units.

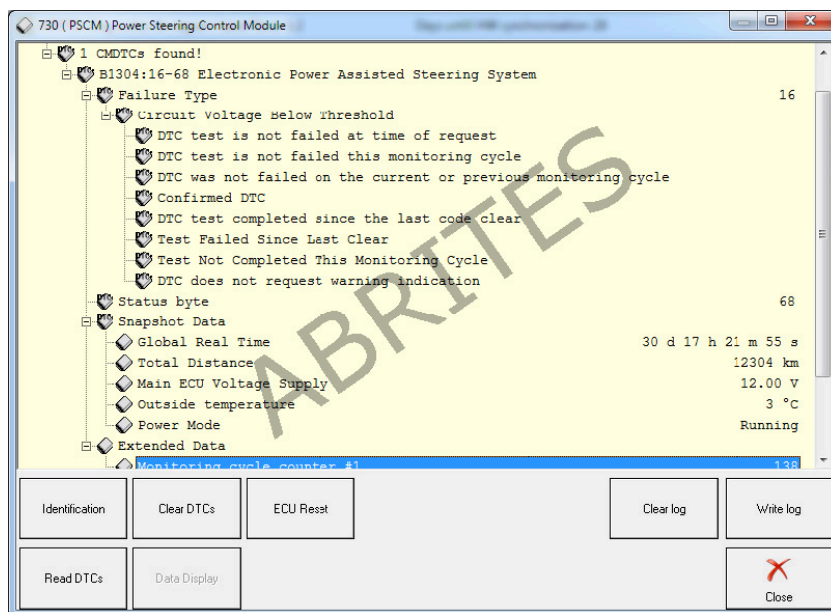


Once the scan is completed the details are displayed in the main window:



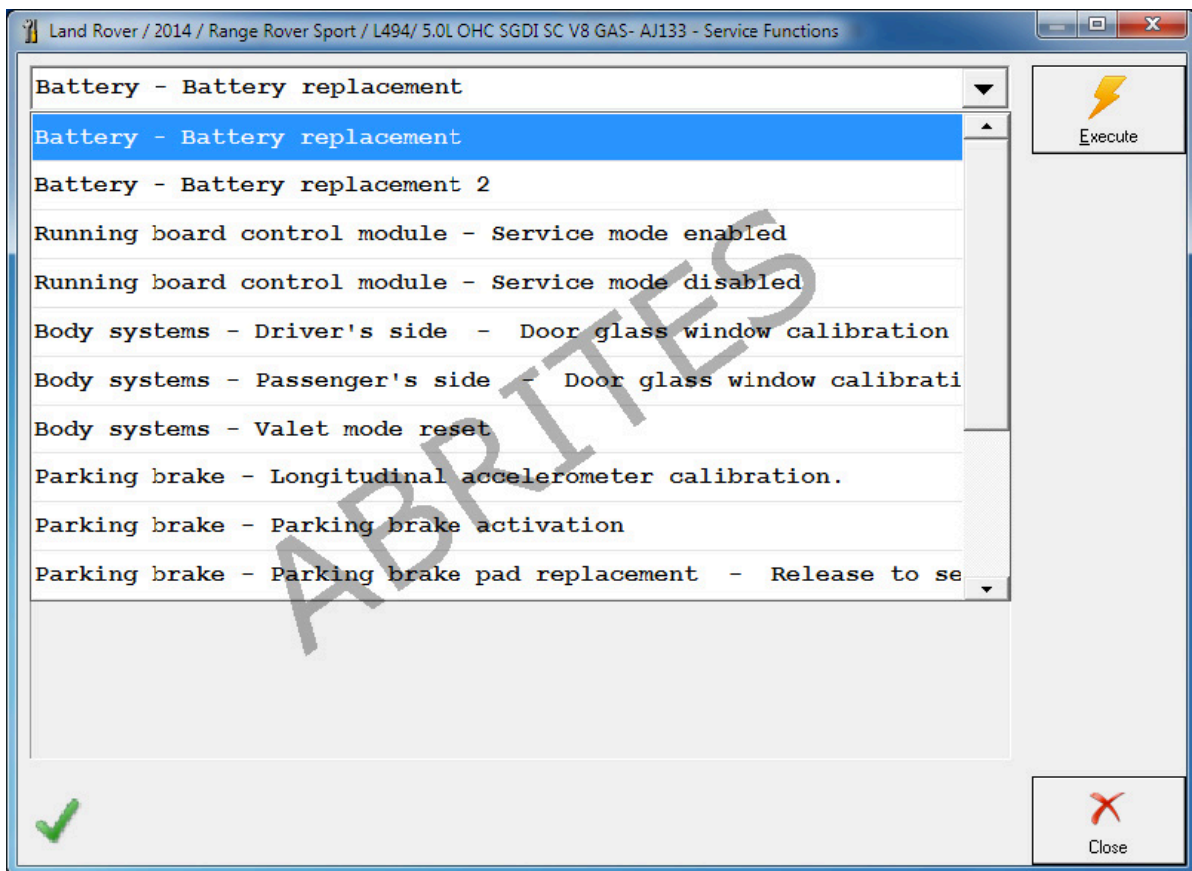
Diagnostic trouble codes and live data monitoring

When the initial connection with the vehicle is established the user can select an electronic module and enter by clicking over it. In the following screen the full identification of the module can be displayed. Also the DTCs will be shown together with the live data from the vehicle.



Performing service functions for the Jaguar/ Land Rover vehicles

This function allows the user to complete the process of the vehicle service or maintenance by registering their modification into the vehicle's ECUs. This functionality also allows the calibration of modules, and testing on them.



4. Special Function Key learning

This special function includes the following functionalities:

- Key Learning /Module Initialization (2012-2018)
- Key Duplicator (2018+)
- Key Learning (including AKL) by BCM EEPROM dump (2018-2026)
- Remote Control Synchronization
- Restore used Abrites TA54/TA57/TA66/TA67 keys

4.1 Key Learning/Module Initialization (2012-2018)

This is a functionality dedicated to key learning for Jaguar/ Land Rover vehicles by OBDII port ,equipped with unlocked KVM/RFA modules.

The vehicles currently supported by this function are described below:

Land Rover:

Evoque (L538) - 2011- 2014

Range Rover Sport (L494) - 2013- 2014

Range Rover (L405) - 2012 – 2014

Discovery LR4 – 2010-2014

Freelander 2 (L359) - 2006–2014

Jaguar:

F-Type - 2013-2014

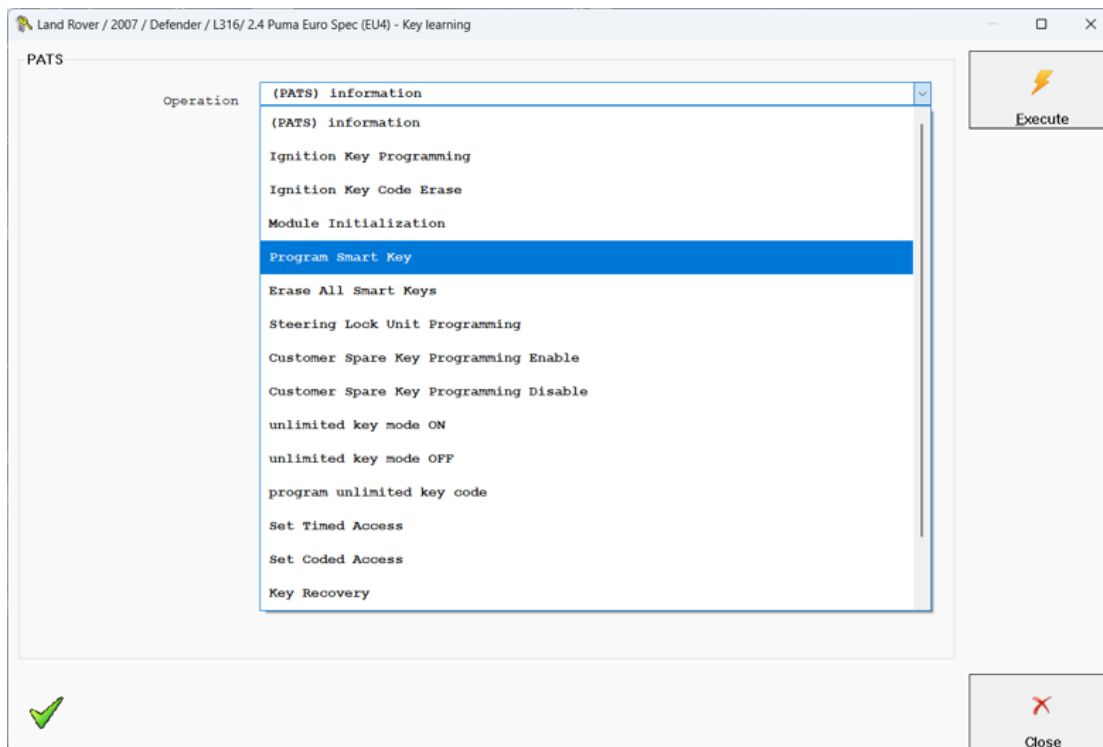
XF (X250) - 2007 -2014

XJ (X351) - 2010 -2014

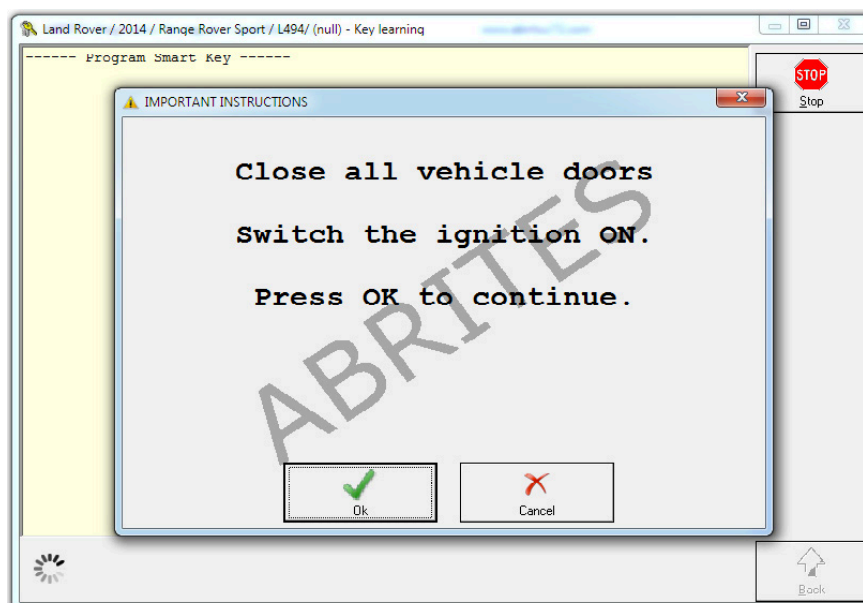
XK - 2006 -2014

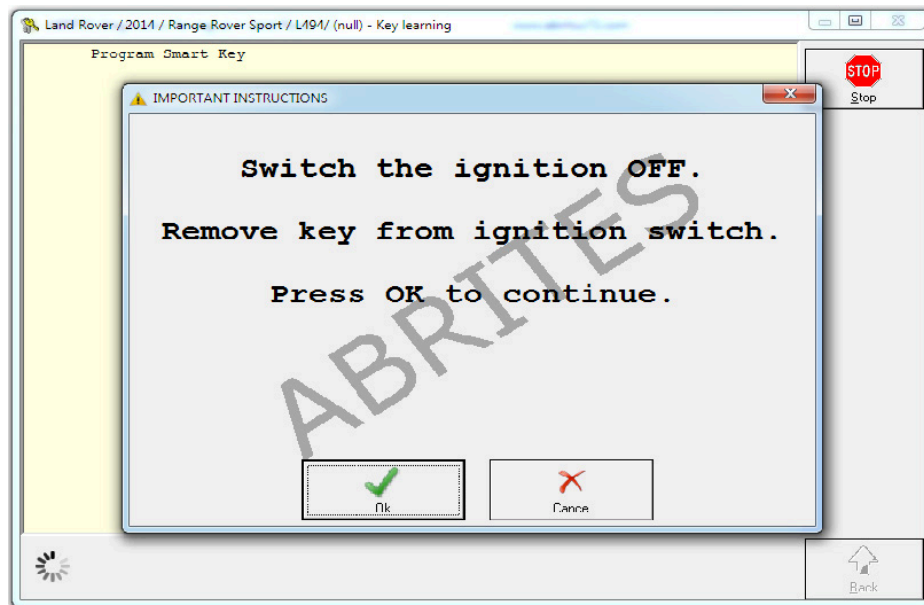
Procedure steps :

The first step is to select the vehicle and the requested operation:



After that, the software will start the on-screen guidance. Please follow the steps and place the key in the ignition and set it to the ON position:

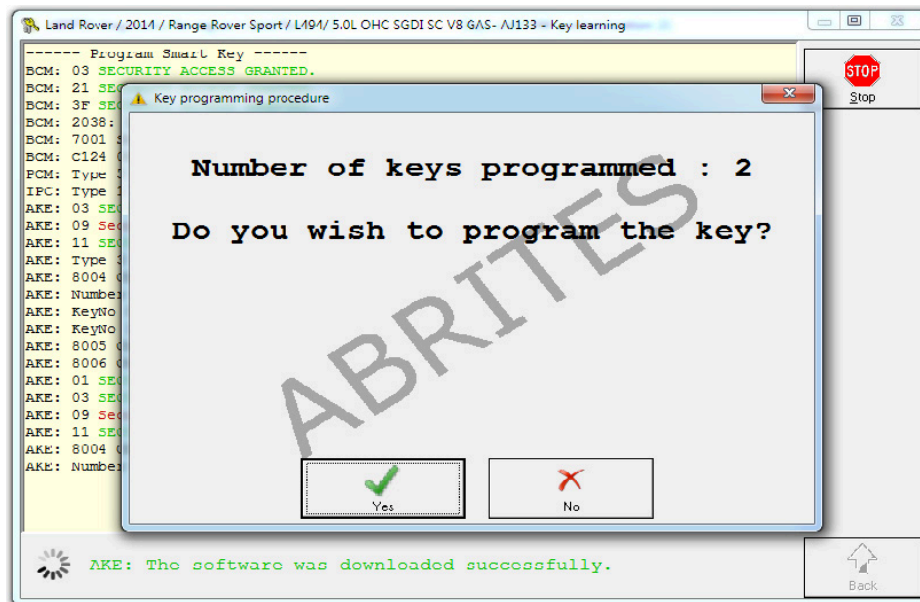




The software will perform the key calculation and provide detailed information about all the steps taken:



Once the calculation is completed the software will inform you about that and will ask you if you would like to program the key.



4.2 Key Duplicator (2018+)

The “Key Duplicator” special function is dedicated to JLR vehicles 2018+ and allows you to program keys.

The function requires a PROTAG programmer to be connected to the PC, as well as an AVDI interface and a TA54/TA56/TA66/TA67 Abrites key for JLR. TA54/TA56/TA66/TA67 are the only keys supported by the “Key Duplicator” function.

IMPORTANT:

If the vehicle is **ARMED**, you will probably need to connect to the internal CAN-H and CAN-L of the vehicle using either the CB012 Abrites cable set or a Distribution box (the software will let you know if a direct connection is required).

The internal CAN-H and CAN-L are located under the front seats or inside all 4 doors.

CAN-H --> yellow/red

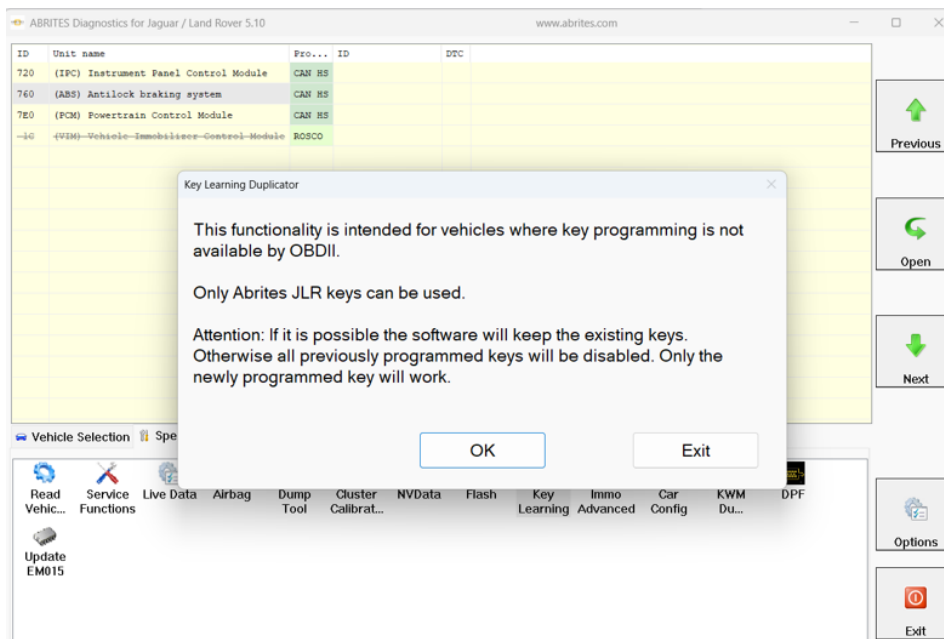
CAN-L --> yellow/brown(yellow/purple)

You can also disable the alarm using the “Alarm OFF” special function described in the dedicated section.

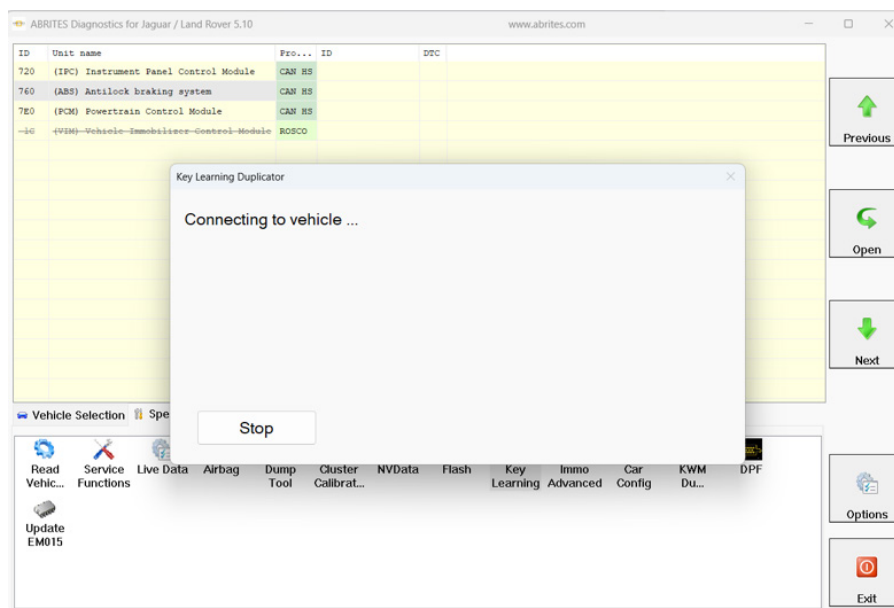
In case the vehicle is equipped with UWB, you will need to install UWB Emulator (EM015). The steps are described in the dedicated section

Procedure steps :

1. Open the “Key Duplicator” functionality



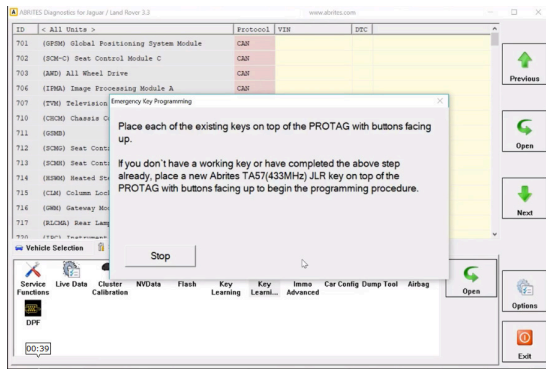
2. By pressing “OK”, the software will connect to the vehicle and read the required data from it



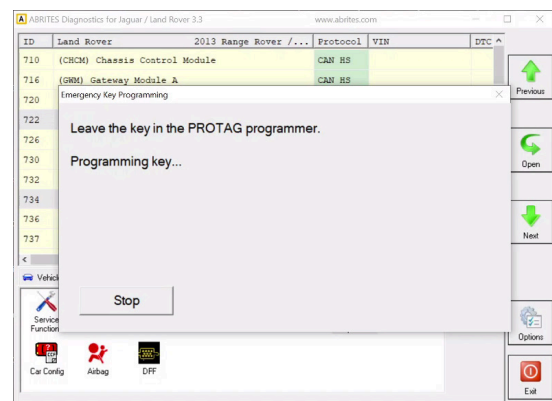
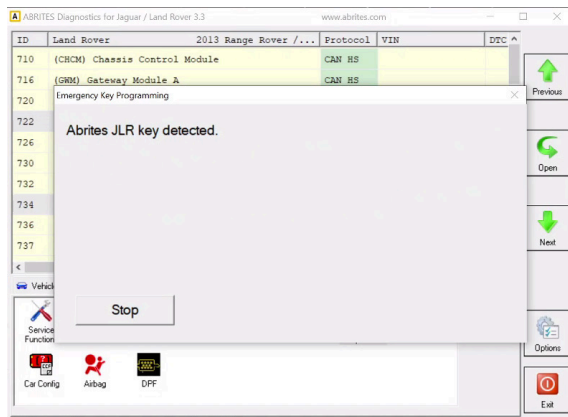
3. Connect your PROTAG programmer and place a new Abrites TA54/TA56/TA66/TA67 key
4. At this step, you must place each of the existing car keys (if available) onto your PROTAG programmer before key programming of the new keys or place a new Abrites TA54/TA56/TA57 JLR key, if it is an All Keys Lost situation.

In case you have working keys, the software will inform you if they can be saved or not.

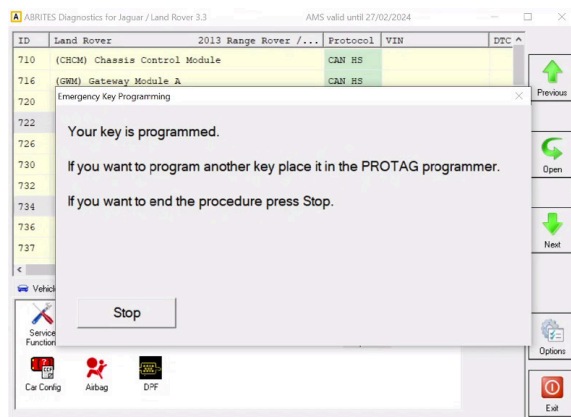
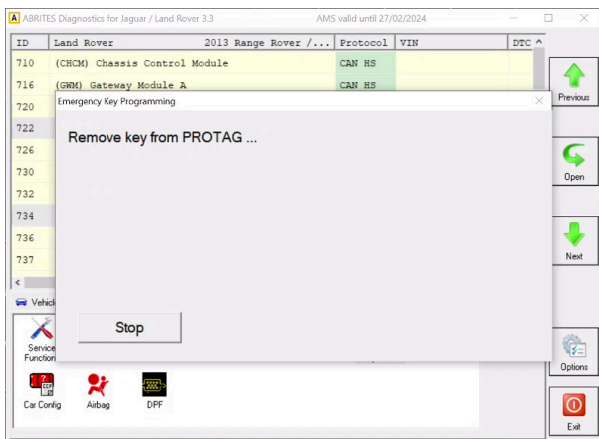
IMPORTANT: Place the keys on top of the PROTAG programmer with the buttons facing up as shown in the photo below.



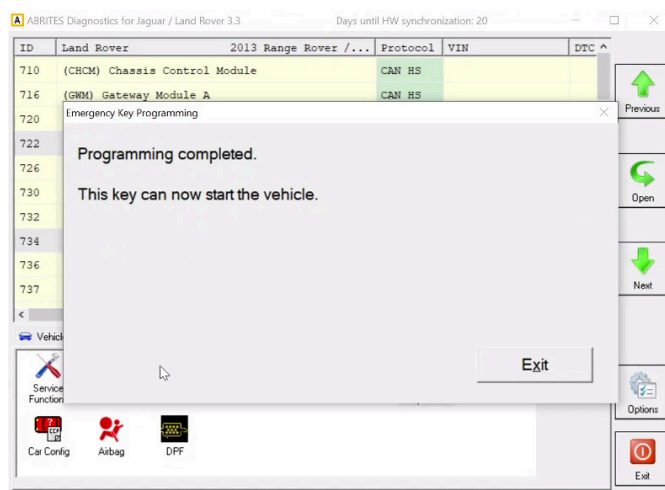
5. The software will prompt you to place a new TA54/TA56/TA66/TA67 key onto the PROTAG



6. Once ready, the software will inform you to remove the key from the PROTAG programmer and press "Stop" to finish the procedure



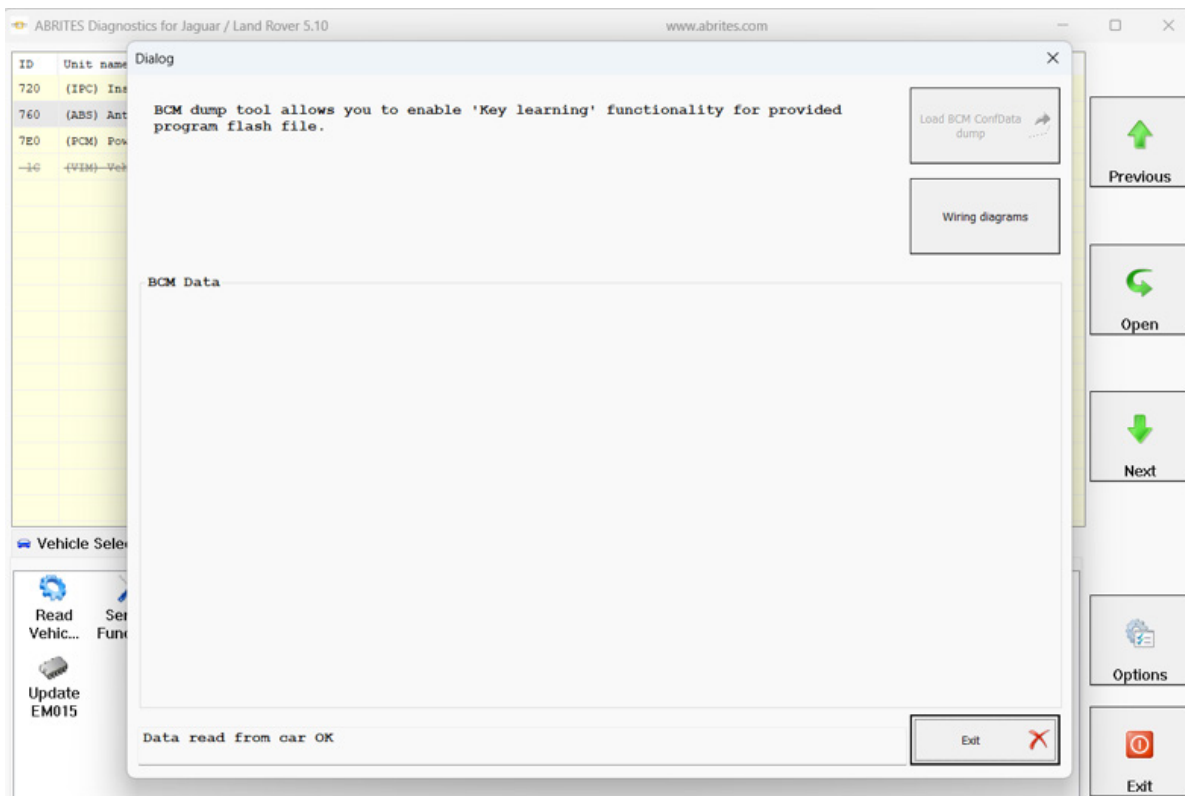
7. The new TA54/TA56/TA66/TA67 key(s) is(are) successfully programmed and ready to start the car. Try to lock and unlock the doors using the remote and start the car.



4.3 Key learning by BCM EEPROM dump (2018-2026)

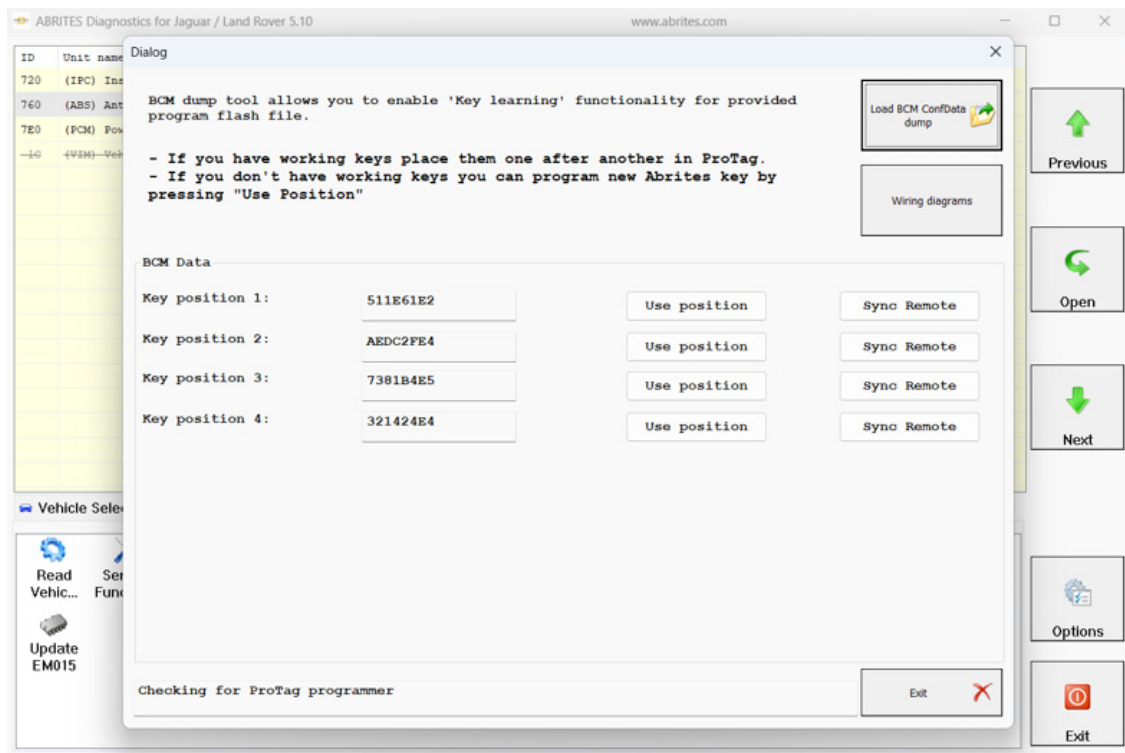
This function allows you to program keys for JLR vehicles manufactured 2018-2026 by BCM EEPROM (95128) dump even if the alarm is on. In case the vehicle is equipped with UWB , you will need to install also UWB Emulator (EM015). The steps are described in the dedicated section

Once you have read the dump, you can mount the BCM back in the vehicle and proceed via OBDII.



Procedure steps :

1. Select the “Load BCM ConfData dump” and load the read EEPROM (95128) dump.



2. Connect your PROTAG programmer and place each of the working keys (if available) onto the PROTAG, or if no working keys are available, place a new Abries key and press “Use position” of the key position on which you want to program the new key.

3. You should press the remote-control buttons several times near the PROTAG

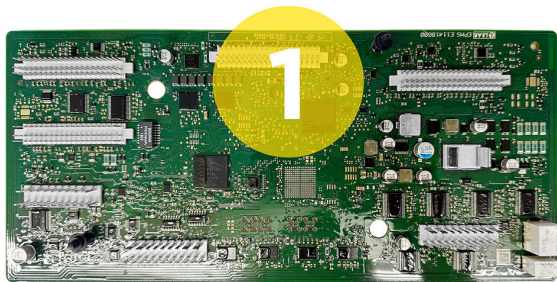
4. Place the new key onto the PROTAG, and the software will program it

5. After programming the key successfully, you should synchronize the remote control by pressing the Synch Remote button of the corresponding key position. Keep the key near the PROTAG and press the remote-control button several times.

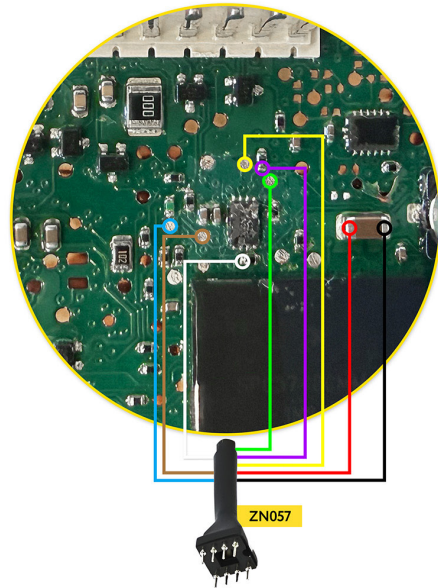
IMPORTANT: If the key is not detected by the PROTAG, please replace the battery

4.3.1 BCM EEPROM Wiring

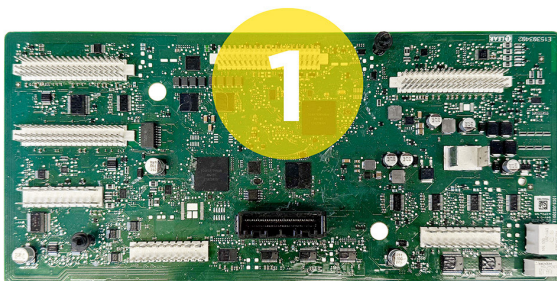
FRONT SIDE



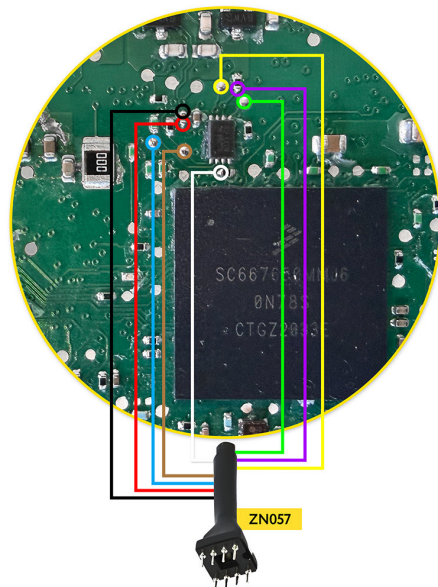
1



FRONT SIDE

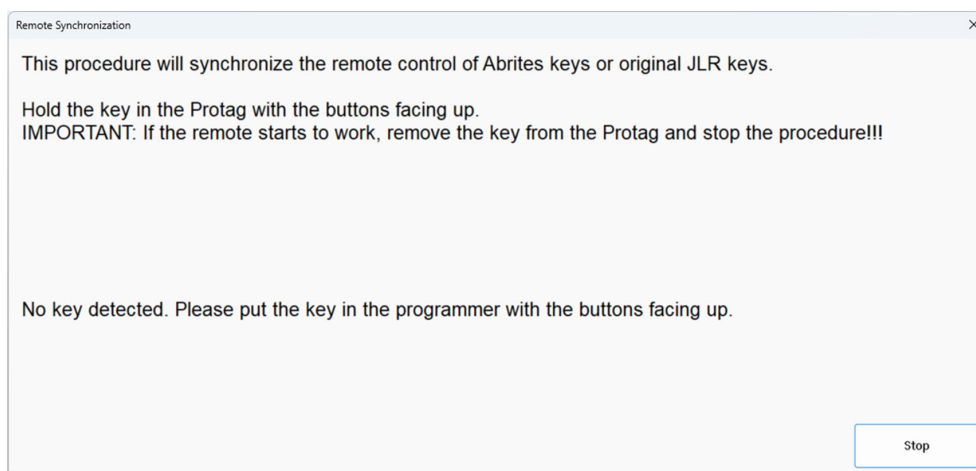


1



4.4 Remote control synchronization

This special function is used when the remote control of a newly programmed key is not working after performing a key learning procedure. You should have a PROTAG connected to your PC, then execute the procedure and put the newly programmed key into the PROTAG with the buttons facing up. If the remote starts working again, remove the key from the PROTAG and stop the procedure.



4.5 Restore used Abrites TA54/TA57/TA66/TA67 keys

This special function lets you reset an Abrites JLR key that has been programmed/locked to a vehicle so that you can use the key again.

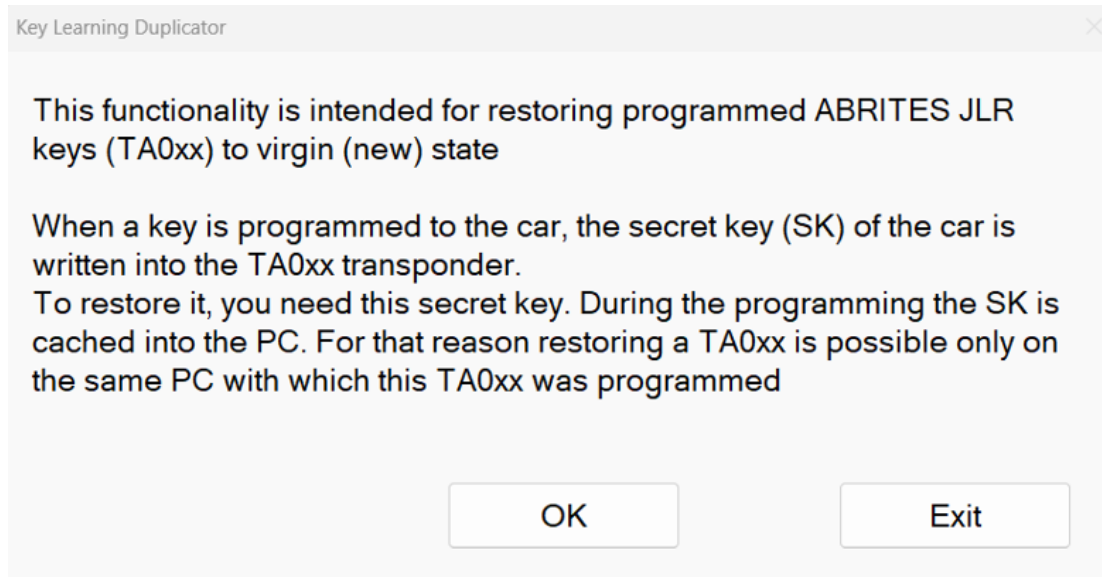
Here are the very important prerequisites for the procedure:

The key must be reset with the same AVDI and laptop that were used for the key learning procedure.

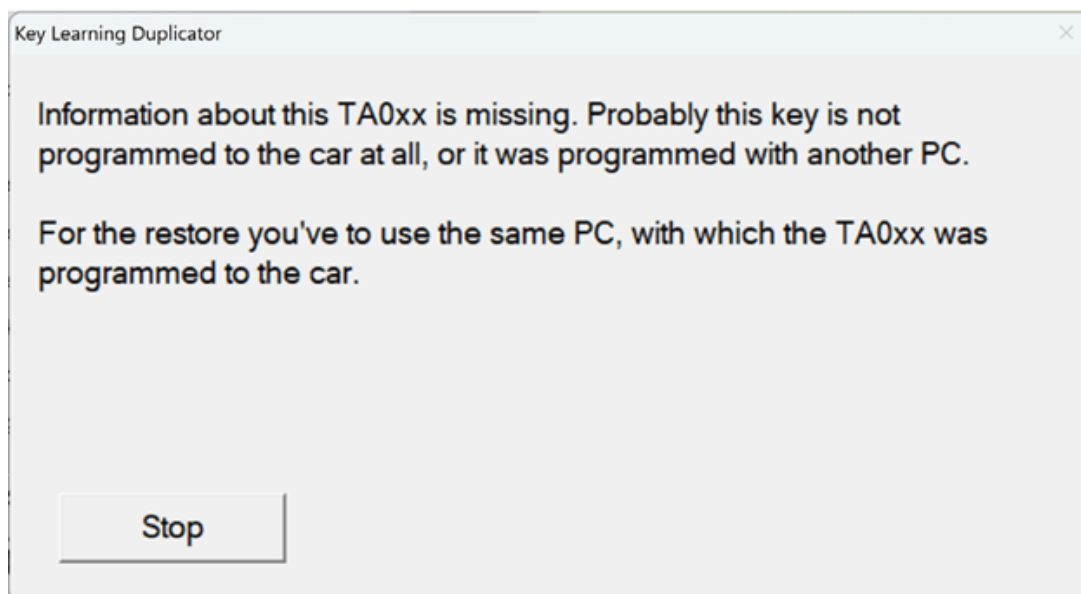
Supported keys : TA54, TA56, TA66, TA67

PROTAG programmer is required for the procedure as well.

Once you select the Abrites Key Reset from the special function menu, a screen with information will appear. The procedure is guided, and you need to follow the on-screen instructions to reset the key.



If you put a key that has not been programmed with your AVDI and laptop, or the key is not programmed at all, the software will inform you.



5. Special Function Cluster calibration

Cluster calibration is a function dedicated to the calibration of electronic units after an exchange with a used unit. Please note that the calibration needs to be done in coordination with local laws.

Vehicles supported for cluster calibration include but are not limited to:

Land Rover:

Evoque (L538) - LL and HL July 2011- 2014 (2dr and 4dr)

Range Rover Sport (L494) - 2013- 2014

Range Rover (L405) -2012 – 2014 (including long wheel base models)

Jaguar:

F-Type Convertible and Coupé 2013-2014

XF (X250) - 2007 –

2014 XJ (X351) -

2010 – 2014 XK

(X150) - 2010 – 2014

The procedure for cluster calibration should start after a diagnostic connection to the vehicle is established and the icon for it is clicked.

1. Select the Electronic Control Unit that needs to be calibrated and click “read”:



2. Input the appropriate value in the “new” window and press update:

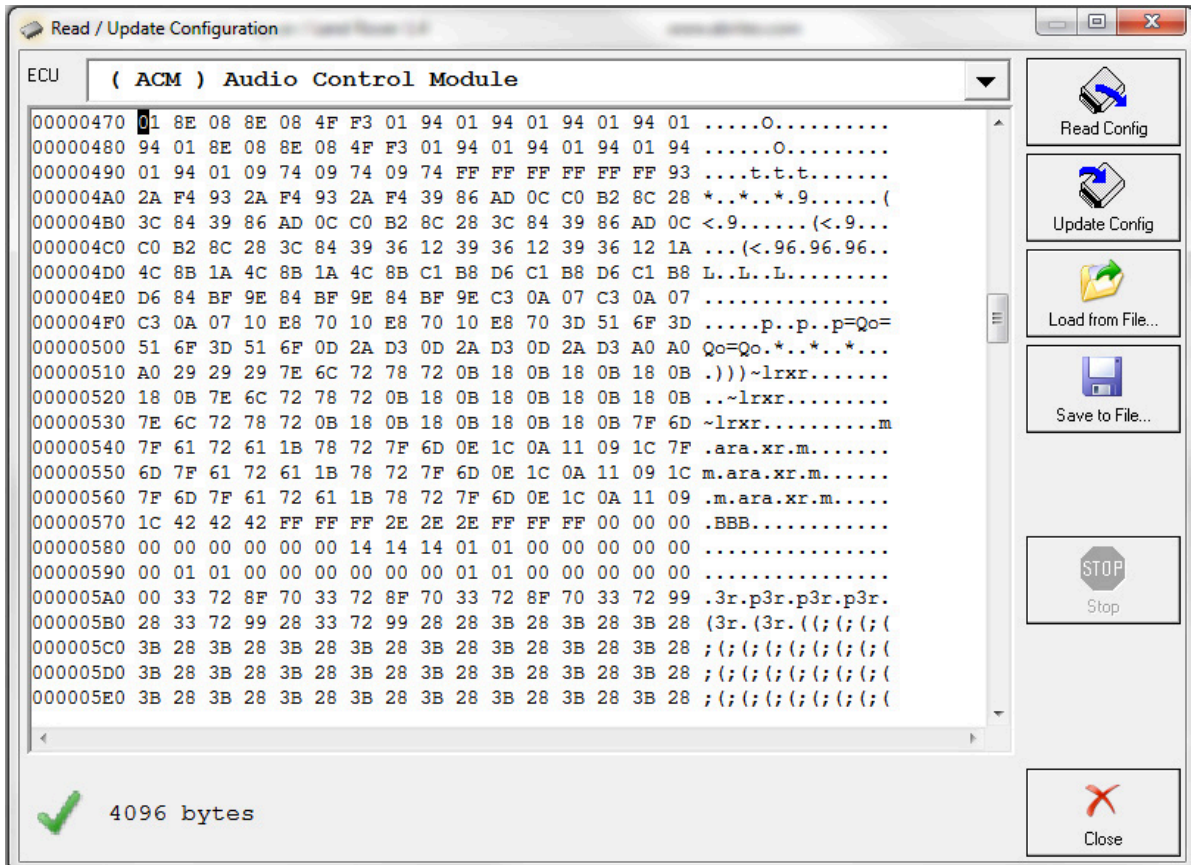


3. Confirm that the correct value is set and close the window:



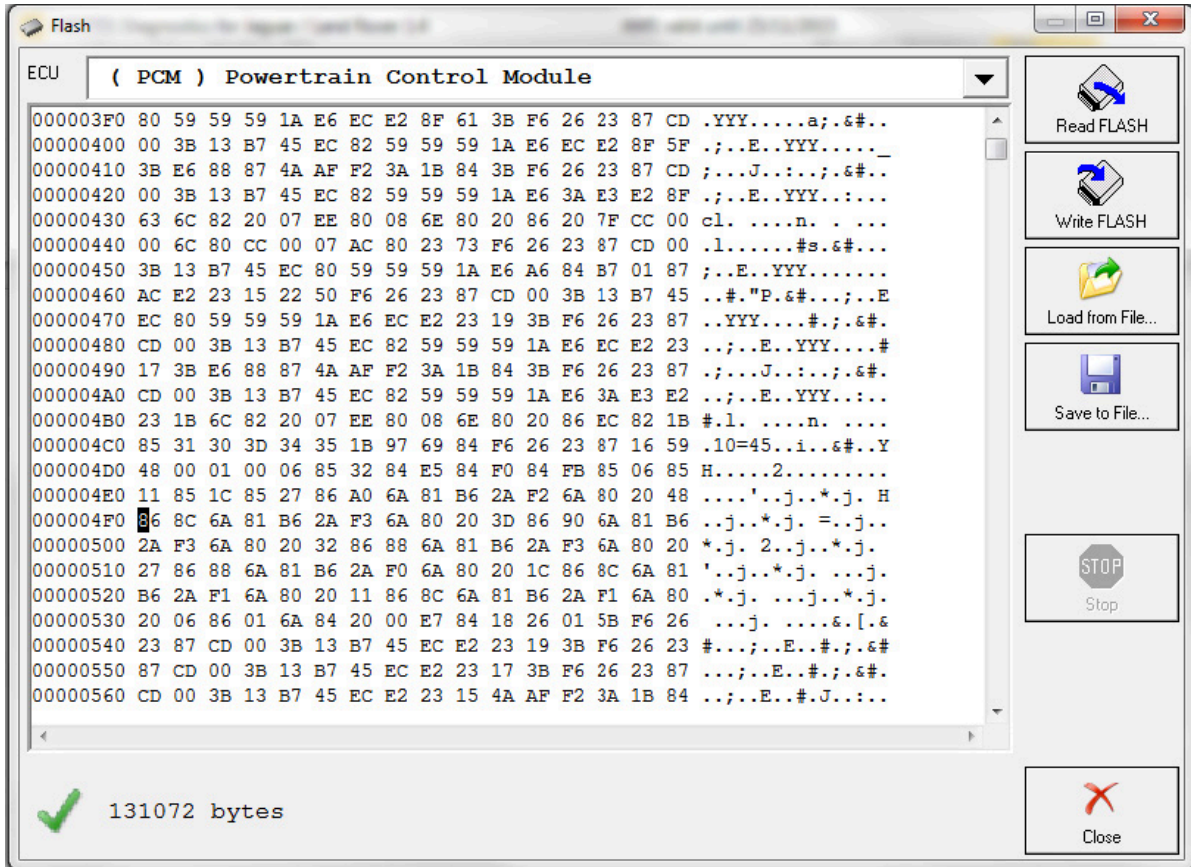
6. Special Function NV DATA

This function is used for reading, saving and updating of the Configuration data of the modules within Jaguar and Land Rover vehicles. It is particularly useful for cases where module exchange is required.



7. Special Function Flash

Special Function Flash is used in the cases where the flash file of a module within the vehicle needs to be read, saved or updated. It is used for module replacement as well as flash tuning.

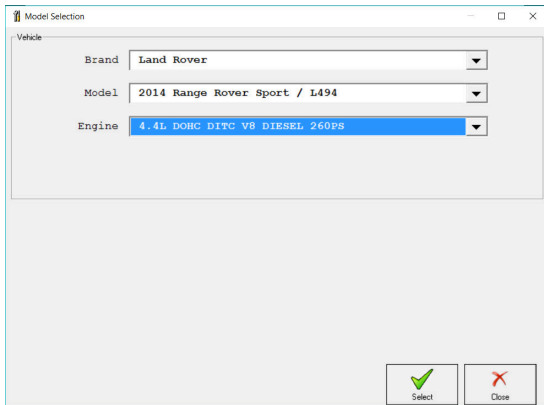


8. Special Function “Immo Advanced”

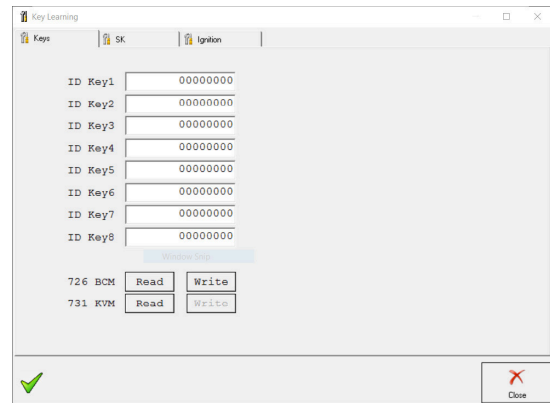
The “Immo Advanced” special function allows the user to write the transponder ID and the secret key ID in the car’s BCM.

After that you the engine can be started with a key and moved to an emergency slot. The keyless start of the engine won’t be possible. Writing in the KVM (Keyless Start Module) is also not possible. If the KVM is locked, writing by OBD won’t be possible as well.

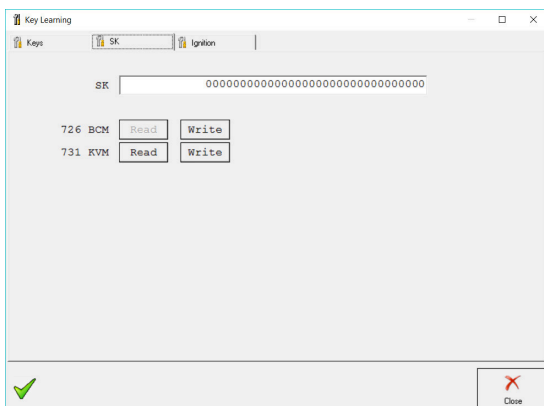
1. Select the mod



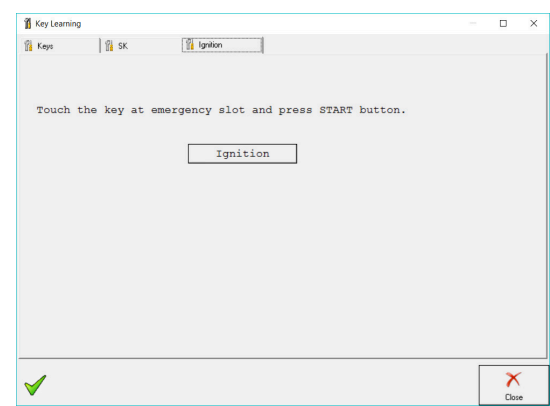
2. Keys scre



3. SK Scre



4. Ignition Scre



9. EM015 - JLR Ultra-Wide Band Emulator

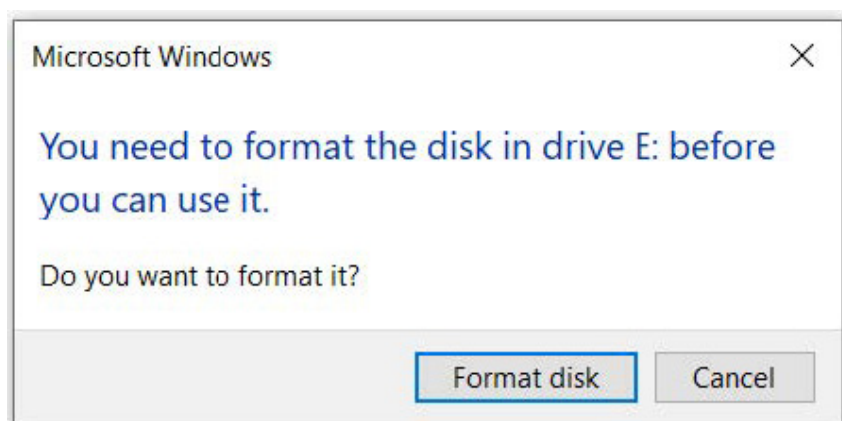


Abrites UWB Emulator connection

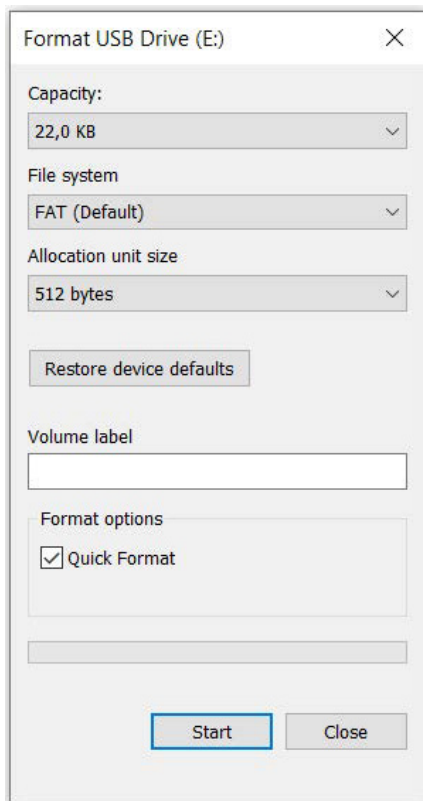
If you ever encounter a car which has a UWB module installed the key learning procedure will end successfully but you will only have a working remote for the car. This is when the UWB emulator will be of use to you. The software will lead you through the procedure. Here is what you need to do in order to complete the task.

1. Connect the emulator to your PC using a random old USB cable which fits the emulator(Micro-USB), format the emulator once you connect it, the format box should pop up immediately after being connected.

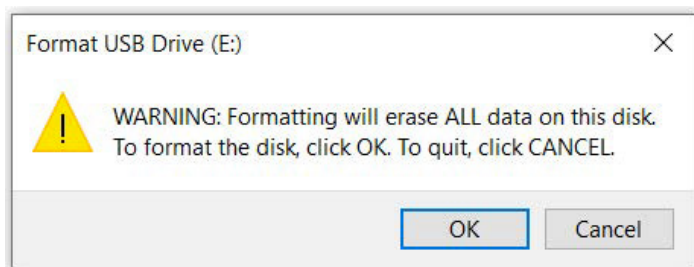
1.1 Formatting the emulator prompt



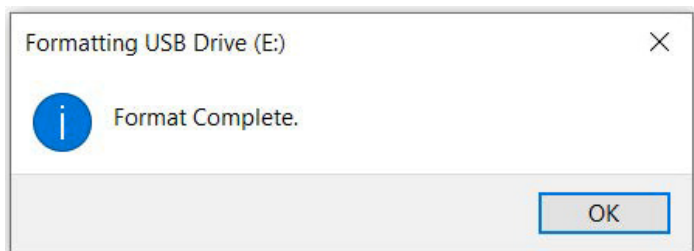
1.2 Quick Format settings



1.3 The warning can be ignored

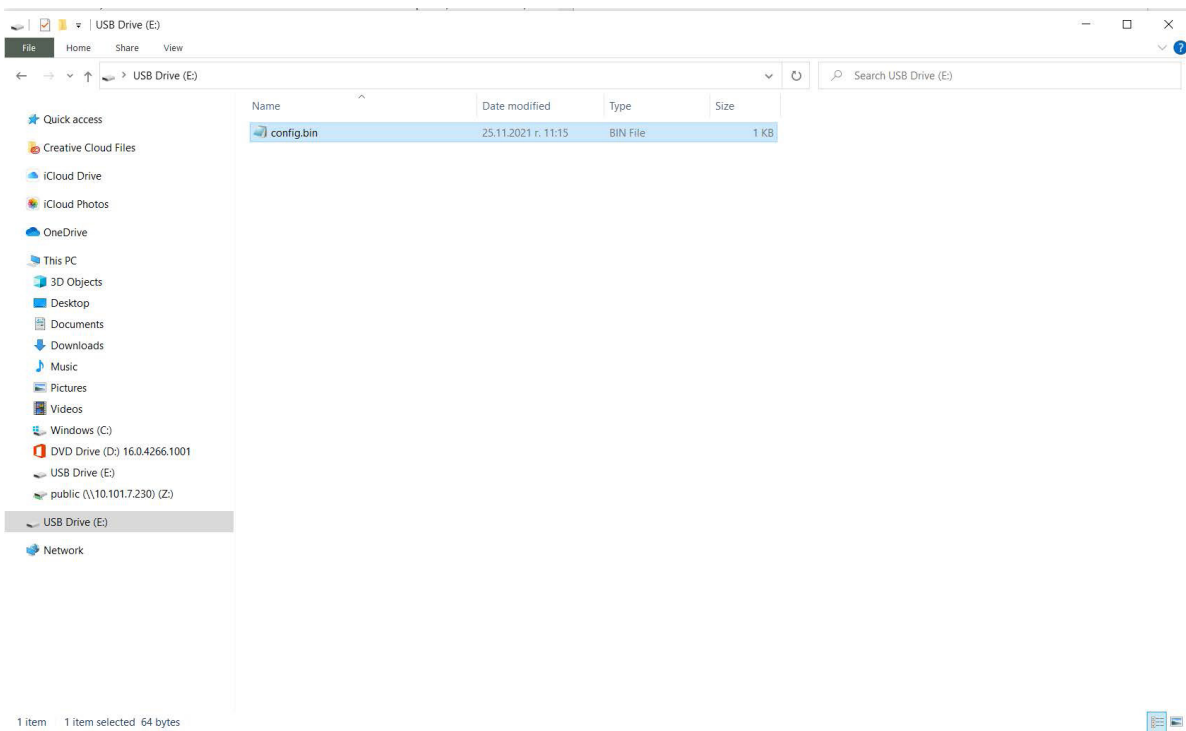


1.4 The format is complete



2. Go to the log folder of JLR where you have the config file. Copy and paste this file onto the emulator by accessing it just like accessing any regular USB-flash drive. After pasting the config file, the emulator will be automatically disconnected and re-connected to the PC, asking to be formatted. No further formatting is required and the EM015 can be installed in the car.

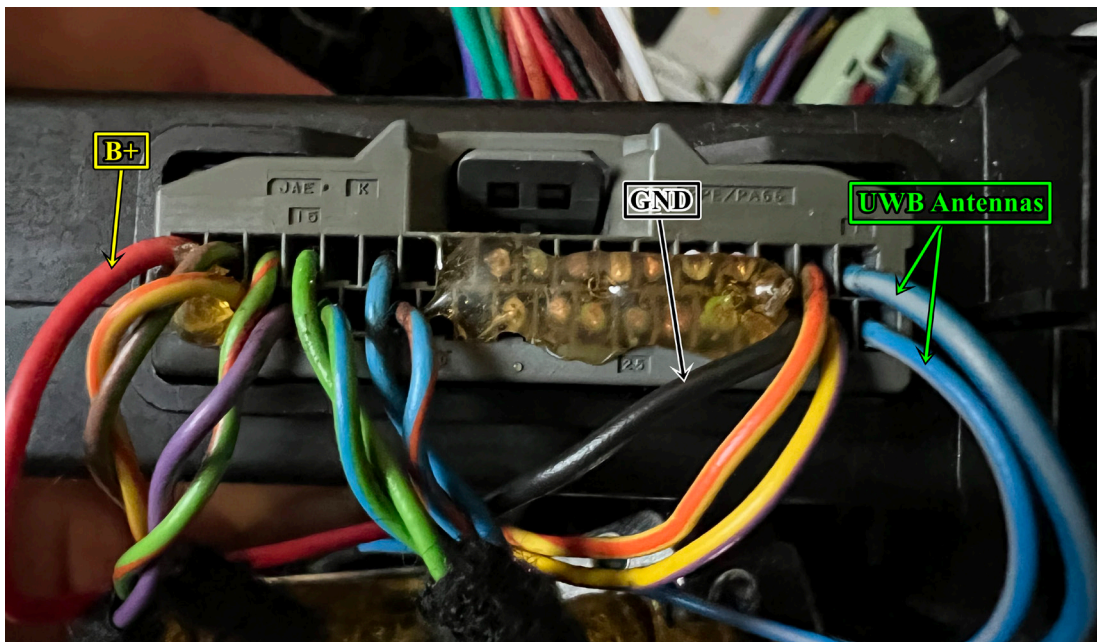
2.1 The config file pasted onto the emulator



3. Connect the B+(yellow) and GND(black) of the EM015 emulator to the B+(red) and GND(black) cables of the KVM connector, the LED on the EM015 lights up in RED:

Yellow (EM015) -> Red (KVM)

Black (EM015) -> Black (KVM)



4. Cut **any one** of the blue cables(UWB antennas cables) and connect the green cable of the EM015 emulator to **the blue cable end which goes to the UWB antenna**

Green(EM015) -> Blue (UWB antenna side)

5. The LED of the EMULATOR goes from RED to GREEN.

6. Once the LED turns GREEN, disconnect the green cable of the EM015 from **the blue cable end which goes to the UWB antenna**.

7. Connect the green cable of the EM015 emulator to **the blue cable end which goes to the KVM module** (switch from UWB antenna side to KVM side).

Green(EM015) -> Blue (KVM side)

In this case the emulator replaces one of the UWB antennas as one of the original antennas remains disconnected (one of the blue cables remains cut and can be isolated on the UWB side).

9.1 EM015 - Ultra-Wide Band Emulator update procedure

In order to update the EM015 UWB Emulator the Abrites Diagnostics for JLR must be opened and the “EMUL update” icon selected. This option automatically saves two files in the LOGS folder (you can find it in the last page of the Abrites Quick Start menu).

Then perform the following steps:

1. Connect the emulator via micro USB to PC > Format > OK > Close > Drag and drop the 1st file “config-gotoboot.bin” from logs folder to the emulator’s memory folder.
2. Disconnect the emulator > reconnect it > Format > OK > Close > Drag and drop the 2nd file “Application_2.X.bin” from the logs folder to the emulator’s memory folder.
3. Disconnect the emulator > reconnect it > Format > OK > Close > Drag and drop the configuration file “UWB_Emulator_XXXXXXXX-XXXXXX.bin” which is saved automatically during the key programming procedure from logs folder to the emulator’s memory folder.

10. Dump tool

Since our November 2021 update we implemented the use of the dump tool where key programming is possible by dump. You can use the Dump Tool in cases where you need (or want) to program OEM keys and:

The car you have is equipped with one of the following KVM types: FK72, DPLA, HPLA

The Program flash of the KVM module can be read with a programmer and a dump can be generated

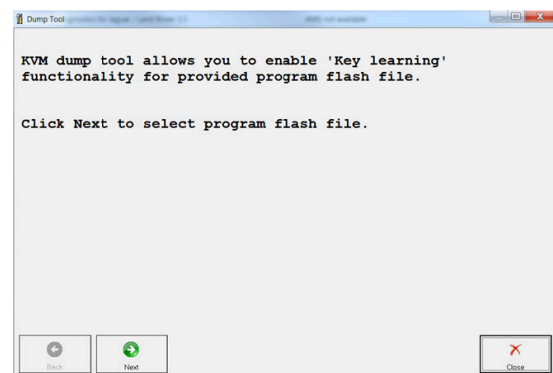
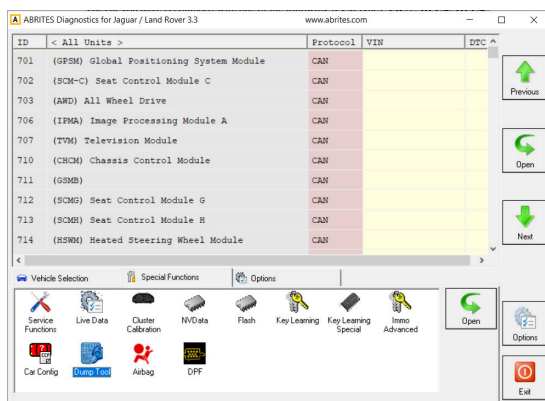
Here are the steps you need to follow in order to operate the Abrites Diagnostics for JLR dump tool:

1. Read the KVM Program flash using a capable programmer and save the dump file (e.g. dump.bin)
2. Modify e.g. dump.bin using “dump tool” and save it (e.g. dump_modified.bin).
3. Write e.g. dump_modified.bin into the KVM using a programmer.
4. Program and delete keys using the standard procedure.

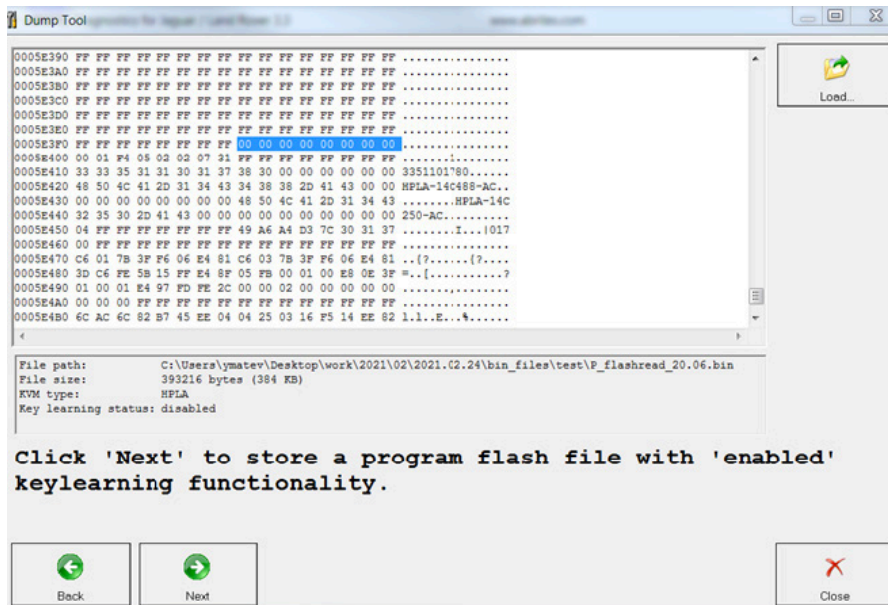
The modifications will be done automatically and all you need to do is load the dump, instruct the dump tool to prepare the file and save it when ready.

Here is what it looks like:

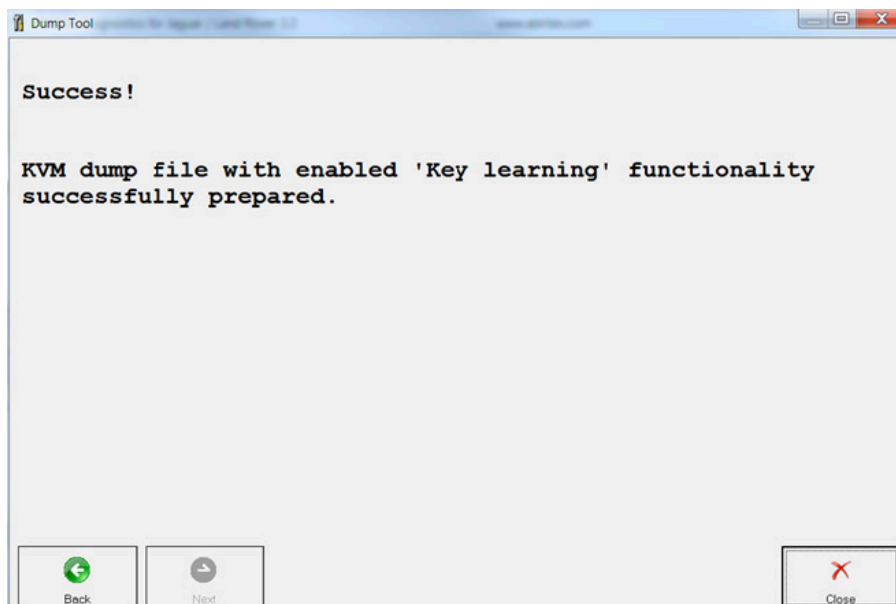
1. Open the Dump tool and load the flash file



2. Once the file is selected and loaded we can click “next”



3. Then we can save the generated dump file:



11. KP002 JLR Alarm Unblock Device

KP002 is a tool used to help in key programming procedures, when all keys are lost, for JLR vehicles 2020+

It can be used by OBDII or on bench to unlock the vehicle's BCM module, making the learning of new keys possible .

Main functionalities:

Unlocking the BCM module

Supported vehicles:

JLR models 2020+

Supported BCM modules (include, but are not limited to):

L8B2-14F041-AF (Defender 2020)

JPLA-14F041-BG (Evoque 2019)

In order to perform these procedures, you will need the JL006 license.

The procedure may take up to 72 hours.

An AVDI and active AMS are required to complete the process.

The set includes a device with 2 CAN wires, and additional bench connection cable set



11.1 KP002 by OBDII in the vehicle

When working in the vehicle, you need to plug the device into the OBDII port and use the needle clips to connect to the RFA CAN wires of the vehicle. Vehicle will need power supply.

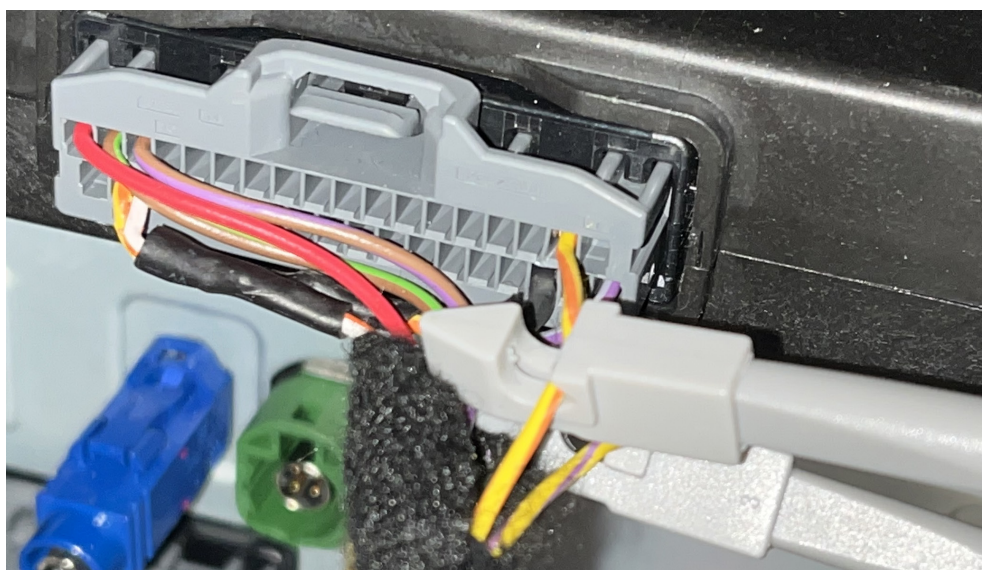
Steps:

- Connect the CAN clips coming out of the device to the internal CAN (RFA) wires (under the driver's seat)
- Plug the device into the OBDII port
- At this point the LED indicator will blink in orange 1 time and it will start fast green light blinking. If all the connections are alright, the LED indicator will start blinking in green slowly, meaning the device is now in operation.
- At the end of the procedure, the device should have solid green light on the LED indicator.
- Now the vehicle's alarm is deactivated and it is ready for the key programming procedure.

*Procedure may take up to 72 hours.

Below you can see an example of connection to the RFA CAN wires under the driver's seat of a Defender 2021

CAN HI (Red wire from device) - connected to the yellow/orange wire
CAN LO (Blue wire from device) - connected to the yellow/purple wire



11.2 KP002 on bench

When working on bench, you need to connect to the pins of the BCM unit, using the additional cable for bench work from the KP002 set as follows:

- Connect the OBD connector of the cable to the OBD connector of the device
- Connect the 2 wires (CAN) coming out of the device into the extendor cables that would allow connection to the pins.
- Connect all pins to the BCM unit
- Power up the whole set (ZN063 power adapter can be used)

Bench Connector Legend:

- Male OBDII Port
- Black power cable with a socket (can be used with ZN036)
- Yellow wire (with a split) - 12V+
- Black - GND
- Blue - CAN H
- Red - CAN L
- additionally, the 2 wires coming out of device are also Red for CAN H and Blue for CAN L and are used to connect to the RFA CAN pin connectors.

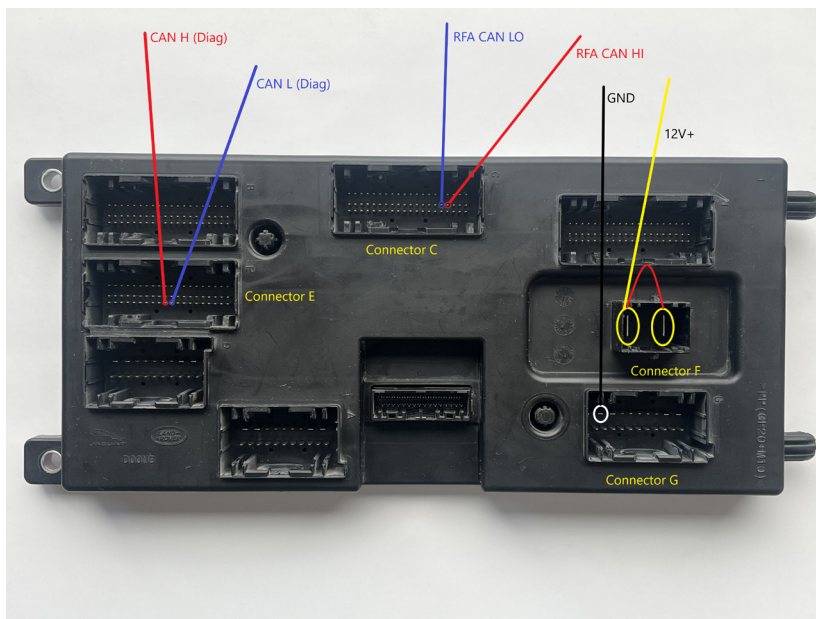
Once everything is connected properly the procedure goes as follows:

- Power up the whole set
- At this point the LED indicator will blink in orange 1 time and it will start fast green light blinking. If all the connections are alright, the LED indicator will start blinking in green slowly, meaning the device is now in operation.
- At the end of the procedure, the device should have solid green light on the LED indicator.
- Now the vehicle's alarm is deactivated and it is ready for the key programming procedure.

*Procedure may take up to 72 hours

KP002 bench connections:

1. L8B2 BCM



Legend:

Connector F:

PIN 2 - 12V+

PIN 1 - additional 12V+ cabl

Connector G

PIN 1 - GND

Connector C: RFA CAN

PIN 36 - CAN L - Blue Wire (comming out of the device)

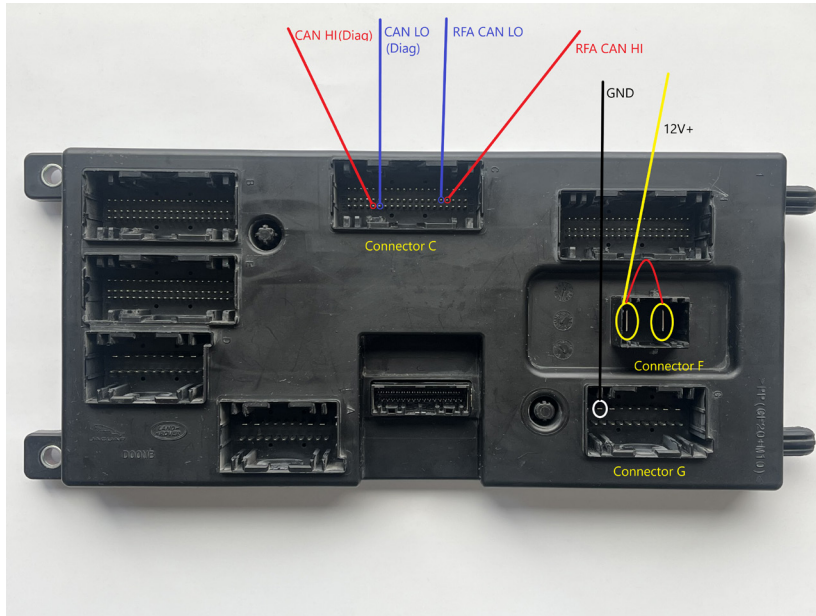
PIN 37 - CAN H - Red Wire (comming out of the device)

Connector E: Diag CAN

PIN 51 - CAN L - Blue Wire

PIN 50 - CAN H - Red Wire

2. JPLA BCM



Legend:

Connector F:

PIN 2 - 12V+

PIN 1 - additional 12V+ cable

Connector G

PIN 1 - GND

Connector C: RFA CAN

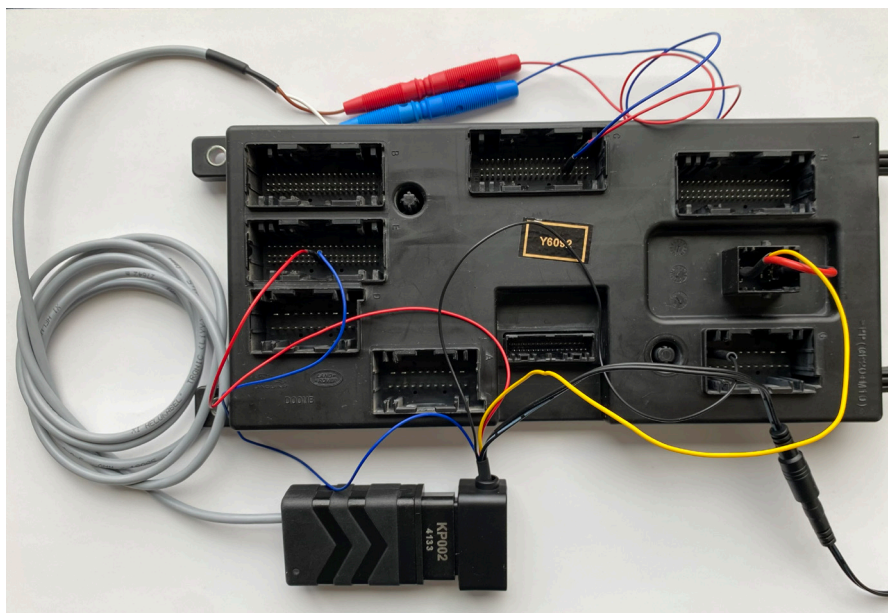
PIN 36 - CAN L - Blue Wire (coming out of the device)

PIN 37 - CAN H - Red Wire (coming out of the device)

PIN 50 - CAN H - Red Wire

PIN 51 - CAN L - Blue Wire Legend

Below you can see an example of a **L8B2** BCM connected on bench.



Operation of the device:

There is a LED indicator on the device, which provides information of the state of the device/procedure:

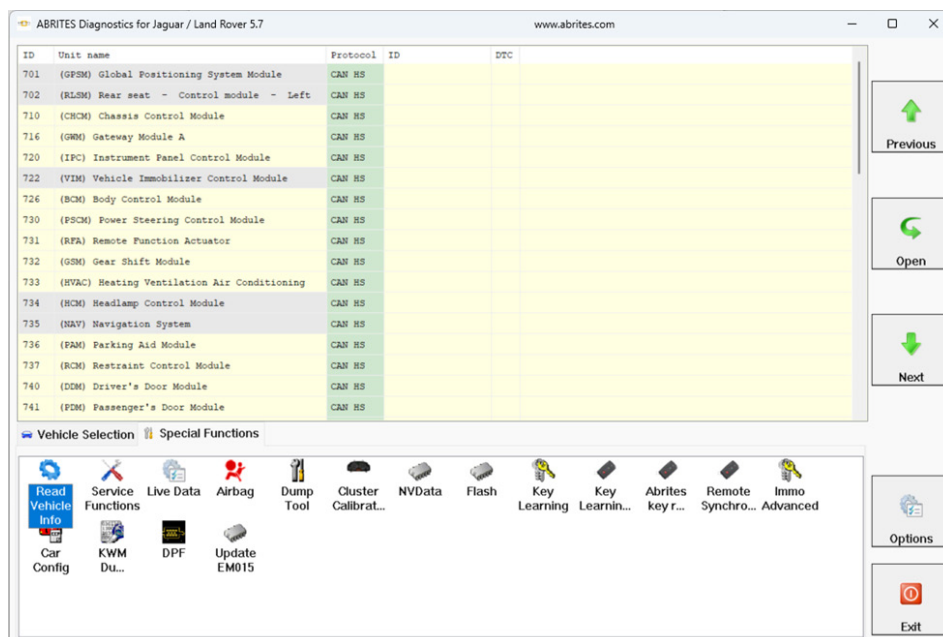
- Fast Green blinking - testing the connections
- Alternating Green and Red blinking - wrong connection of the CAN wires.
- Slow Green blinking - work in progress
- Solid Green light - process finished
- Solid Red light - does not operate - this would most probably mean you have not made the correct connections

12. Special Function “Read Vehicle Info”

This special function reads all the required information from the vehicle before executing a specific procedure. In the “Read Vehicle Info” special function, you will be able to execute the following functionalities:

- Rolling code Synchronization,
- Replace RFA,
- Add new key,
- Clear keys,
- Remote control synchronization,
- Alarm OFF.

More information about each of the previously mentioned functionalities can be found in the dedicated sections below.



Once you click the “Read Info” button, the software will read the information from the RFA, BCM, and GWM modules. The retrieved data includes the vehicle type, platform and equipment, VINs, whether a UWB module is present, whether the RFA is locked, the number of learned keys, and other related information required to perform any of the supported procedures.

The screenshot shows a software window titled "Read vehicle Info" with a close button (X) in the top right corner. The window is divided into two main sections: a data table on the left and a control panel on the right.

Type	Description
VIN	SALZA2AT5TH296253
Brand	Land Rover
Model	New Range Rover Evoque / L551
Year	2026
Engine	1.5L Petrol PHEV
BodyStyle	5 door
Drive	RHD
Transmission	8-Speed Automatic
<hr/>	
RFA	
RFA VIN	SALZA2AT5TH296253
RFA Broadcast VIN	
RFA Part No.	M9R3-14C250-BE
RFA Delivery Assembly number	M9R3-19H440-BE
RFA Software Version	LBB2-14C104-AY
RFA Calibration Data	KBD2-14C105-EG
RFA Signal configuration	LBB2-14C430-AE
RFA locked	Yes
RFA UWB status	Enabled
RFA Learned keys count	2
RFA Learned keys ids	CAB1BDEB; 9624FFEC;
<hr/>	
BCM	
BCM VIN	SALZA2AT5TH296253
BCM Broadcast VIN	SALZA2AT5TH296253
BCM Part No.	SBE2-14C256-AA
BCM Delivery Assembly number	SBE2-14F041-AA
BCM Software Version	LBB2-14C184-AAG
BCM Calibration Data	RBD2-14C185-AD
BCM Signal configuration	LBB2-14C408-AAC
BCM Learned keys count	2
BCM Learned keys ids	CAB1BDEB; 9624FFEC;
<hr/>	
GWM	
GWM VIN	
GWM Broadcast VIN	SALZA2AT5TH296253
GWM Part No.	SBE2-14C256-AA
GWM Delivery Assembly number	SBE2-14F041-AA
GWM Software Version	SBE2-14F530-AA
GWM Calibration Data	SBE2-14F531-AA
GWM Signal configuration	
UWB configuration status	Enabled
Remote frequency	434 Mhz

On the right side of the window, there is a vertical stack of buttons: "Read info", "Rolling Code Synchronization", "Replace RFA", "Add new key", "Clear keys", "Remote control synchronization", and "Alarm OFF". At the bottom right, there is an "Exit" button.

At the bottom left of the window, a status bar displays the text: "Reading Gateway data finished."

12.1 Rolling code synchronization

This special function will synchronize the RFA (KVM) module with all door modules and the BCM. It is helpful when you have replaced the RFA (KVM) module of the car or when one or more door modules have been replaced, and the remote control no longer works. By performing the rolling code synchronization, the remote control will start working again.

12.2 Replace RFA

This special function is used when you need to replace the RFA module of the vehicle. Please note that only UNLOCKED RFA (with unlocked MCU) modules are supported, either brand-new, second-hand, or a module with a replaced MCU. The Replace RFA functionality will synchronize the immobilizer system of the vehicle in one click.

Important: After replacing the RFA module successfully, new keys must be programmed for the vehicle.

12.3 Add new key

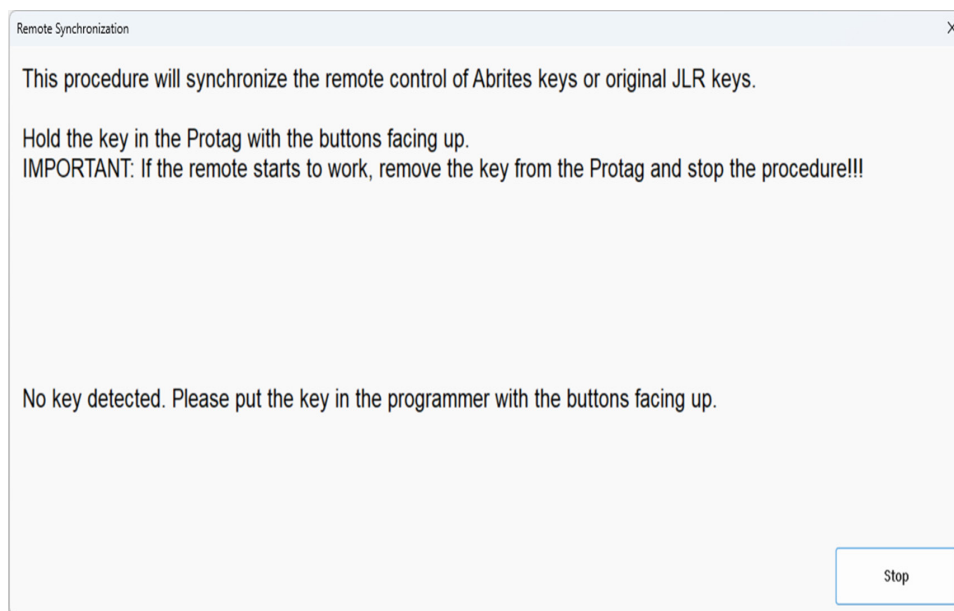
The "Add new key" special function allows programming a spare key for the vehicle equipped with an unlocked RFA module, and you should also have your PROTAG connected to the PC. The software will prompt you to place each of the keys you want to program onto the PROTAG with the buttons facing up. Either Abrites TA66/TA67 or original keys can be used.

12.4 Clear keys

This special function will clear the already programmed keys for the vehicle in one click.

12.5 Remote control synchronization

This special function is used when the remote control of a newly programmed key is not working after performing a key learning procedure. You should have a PROTAG connected to your PC , then execute the procedure and put the newly programmed key into the PROTAG with the buttons facing up. If the remote starts working again, remove the key from the PROTAG and stop the procedure.



12.6 Alarm OFF

The "Alarm OFF" functionality is very helpful in all keys lost situation when programming a new key for a vehicle manufactured 2014-2024 , equipped with a locked BCM module, is not possible. This special function turns off the vehicle's alarm and unlocks the BCM module, allowing you to perform the key programming procedure afterwards.

When performing the procedure, you need to connect the AVDI to the vehicle's OBDII port , and use the needle clips to connect to the RFA CAN-BUS wires.

Important : A power supply should be connected to the car's battery.

An example of a connection to the RFA CAN wires under the driver's seat of a Defender 2021:

CAN-H (Red wire from device) - connected to the yellow/orange wire

CAN-L (Blue wire from device) - connected to the yellow/purple wire

N.B: On some models, the colours of the CAN-BUS wires might be different:

CAN-H - green

CAN-L - brown

