



ABRITES DIAGNOSTICS AVDI COMMON

User manual
version 3.6



Important notes

The Abrites software and hardware products are developed, designed and manufactured by Abrites Ltd. During the production process we comply to all safety and quality regulations and standards, aiming at highest production quality. The Abrites hardware and software products are designed to build a coherent ecosystem, which effectively solves a wide range of vehicle-related tasks, such as:

- Diagnostic scanning;
- Key programming;
- Module replacement,
- ECU programming;
- Configuration and coding.

All software and hardware products by Abrites Ltd. are copyrighted. Permission is granted to copy Abrites software files for your own back-up purposes only. Should you wish to copy this manual or parts of it, you are granted permission only in case it is used with Abrites products, has "Abrites Ltd." written on all copies, and is used for actions that comply to respective local law and regulations.

Warranty

You, as a purchaser of Abrites hardware products, are entitled of a two-year warranty. If the hardware product you have purchased has been properly connected, and used according to its respective instructions, it should function correctly. In case the product does not function as expected, you are able to claim warranty within the stated terms. Abrites Ltd. is entitled to require evidence of the defect or malfunction, upon which the decision to repair or substitute the product shall be made.

There are certain conditions, upon which the warranty cannot be applied. The warranty shall not apply to damages and defects caused by natural disaster, misuse, improper use, unusual use, negligence, failure to observe the instructions for use issued by Abrites, modifications of the device, repair works performed by unauthorized persons. For example, when the damage of the hardware has occurred due to incompatible electricity supply, mechanical or water damage, as well as fire, flood or thunder storm, the warranty does not apply.

Each warranty claim is inspected individually by our team and the decision is based upon thorough case consideration.

Read the full hardware warranty terms on our [website](#).

Copyright information

Copyright:

All material herein is Copyrighted ©2005-2021 Abrites, Ltd.
Abrites software, hardware, and firmware are also copyrighted
Users are given permission to copy any part of this manual provided that the copy is used with Abrites products and the “Copyright © Abrites, Ltd.” statement remains on all copies
“Abrites” as used in this manual synonymous with “Abrites, Ltd.” And all it’s affiliates
The “Abrites” logo is a registered trademark of Abrites, Ltd.

Notices:

The information contained in this document is subject to change without prior notice. Abrites shall not be held liable for technical/editorial errors, or omissions herein.
Warranties for Abrites products and services are set forth in the express written warranty statements accompanying the product. Nothing herein should be construed as constituting any additional warranty.
Abrites assumes no responsibility for any damage resulting from the use, misuse, or negligent use of the hardware or any software application.

Safety information

The Abrites products are to be used by trained and experienced users in diagnostics and reprogramming of vehicles and equipment. The user is assumed to have a good understanding of vehicle electronic systems, as well as potential hazards while working around vehicles. There are numerous safety situations that cannot be foreseen, thus we recommend that the user read and follow all safety messages in the available manual, on all equipment they use, including vehicle manuals, as well as internal shop documents and operating procedures.

Some important points:

Block all wheels of the vehicle when testing. Be cautious when working around electricity.

Do not ignore the risk of shock from vehicle and building-level voltages.

Do not smoke, or allow sparks/flame near any part of the vehicle fuel system or batteries.

Always work in an adequately ventilated area, vehicle exhaust fumes should be directed towards the exit of the shop.

Do not use this product where fuel, fuel vapours, or other combustibles could ignite.

In case any technical difficulties occur, please contact the

Abrites Support Team by email at support@abrites.com.

Table of contents

1. Introduction

1.1 Scope of the manual

1.2 System requirements

1.3 Your AVDI package

2. Getting Started

2.1 Software installation steps

3. Quick Start

3.1 Interface preparation and connection to the PC

4. Using AVDI with a virtual machine (VM)

4.1 Install AVDI software on the VM

4.2 Connect AVDI to the VM

4.3 Shut down the VM

4.4 Set latency timer

4.5 Working with J1850 adapter

5. TROUBLESHOOTING

6. Additional cables and products

7. License viewer

8. Functionalities of the Basic AVDI software package

1. Introduction

Congratulations on choosing our product!

AVDI will allow you to use your Windows based PC as a powerful diagnostic tool for cars, trucks, bikes, marine equipment and recreational products. AVDI is an interface produced by Abrites Ltd. intended for interface between a PC and electronic control units. AVDI should be used with ABRITES software produced by Abrites Ltd. ABRITES is a trade mark of Abrites Ltd.

1.1 Scope of the manual

This document describes the software and hardware installation of your AVDI diagnostics interface. The document is applicable for the interfaces numbered 17xxxx (or 16xxxx) where xxxx is a hexadecimal number between 0000 and FFFF.

1.2 System requirements

Minimum system requirements – Windows 7 SP1 + 2GB RAM (recommended 4GB).

1.3 Your AVDI package

The basic package of AVDI interface contains:

1. Abrites Vehicle Diagnostics Interface



2. AVDI OBDII cable (SAE J1962)

Used to connect the AVDI to the vehicle



3. USB cable with extra power

Used to connect the AVDI to the PC



2. Getting Started

Software for your AVDI interface can be delivered by email. Please make sure that you follow the steps described below.

Software is represented by windows executable files named.

1. "SetupInterface_17xxxx.exe"
(or 16xxxx.exe)



SetupInterface_1
7xxxx.exe



SetupInterface_C
ommon.exe

2. "SetupInterface_Common.exe"
and three more downloadable
parts of the common file:
"SetupInterface_Common-1.bin"
"SetupInterface_Common-2.bin"

3. "SetupInterface_17xxxx_
PASSTHRU.exe" (or 16xxxx)
where 17xxxx (or 16xxxx) is your
interface identification number

2.1 Software installation steps

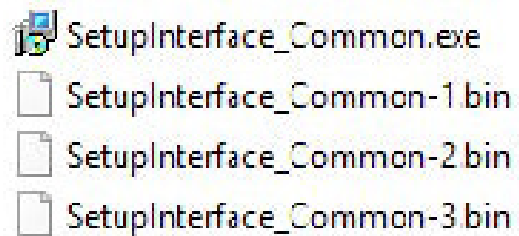
Please follow the bellow given instructions when installing the software for your AVDI interface.

Important! All executable files (.exe) mentioned above must be executed consequently(1,2,3) for the installation to be complete.

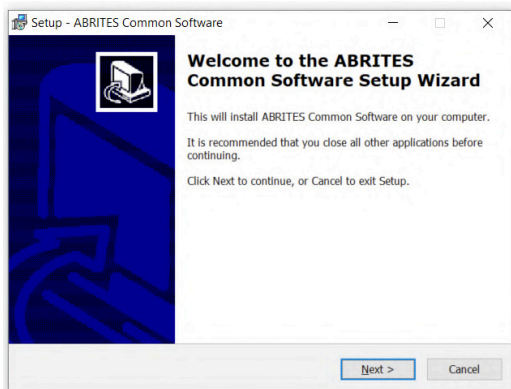
Otherwise the software might not function as expected!

Step 1. Download all the parts of the common setup files in one folder.

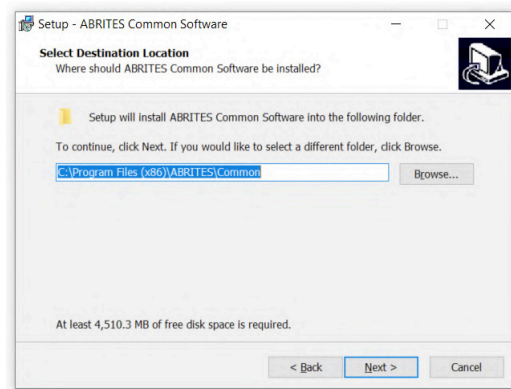
Start the executable file “SetupInterface_Common.exe” and follow the onscreen instructions.



IMPORTANT! Make sure that they are all downloaded in the SAME folder and their names are EXACTLY as they are named on the image above. If you have “SetupInterface_Common-1 (1) or (2)”, as Windows would name them if you have two files with the same name, the installation WILL NOT be completed.

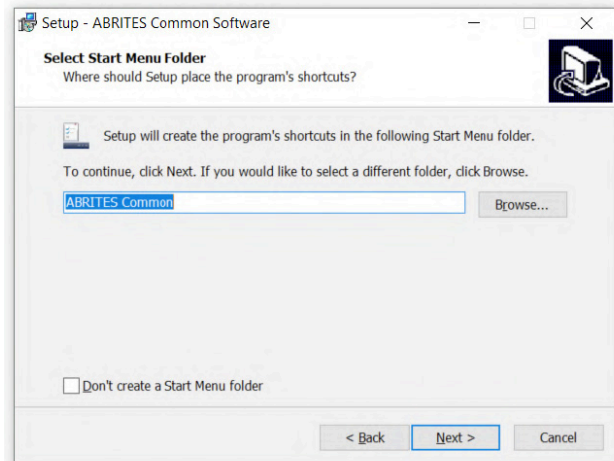


Press the “Next” button to proceed with the installation.

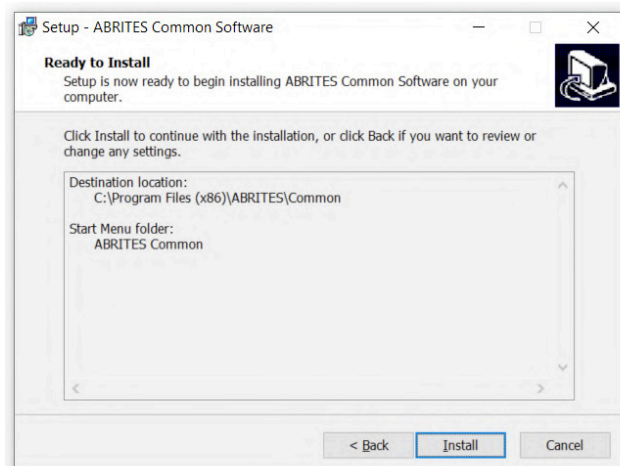


Press ‘Next’.

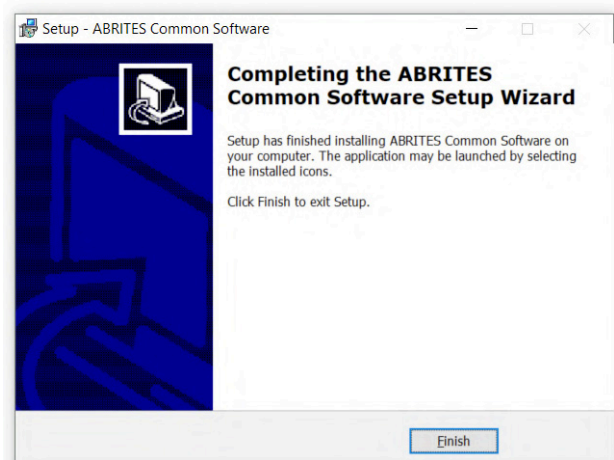
Press 'Next'.



Press 'Install' and wait for the installation to complete.



Press 'Finish'.



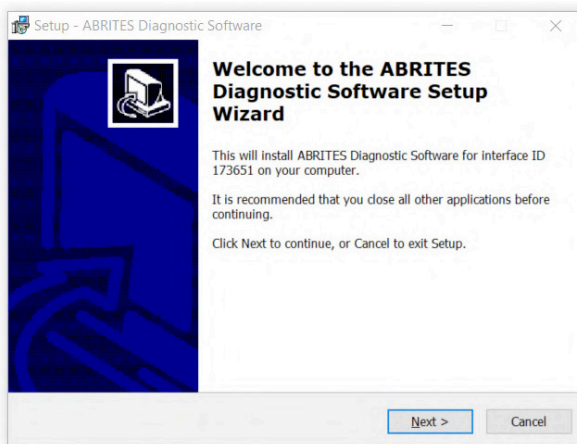
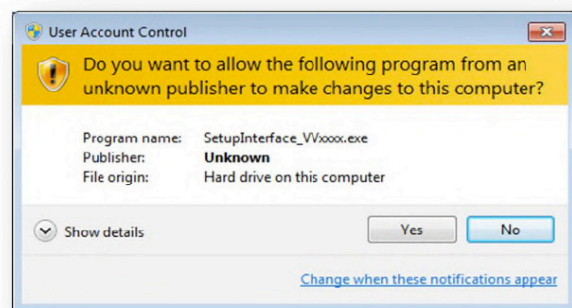
Step 2.

Please, start the executable file 'SetupInterface_17xxxx.exe' (or 16xxxx.exe) to initiate the installation procedure and follow the onscreen instructions.

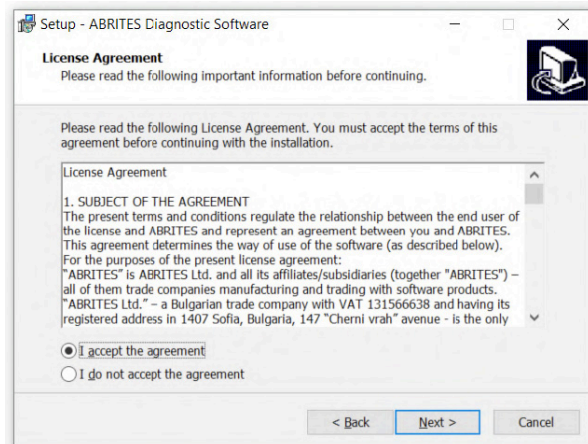


SetupInterface_17xxxx.exe

Depending on your operational system and settings you may be asked to confirm the start of the installation procedure or to type in your administrative credentials.

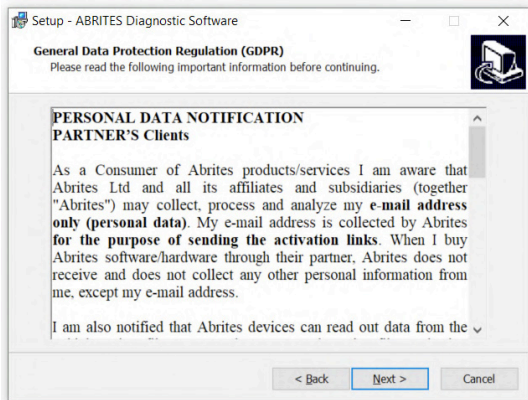


Press the "Next" button to proceed with the installation.



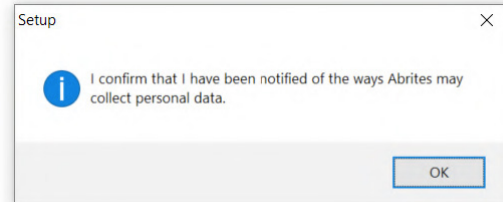
Read the license agreement carefully and select "I accept the agreement" if you accept it. Then press the "Next" button.

If you do not agree press the "Cancel" button to interrupt the installation procedure.

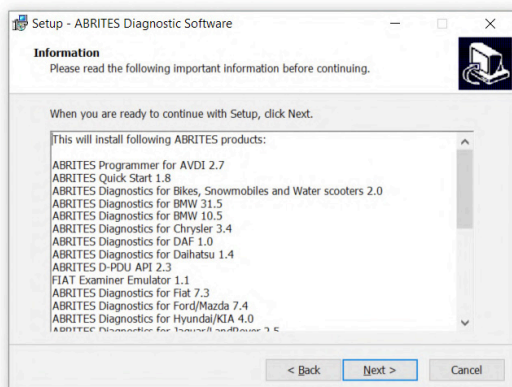


Read the General Data Protection Regulation (GDPR) and press the "Next" button.

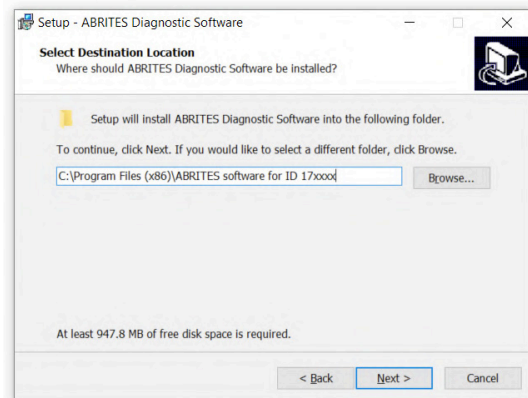
If you do not agree press the "Cancel" button to interrupt the installation procedure.



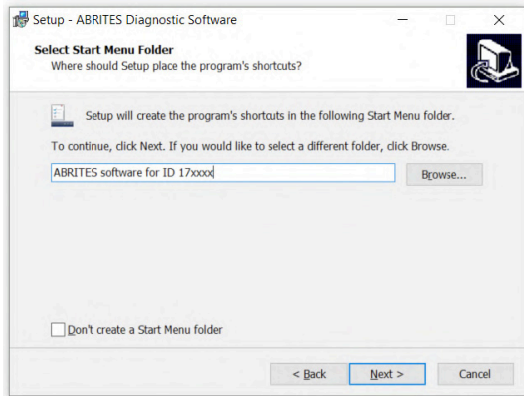
Confirm the GDPR by pressing the "OK" button.



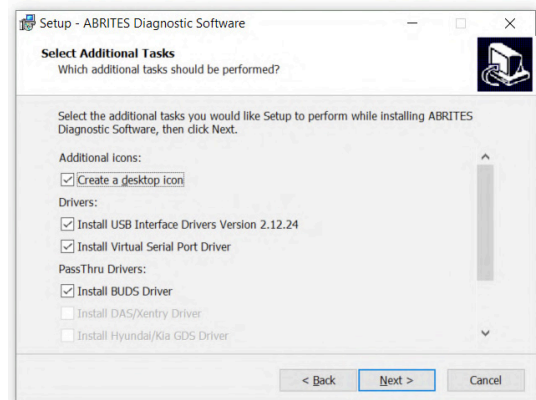
Press the "Next" button to proceed with the installation.



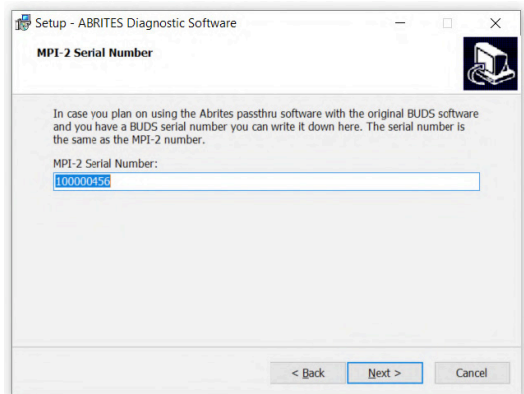
Press the "Next" button to proceed with the installation.



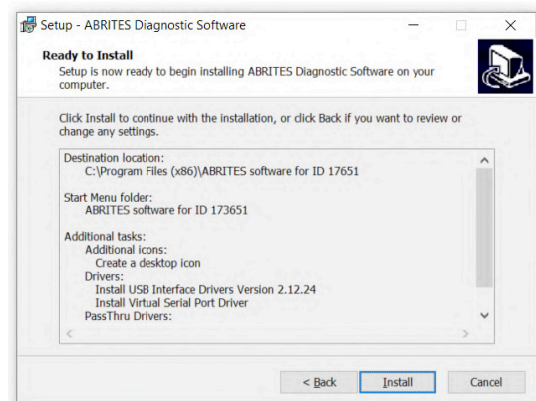
Press the “Next” button to proceed with the installation.



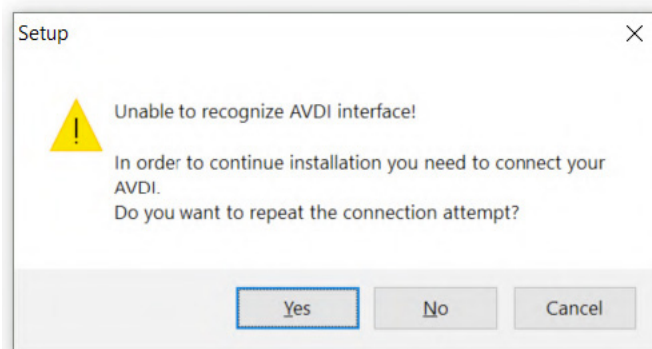
If you do not want desktop icons – uncheck the check box about the creation of these icons. Press the “Next” button to proceed.



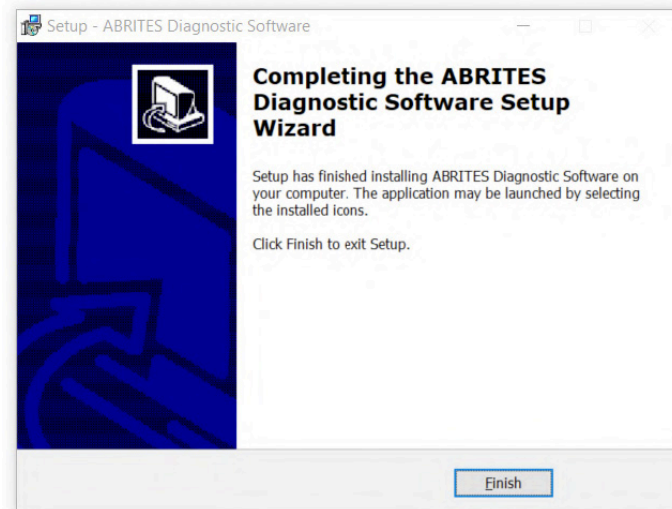
Press the “Next” button to proceed.



Press the “Install” button.



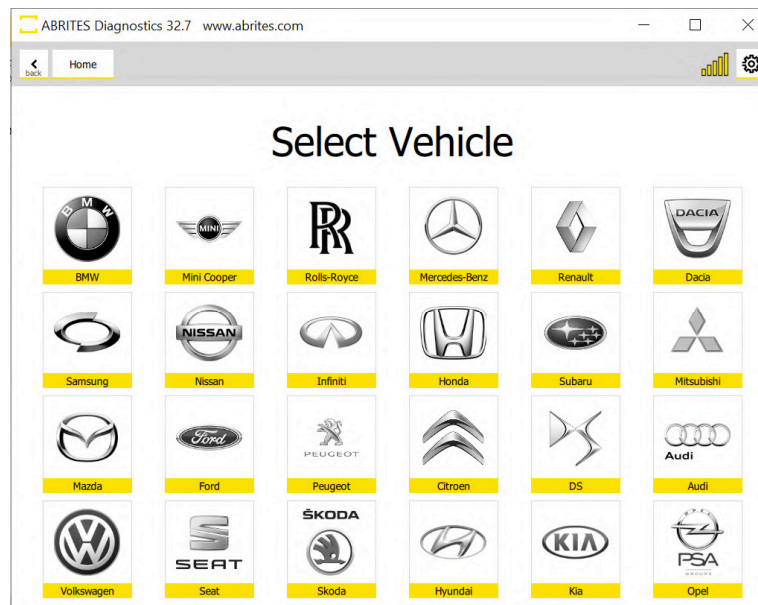
If you do not have your AVDI connected to the PC during the installation you will see this message. Connect your AVDI and press “Yes”.



When the installation is completed the wizard will create an “Abrites Quick Start for ID17xxxx (or 16xxxx) desktop icon.

New generation Abrites Online Diagnostics for BMW/Mini, Renault/Dacia/Samsung, Honda, Mercedes-Benz, Mitsubishi, Nissan/Infiniti, RollsRoyce, Subaru, Ford/Mazda, PSA, Hyundai/KIA, VAG

During the half of 2014 Abrites Ltd. released a new generation of online diagnostic software. The Software is currently distributed together with the older platform. The new generation software (versions 31.5 and later) requires Internet access due to the large calculations performed by the Abrites server instead of the user’s computer.





Connecting to AVDI...

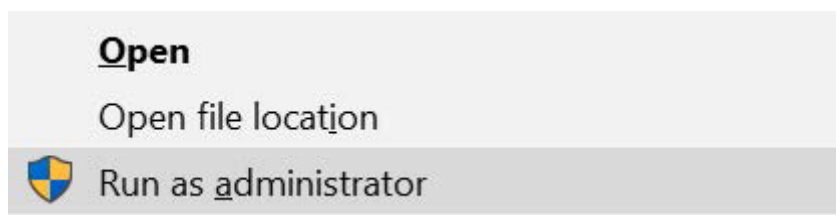
When the software is launched it will display the messages for server connection and AVDI connection.

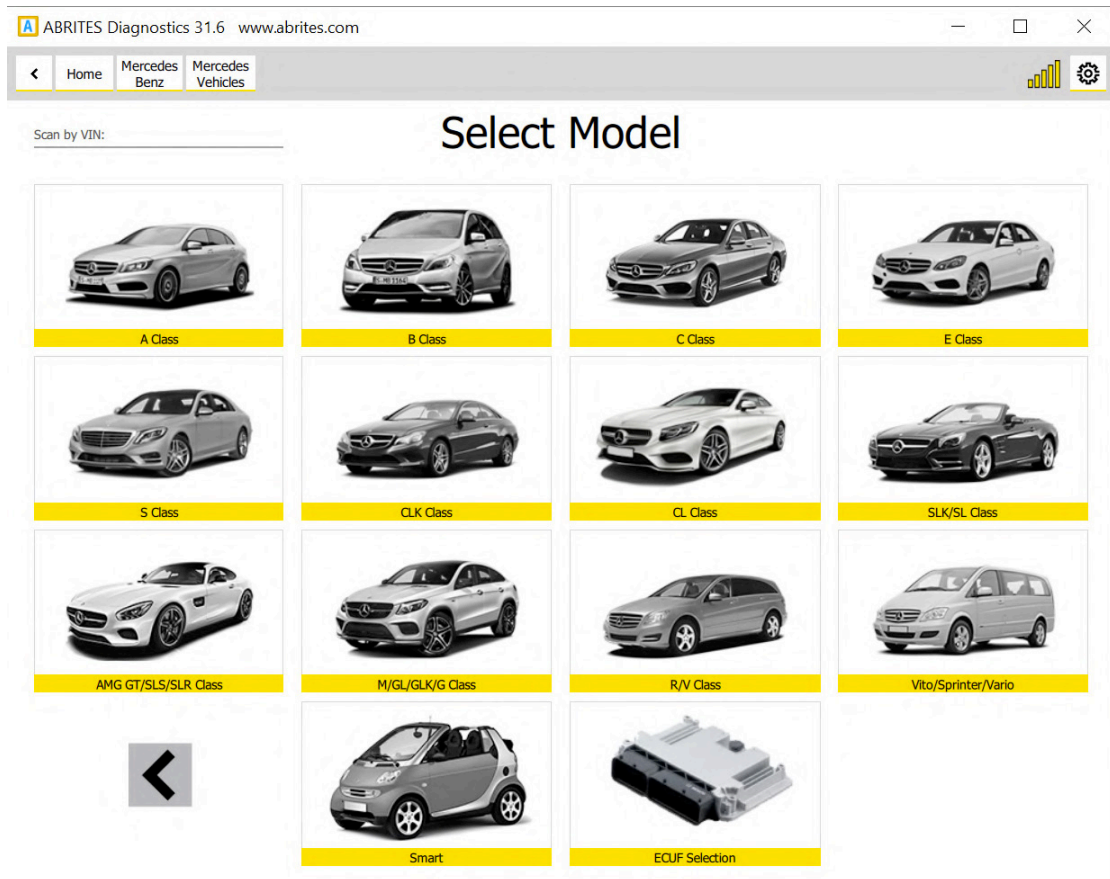


Connecting to AVDI...

When new updates are available the Abrites software has to be run as administrator.

If more than one component need to be downloaded the software has to be run it one more time as administrator. Right click on the Abrites Quick Start icon on your desktop and select "Run as administrator".





As soon as the interface is recognized and all updates are installed the list of available models will be displayed.

Please, be informed that the installation includes a copy of the user's manual to which you could refer at any time. It is stored in the following location:

Start menu -> Program Files -> ABRITES -> Common -> AVDI Common User's Manual

You could use the interface for any given diagnostics by going to the following location:

Start -> Program files -> ABRITES software for ID17xxxx(or ID16xxxx) -> choose one of the folders named by brand or open the "ABRITES Quick Start.exe" file.

ABPROG

You could access the ABPROG Programmer for AVDI by going to the following location:

Start -> Programs -> ABRITES software for IDxxxxxx -> ABPROG -> ABPROG.exe.



ZN030-ABPROG + ZN031-M35XXX/SPI/I2C Adapter + ZN046 (key renewal adapter for Hitag 2 keys) + ZN034 (ABPROG flat cable) together with Abrites EEPROM Programmer software allow you to erase and write SPI EEPROM memory with and without incremental registers.

A detailed user manual is included in the following directory:

Start menu -> Program Files -> ABRITES -> Common -> ABPROG

PROTAG

The new generation Abrites PROTAG Programmer is the latest upgrade to our powerful key programming tool! The ZN003 contains the full functionality of the ZN002 and expands its capabilities.



You could access the PROTAG programmer software by going to the following location:

Start -> Programs -> ABRITES software for IDxxxxxx -> TagKeyTool -> ABRITES Tag Key Tool.exe



A detailed user manual is included in the following directory:

Start menu -> Program Files -> ABRITES -> Common -> Tag -> Tag Key Tool Common User's Manual

3. Quick Start

The Abrites Quick Start for IDxxxxxx where “xxxxxx” is the ID of your AVDI is a simplified user interface which allows you to start working with the AVDI in a much quicker manner.

After the installation is complete you should have a Quick start icon on your desktop as well as a start menu shortcut.



3.1 Interface preparation and connection to the PC

Connect the USB cable from the AVDI package to the interface.

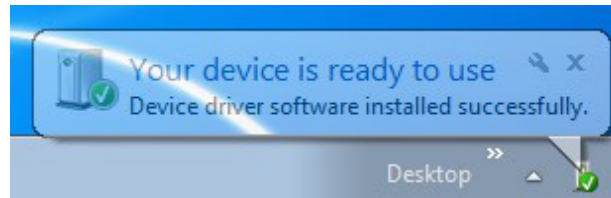


Connect one of your diagnostic cables (OBDII, Deutsch etc.) to the interface



Connect the main USB connector(CB104) to your PC

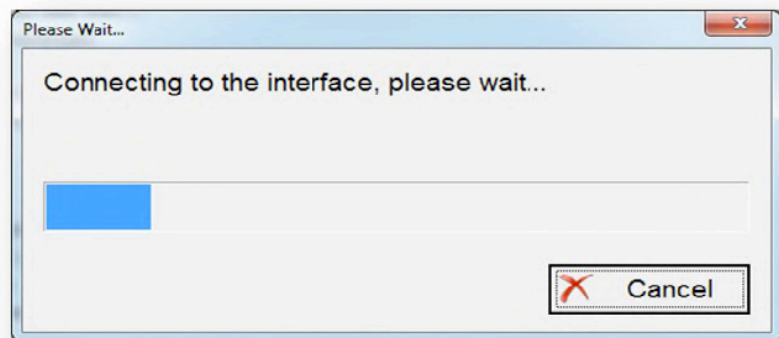




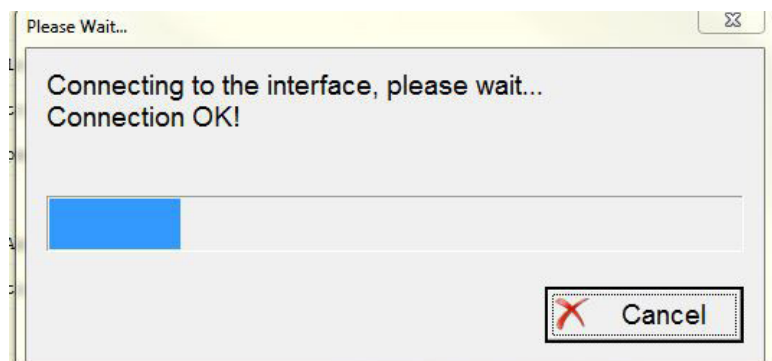
If you are connecting the interface to your USB port for the first time wait until Windows notifies you that the drivers are installed successfully. Please, take into account that if you reconnect the interface to another USB port of your PC for the first time you might need to wait again until Windows confirms your successful installation.

You are ready to run some of the diagnostics.

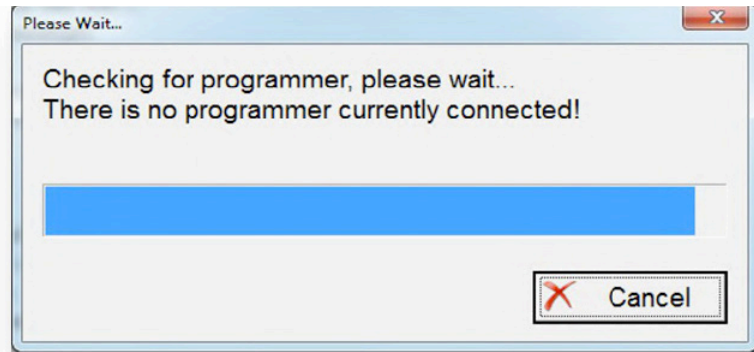
When you start a diagnostics you should see this:



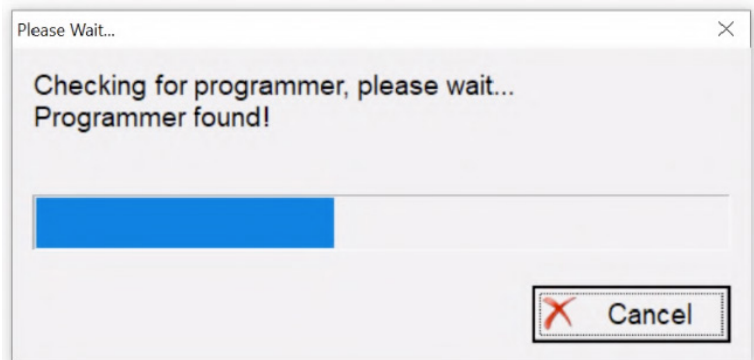
This means that the connection to the interface is OK:



The software checks for connected PROTAG programmer:



If you HAVE connected the PROTAG programmer you should see this message that the PROTAG programmer is successfully recognized and you can start working:



4. Using AVDI with a virtual machine (VM)

If you like to use your AVDI interface (software) with a virtual machine here are some preliminaries that should be made.

4.1 Install AVDI software on the VM

After you have loaded and played the VM on which you would like to use your AVDI interface, please install the ABRITES Software for the AVDI interface which you want to use on the VM. This is done exactly as the installation on your host PC (see [2.1 Software installation steps](#)).

Be sure that the checkbox about the installation of the interface's USB drivers is set, especially if you are installing the Abrites Diagnostic Software for the first time on this machine.

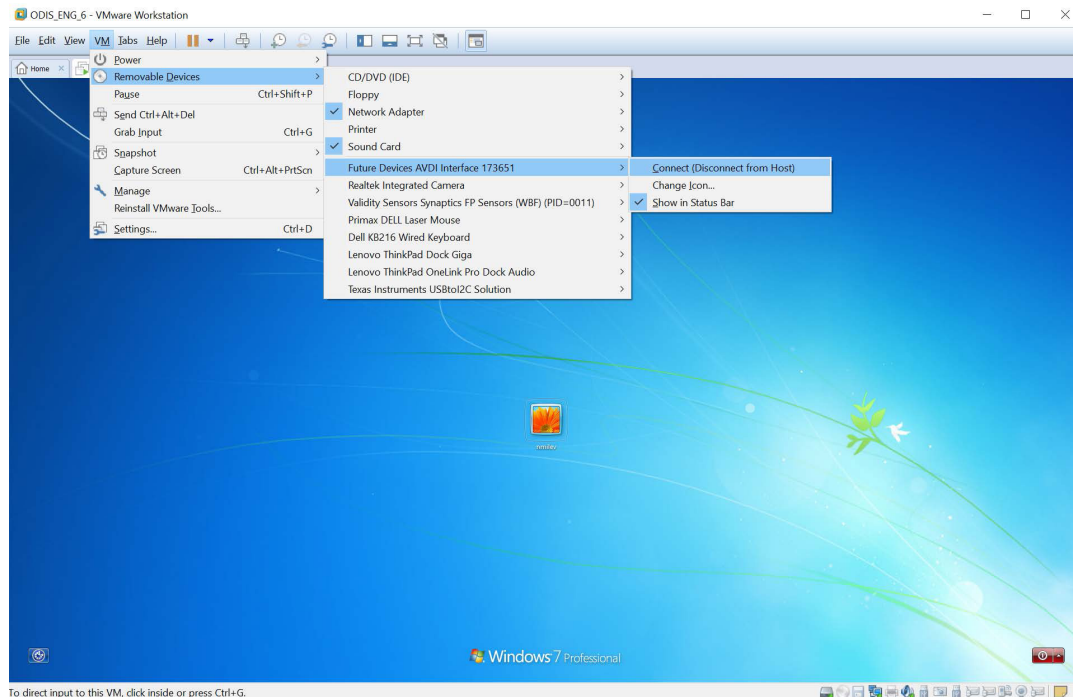
Wait for the drivers to be installed.

4.2 Connect AVDI to the VM

After the ABRITES Software is installed on the VM and you have connected the AVDI interface to an USB port of your PC you should redirect this port to the VM, otherwise you cannot use the AVDI interface on the VM!

This can be done in the following way (example with VMware):

From the main menu of the VMware player, select “Virtual Machine” → “Removable devices” → “future devices avdi interface 17xxxx(or 16xxxx)” → “Connect (Disconnect from host)”.



Here 17xxxx(or 16xxxx) is your interface identification number.

You will be shown a message informing you that the USB device will be unplugged from the host machine and connected to the virtual machine.

If you like to disconnect the AVDI interface from the VM (so you can use it on the host PC) you can either close the VM Player or do it through the VMWare menu “Virtual Machine” → “Removable devices” → “future devices avdi interface Vvxxx” → “Disconnect (Connect to host)”.

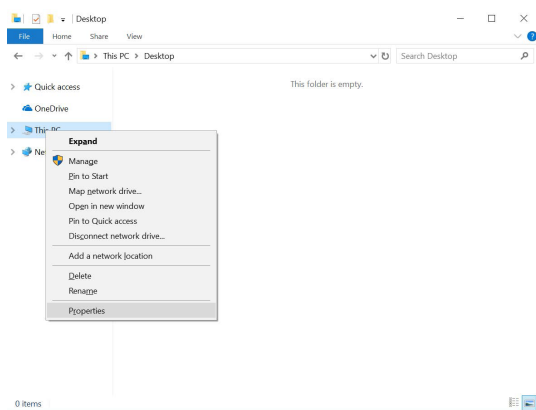
4.3 Shut down the VM

After you have finished working with the Virtual Machine you should perform “Shut down” of the Operating System. This applies also when using the J2534 Passthru driver on Virtual Machines.

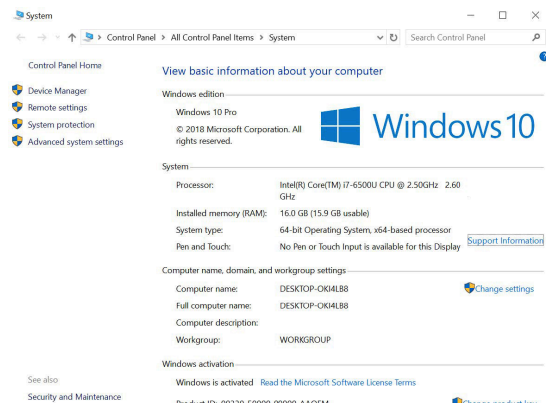
4.4 Set latency timer

Another prerequisite before you start using the AVDI interface on the VM is to set the latency timer of the COM port where the AVDI interface is recognized to 1ms.

This can be done in the following way:

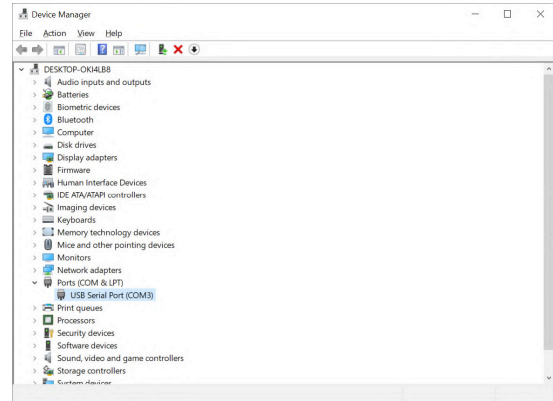


Open Windows Explorer then right click on “This PC” (“My computer”) and select “Properties”.

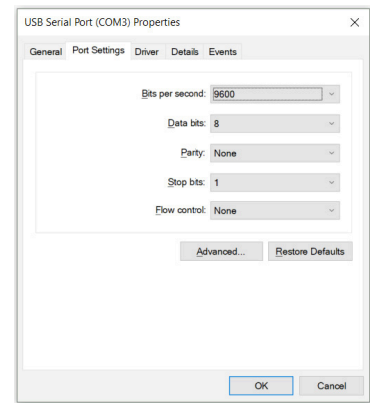


From the “System properties” window select “Device manager”.

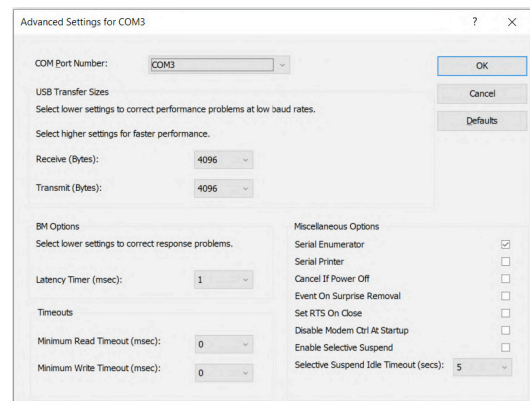
In the opened window select **“Ports (COM & LPT)”**. Your AVDI will appear in the list as “USB Serial Port (COM xx)” where “xx” can be different number. Double click on it.



From the screen select **“Port settings”** and then press **“Advanced”**.



Make sure **“Latency timer”** is set to 1.



Please, note that if you connect your AVDI to a different USB port you should do these steps again.

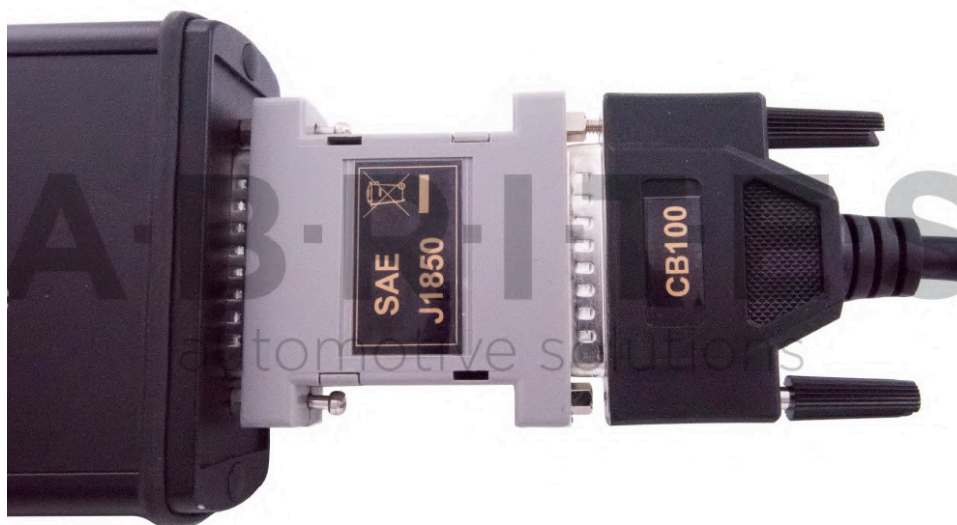
4.5 Working with J1850 adapter

Abrates J1850 adapter is intended to support SAEJ1850 PW 10.4 kbps and PWM 41.6 kbps protocol standards.

Adapter must be connected **between AVDI and OBD2 cable** using the DB25 sockets.

No additional settings are required.

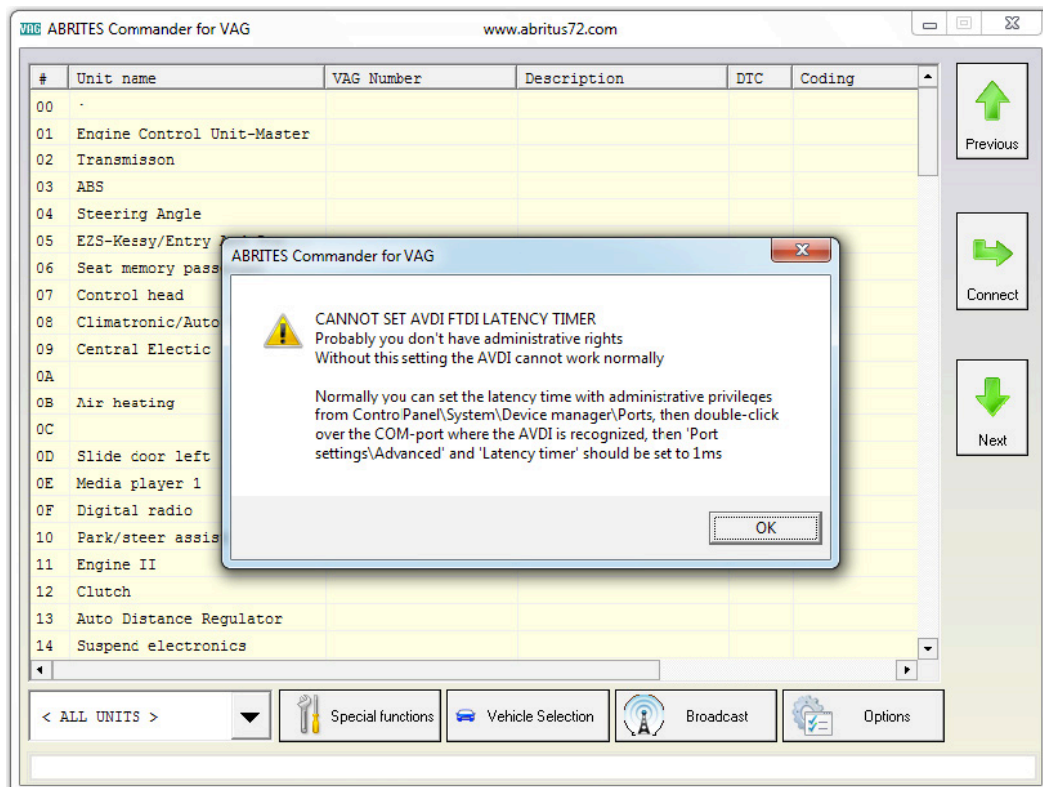
The J1850 adapter



5. TROUBLESHOOTING

LATENCY TIMER – PROBLEM

Sometimes depending on the user rights in Windows you may see the following message:



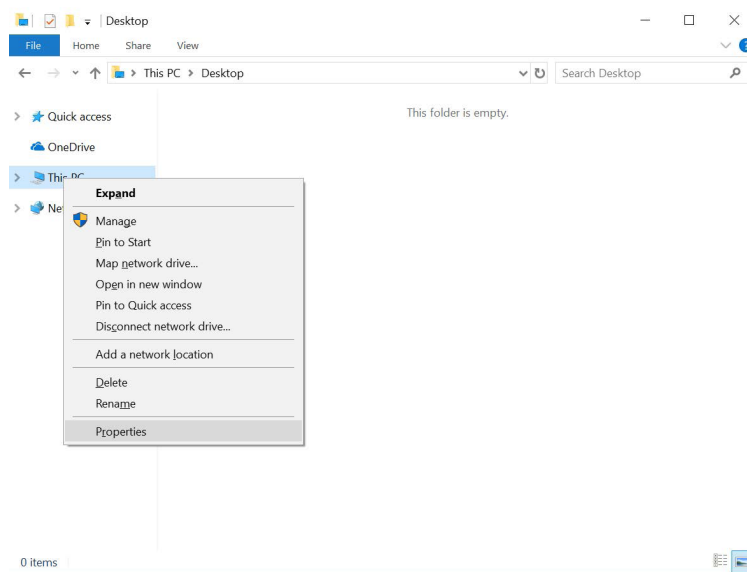
You have two options for this – first is to run the application as an administrator



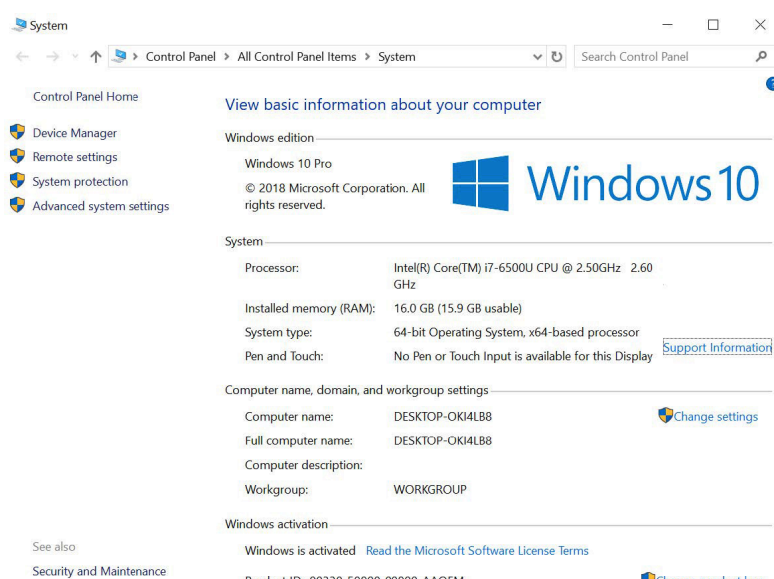
Or to change the port settings:

Connect your AVDI to a USB port of your PC

Open Windows Explorer then right click on “This PC” (“My computer”) and select “Properties”.

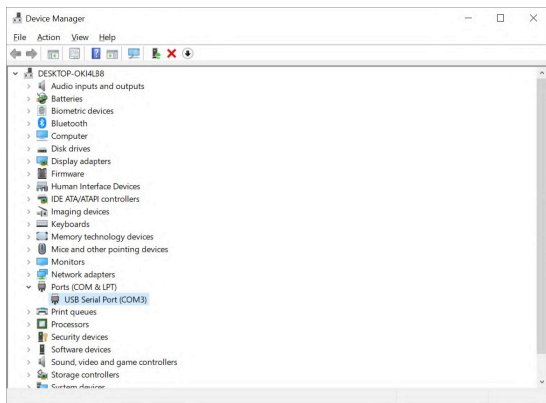


From the “System properties” window select “Device manager”.

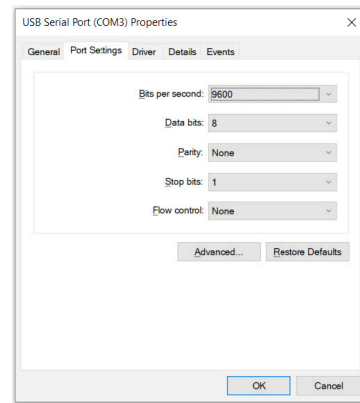


In the opened window select “Ports (COM & LPT)”.

Your AVDI will appear in the list as “USB Serial Port (COM xx)” where “xx” can be different number. Double click on it.

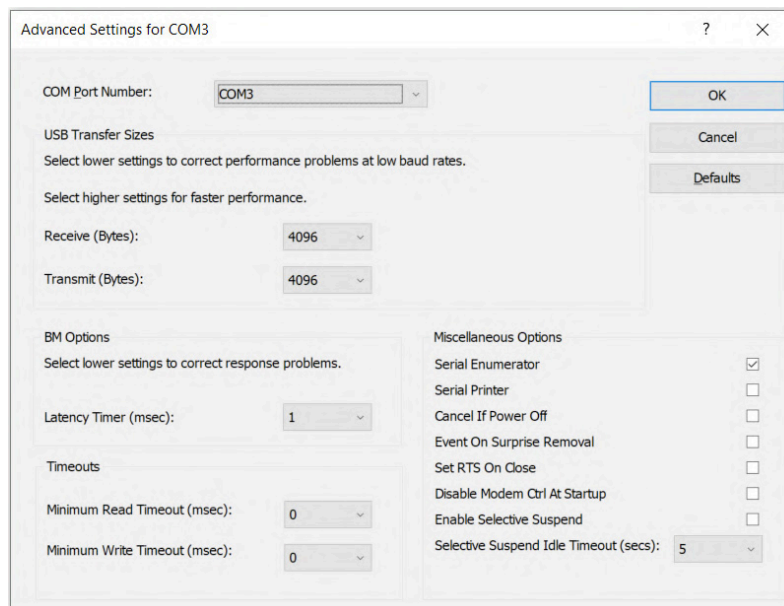


From the screen select “Port settings” and then press “Advanced”.



Make sure “Latency timer” is set to 1.

Please, note that if you connect your AVDI to a different USB port you should do these steps again.



INTERNET SYNCHRONIZATION (HARDWARE UPDATE)

The latest AVDI Diagnostics update introduced **a mandatory update** of the hardware over Internet. This update is regular and should be performed at least once a month.

If the Internet update is not performed, the hardware will have limited functionality and will be not able to connect to vehicles until it is activated.

Please note that performing the Internet update is an essential initial step. For many of the functionalities of your AVDI you will not require to have an Internet connection to your computer but it is recommended to have your computer constantly connected to the Internet, especially when you are using a function which requires Internet connection or when you are using one of the **online software**.

The procedure for performing the AVDI Internet update is as follows:

1. Download and install the latest AVDI Diagnostics update and start the Abrites diagnostics.
2. This Internet update is performed automatically once the AVDI Diagnostics software is started. It is indicated by the message **“Performing Internet activation...”**.
3. If the Internet activation is successful, the next time you start the diagnostic software, the message **“Performing Internet activation...”** should be not shown.

IMPORTANT: If the message “Performing Internet activation...” is not displayed the time you start the application, your hardware is ready for use. The Internet update will expire in one month when you will need to reconnect your computer to the Internet and make sure your interface performs the update when you start your Abrites diagnostic software.

4. If the message “Performing Internet activation...” continues to be shown the Internet update was not successful and the possible reasons for this issue might be:

No Internet connection to the computer you are installing your software on. In that case please allow the connection of this computer to the Internet.

The date on your computer is Incorrect. In that case please set the time and date on your computer to the current time and date at your location.

NOTE: Due to the time zone after running the latest SW update for the first time, the Internet pdate might not be successful in the first 1-2hours.

Effects if the Internet update is not performed:

The AVDI hardware is recognized OK, but no connection to the vehicle is possible.

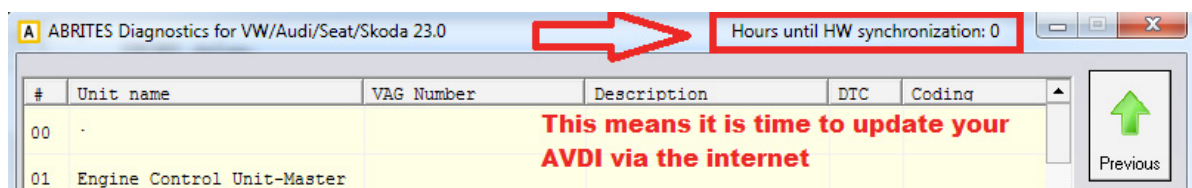
Some diagnostic software might crash if you try to connect to the car.

The update **MUST** be performed periodically (every 30 days) in order for your AVDI to always work properly and not experience any of the symptoms above.

Make sure to connect your AVDI and allow it to perform its internet update every 30 days.

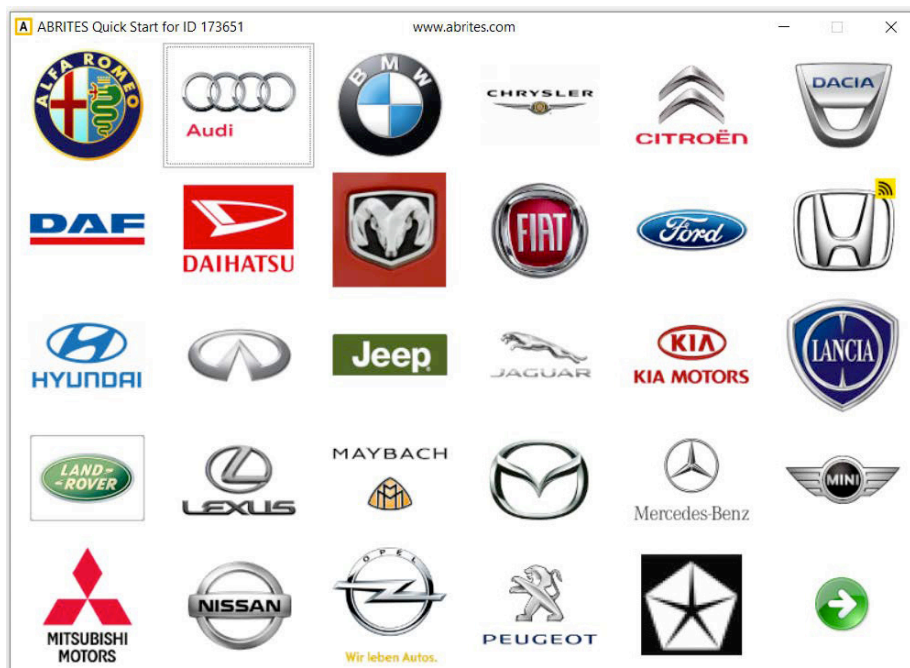
In case the procedure does not go as planned and you encounter an issue different to the ones above please contact support@abrites.com with a detailed description of the steps you took and their effect.

Upon starting the Abrites diagnostics software in the top right hand side of the screen you will see how many days (or hours) you have until the next synchronization. In case you see the following message you will need to perform the online update of your hardware.

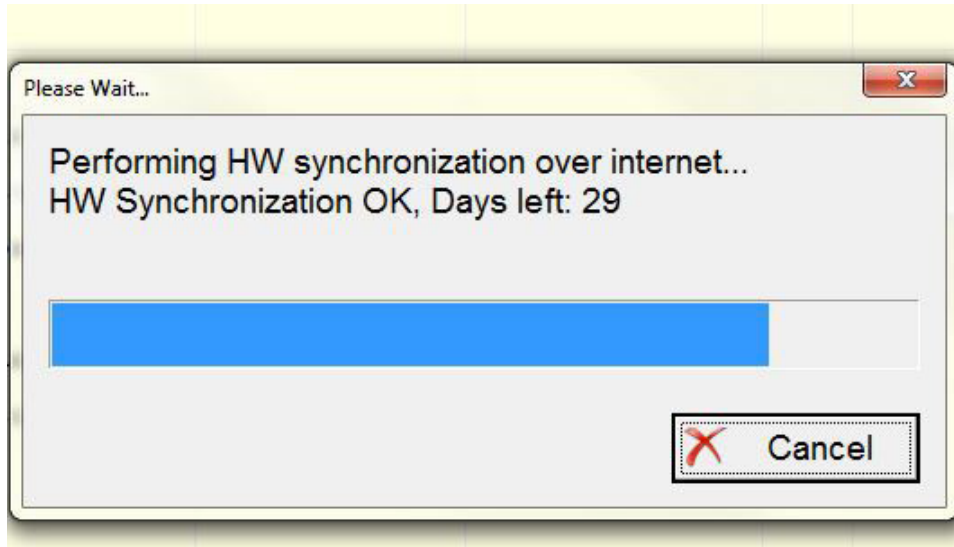


Then perform the following steps (After making sure that you have a stable internet connection):

1. Start your Abrites diagnostic software(for example you can use the Abrites diagnostics for Audi)

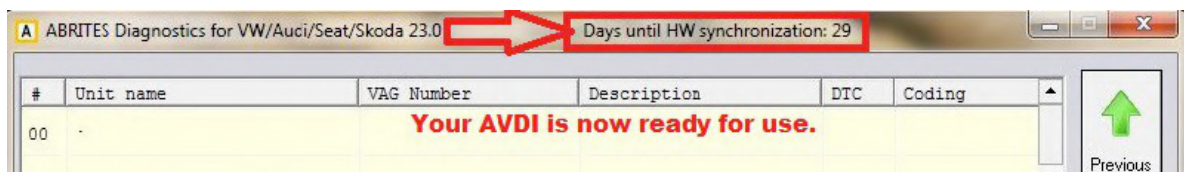


2. When you start the software you will see the following message:



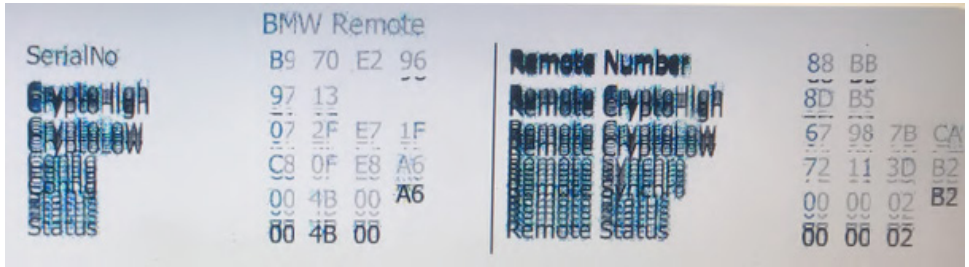
This means that your AVDI communicates with the Abrites secure server and the online synchronization is being performed.

3. Once the synchronization is over you will see the following message when opening the Abrites diagnostic software:



This means that the synchronization has gone according to plan and the AVDI is ready to use.

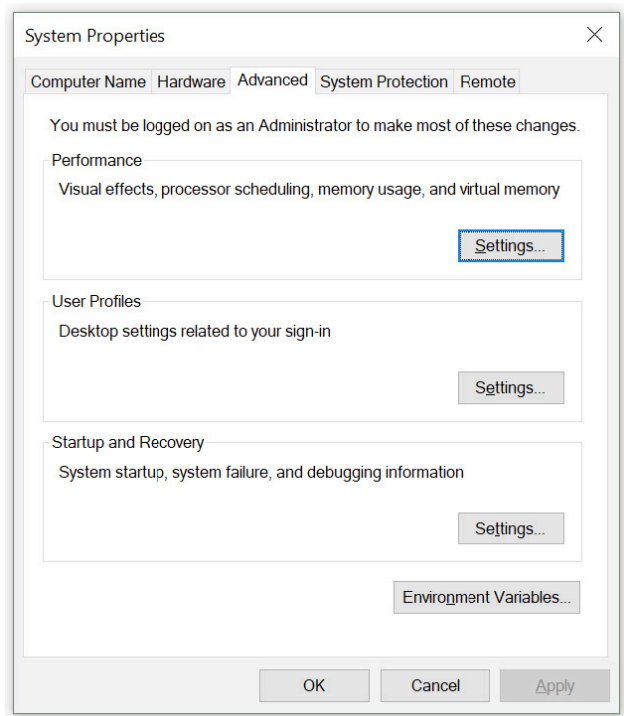
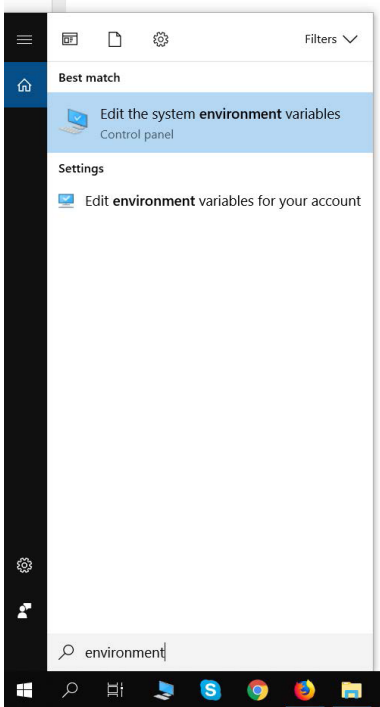
GRAPHIC PROBLEM USING THE ONLINE SOFTWARE



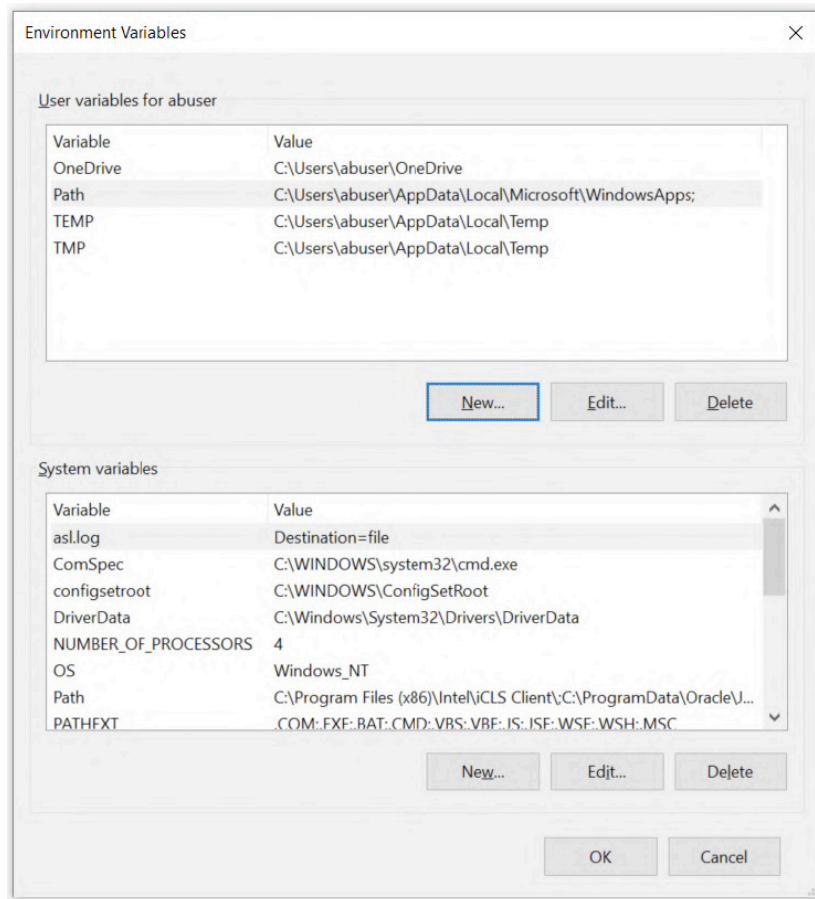
This graphic issue could happen when you are using one of the Abrites online software such as BMW2. Here is the solution:

Type “environment “ in the Windows search menu.

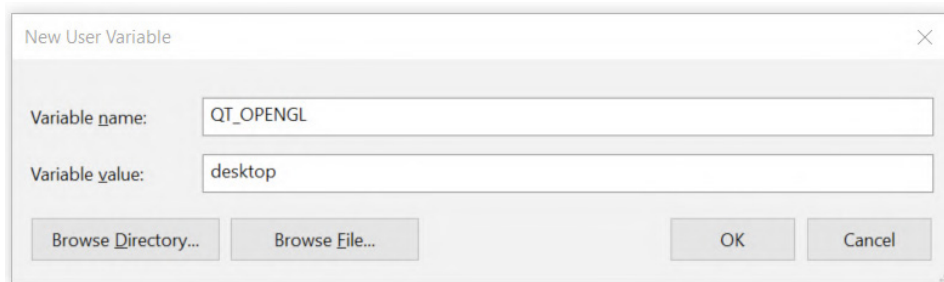
Go to the “Advanced” tab and select “Environment Variables”



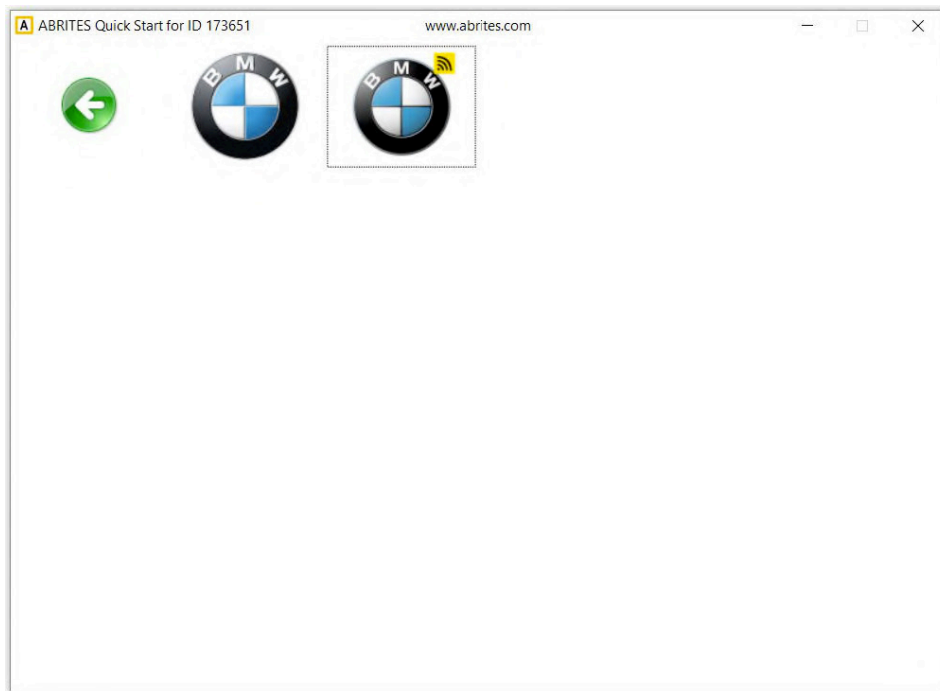
Press “New” under “User variables for ‘your user name’ “



Create a new variable named “QT_OPENGL” with value “desktop” (change it with “angle” or “software” if “desktop” does not solve the graphic issue) and press “OK”. Restart your PC.



ABRITES ONLINE SOFTWARE NOT OPENING



It is not possible to open any of the Abrites online software after update. Here are the reasons:

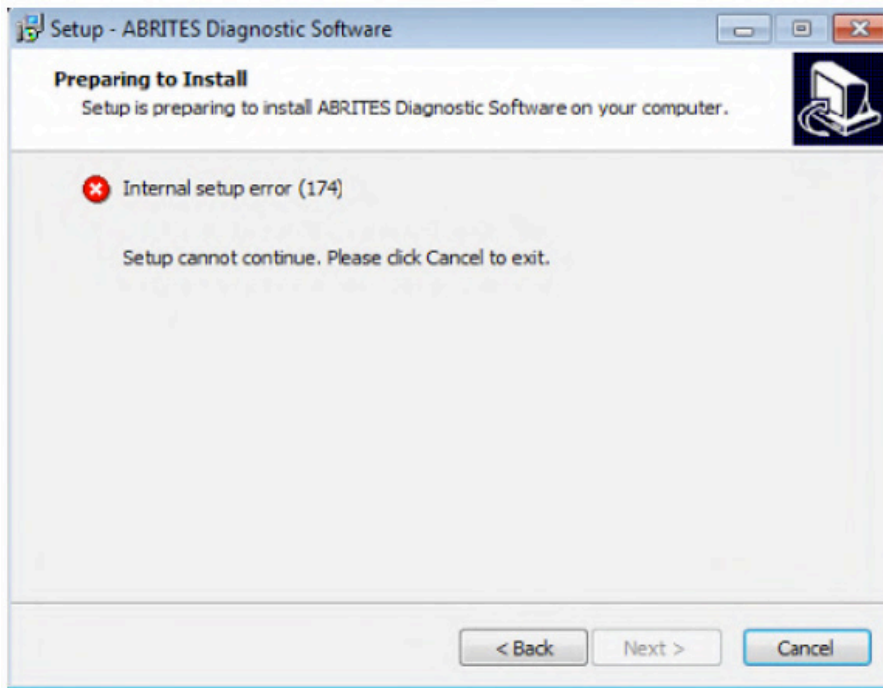
1. Service Pack 1 or later not installed on the PC, make sure the latest version of SP1 is installed on your OC
2. Your PC is not updated.

The solution for this problem would be to install SP1 and update your PC to the latest available version from the "Windows update" menu.

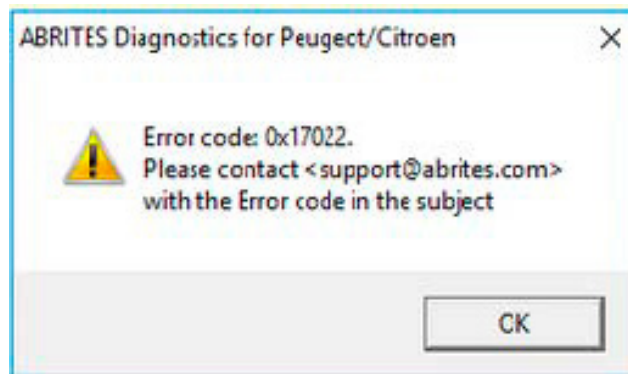
IMPORTANT: Minimum system requirements: Windows 7 SP1 + 2GB RAM (recommended 4GB).

You could try to apply the solution for the graphic issue also. Please refer to "Graphic problem using the online software".

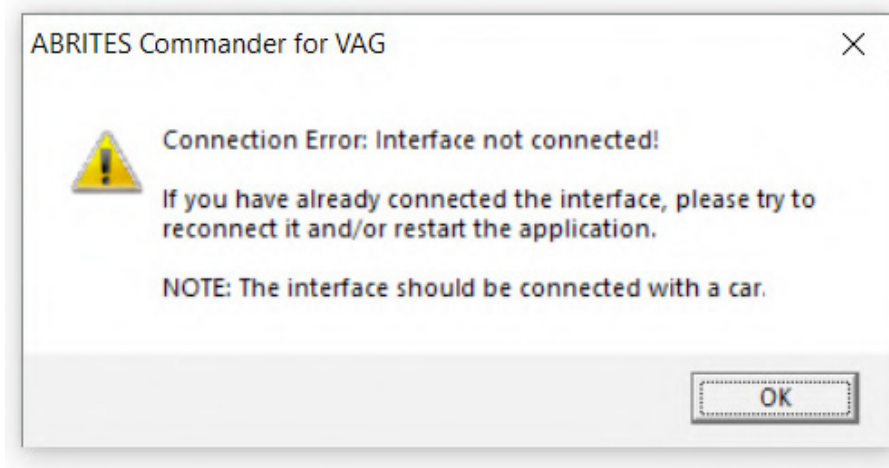
INTERNAL SETUP ERROR (174)



This error means that during the software build process your links haven't been built correctly. The solution would be to generate **new software links**. You can request them by contacting us at the following e-mail address: support@abrites.com

ERROR CODE: 0X17022

The error means that there are two versions of the same software installed on your PC. Uninstall the Abrites software and reinstall it using the latest links only.

CONNECTION ERROR: INTERFACE NOT CONNECTED!

This error means that your Interface is not recognized. You will need to perform some troubleshooting steps before sending the Interface for repair:

1. Make sure the software is properly installed and LED light of your Interface lights up.
2. Remove all Abrites software and reinstall it from the latest links.
3. Install the latest FTDI drivers:

<http://www.ftdichip.com/Drivers/VCP.htm>

Next to "Windows*" you will find a setup executable which should be downloaded and then installed on your PC.

4. Disable all antivirus programs.
5. Try with another USB cable provided by Abrites if available(your PROTAG uses the same USB cable as your AVDI Interface).
6. Try on a different PC.

If that does not resolve the issue your Interface has to be repaired. Please contact us at the following e-mail address: support@abrites.com

CONNECTING TO SERVER FAILED ERROR, CHECK INTERNET CONNECTION



**Connecting to Server Failed
Check Internet Connection!!!**

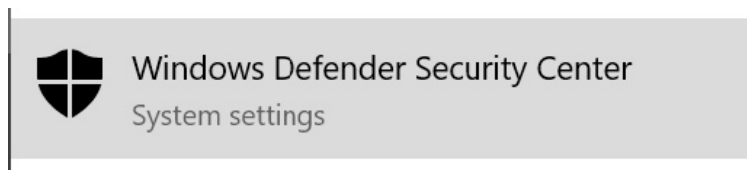
This error means that your Interface cannot connect to the Abrites server. There are a few possible reasons:

1. Your Internet Server Provider(ISP) has blocked some Internet ports which are used for connecting to our server. In that case you have to try connecting using another Internet connection such as 3G/4G.
2. You are running an old version of the Abrites online software. We keep only the last two software versions and if your software is not up to date you won't be able to connect to our server and you will receive this error. In that case you have to update your software to the latest software version from the latest links. E.g., as of Dec 18th the version for all online software is 32.7, this means you won't be able to connect to our server if you are running an older version than 32.5.

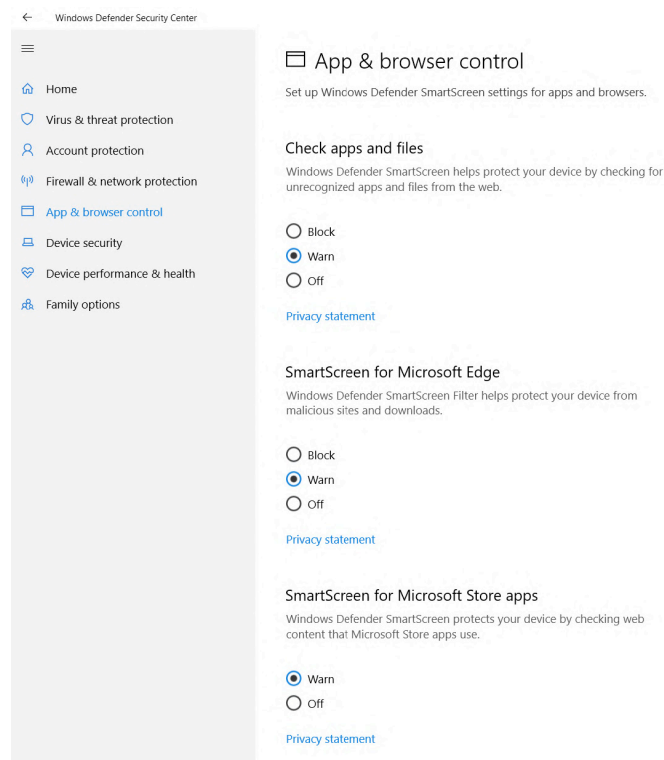
AVDI INSTALLATION WINDOWS DEFENDER SMART SCREEN PROBLEM

HOW TO DISABLE WINDOWS DEFENDER IN WINDOWS 10:

If ever during installation you come across any issues with Windows defender and Smart screen we advise you to start the Windows Defender:



Go to the Smart screen options(type "app & browser control" in the search menu) and disable the blocking:



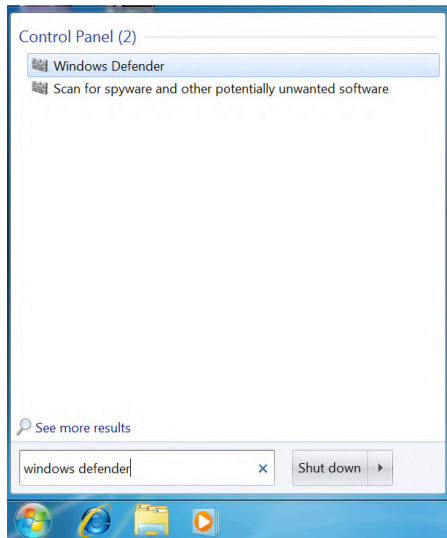
After reinstalling make sure to turn it back on in case real harm occurs.

Read more here:

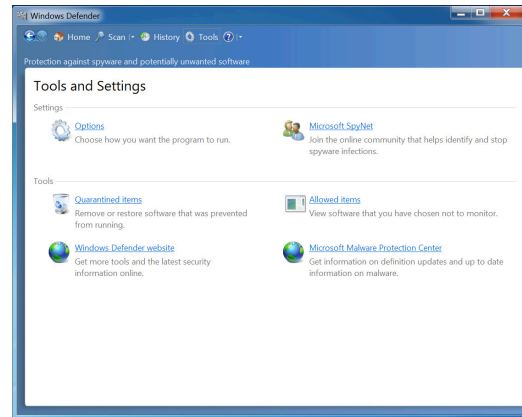
<https://www.microsoft.com/en-us/windows/comprehensive-security>

HOW TO DISABLE WINDOWS DEFENDER IN WINDOWS 7:

Type “Windows defender” in the search menu

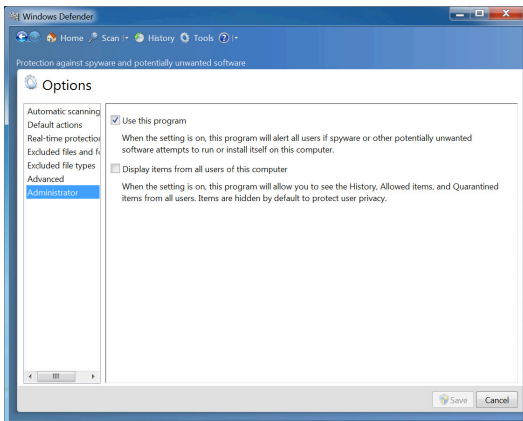


Select “Tools” followed by “Options”

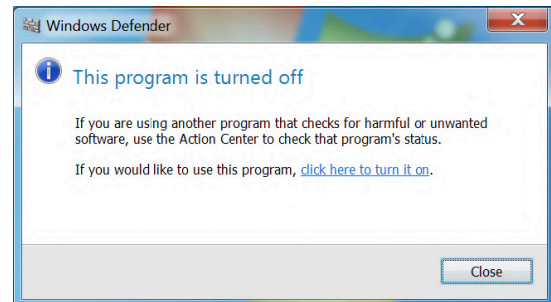


After reinstalling make sure to turn it back on in case real harm occurs

Select “Administrator” and uncheck “Use this program” followed by “Save”

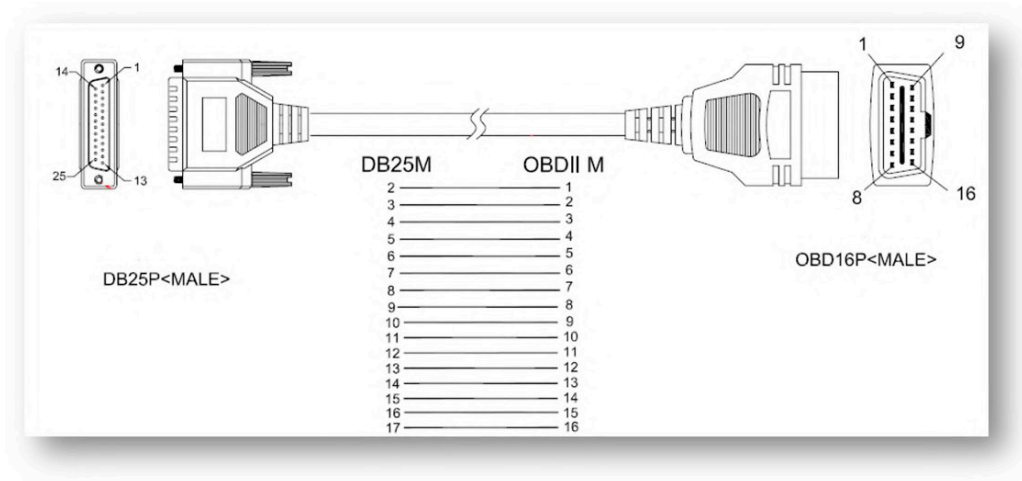


After reinstalling make sure to turn it back on in case real harm occurs. Please type once again “Windows defender” in the search menu and click “click here to turn it on”

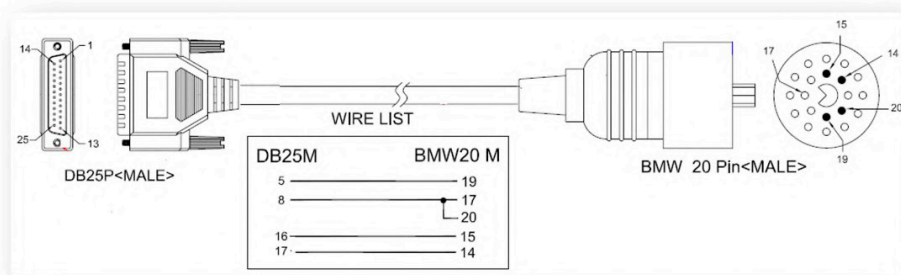


6. Additional cables and products

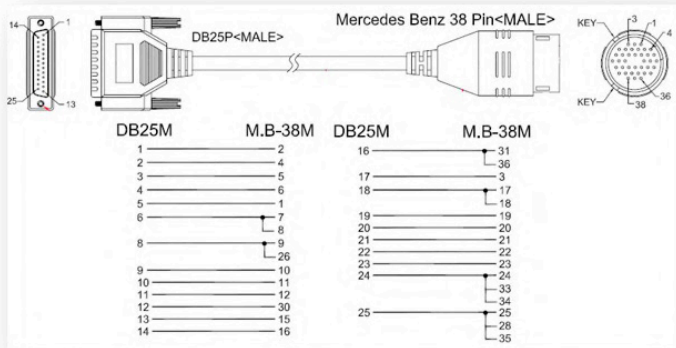
CB100 - AVDI OBDII CABLE (SAE J1962)



CB002 – BMW 20 PIN CIRCLE CABLE



CB003– MERCEDES 38 PIN CABLE



CB004- MERCEDES SPRINTER 14 PIN CABLE

OBDII (F) 14 pin cable
 4+5 1
 16 3
 7 14
 15 4

**CB005- CABLE FOR CONNECTING AVDI AND ESL(ELV)**

DB25(M) ESL
 5 GND
 8 K-line
 17 +12V

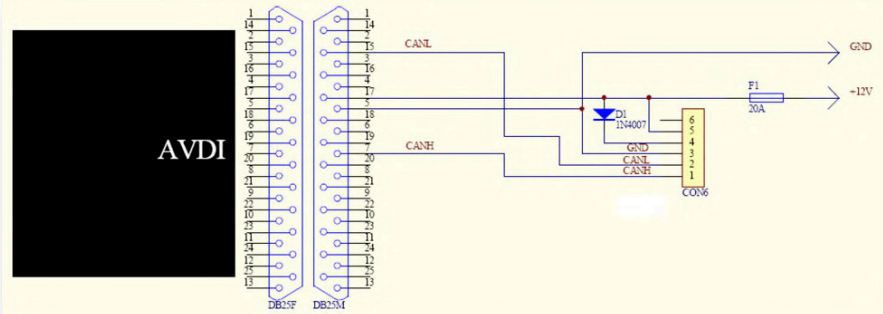
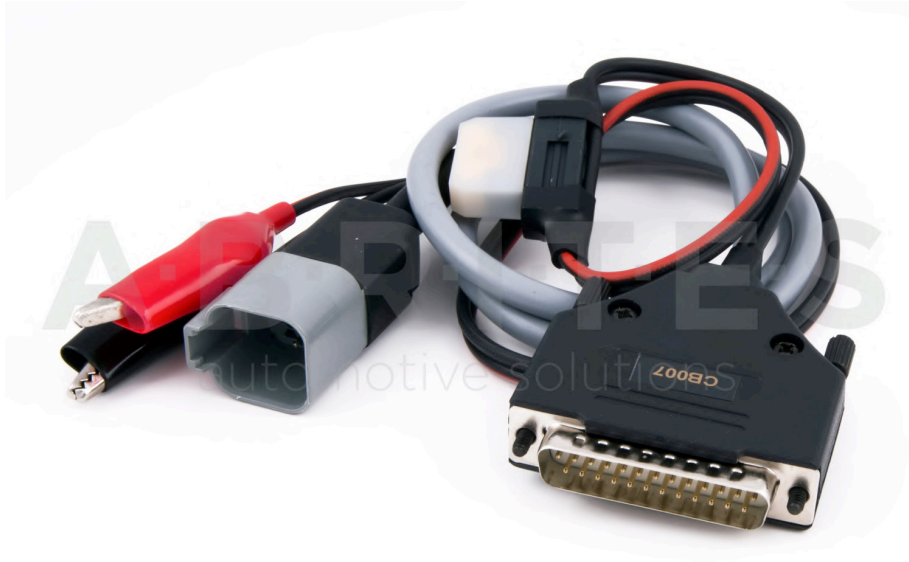
*This adapter has now evolved into CB026 and is not sold anymore.

**CB006- CABLE FOR CONNECTING AVDI AND DASHBOARD W203, W209, W211, W219**

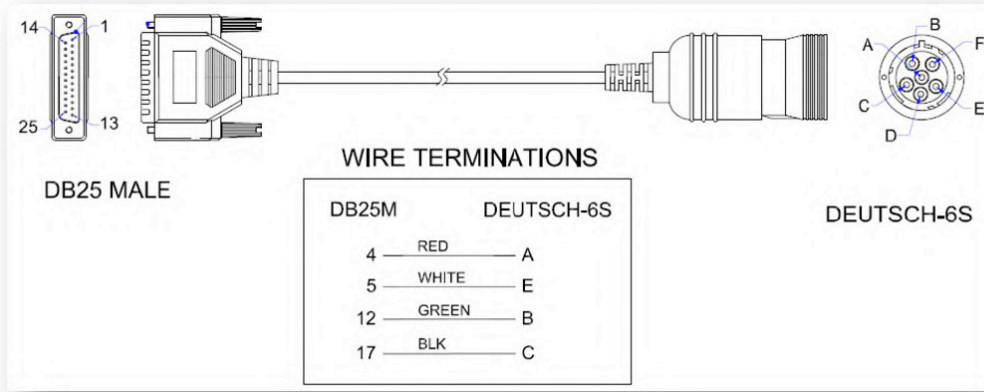
DB25(F) Dash connector
 5 GND (Dash pin 1)
 7 Can Hi (Dash pin 18)
 15 Can Lo (Dash pin 17)
 17 +12V (Dash pin 4+6)



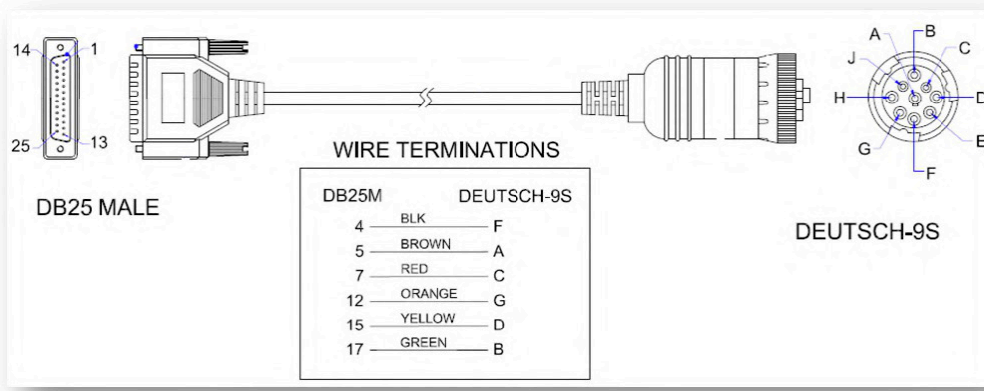
CB007- CABLE FOR CONNECTING AVDI AND BRP



CABLE FOR CONNECTING AVDI AND DEUTSCH 6 PIN



CABLE FOR CONNECTING AVDI AND DEUTSCH 9 PIN





J1850 ADAPTER



CB008 - CABLE FOR AVDI CABLE FOR BMW BIKE DIAGNOSTIC CONNECTOR



CB009 - AVDI CABLE FOR CONNECTION WITH TRUCKS DEUTCSH 6 PIN (J1708)



CB010 - ABRITES STAR CONNECTOR FOR FCA - NOT SOLD ANYMORE, NOW CB019



CB011 - ABRITES MERCEDES-BENZ CABLE FOR EZS, 7G TRONIC AND ISM/DSM



CB012 JLR ALL KEYS LOST CABLE SET



CB013 MSD/MSV BENCH CONNECTION CABLE SET



CB015 - BMW ENET CABLE



CB017 - ALL KEYS LOST CABLE FOR FCA



CB019 - FCA SECURE GATEWAY CABLE



CB021 - RENAULT-NISSAN JUMPER CABLE



CB022 - MERCEDES ACTROS JUMPER CABLE



CB023 - BMW MD/MG ECU CONNECTION CABLE



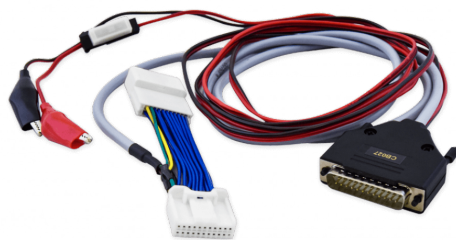
CB024 - MERCEDES-BENZ MD/MG ECU CONNECTION CABLE



CB025 - EXTENSION CABLE FOR DS BOX RELAY



CB026 - FBS4/FBS3 ELV CONNECTION CABLE



*CB027 - DIAGNOSTIC CABLE FOR TESLA MODEL 3
IT HAS REPLACED THE CB020 AND IS PART OF THE
ZN087 SET*



CB101 AVDI EXTENSION CABLE FOR ABPROG (ZN030)



CB102 - EXT CABLE FOR 25 PIN F/M



CB103 - OBDII Y CABLE M/2XF



CB104 - USB A-B CABLE



CB106 - AVDI OBDII CABLE (SAE J1962)



CB201 – AVDI CABLE FOR CONNECTION WITH SUZUKI MARINE ENGINES TYPE 1



CB202 – AVDI CABLE FOR CONNECTION WITH SUZUKI MARINE ENGINES TYPE 2 (ROUND)



CB203 – AVDI CABLE FOR CONNECTION WITH YAMAHA MARINE ENGINES



CB204 AVDI CABLE FOR CONNECTION WITH EVINRUDE MARINE ENGINES



CB205 EVINRUDE FLASH UPDATE CABLE



CB301 – AVDI CABLE FOR CONNECTION WITH APRILIA BIKES



CB302 – AVDI CABLE FOR CONNECTION WITH KTM BIKES



CB303 – AVDI CABLE FOR CONNECTION WITH BENELLI BIKES



CB304 – AVDI CABLE FOR CONNECTION WITH SUZUKI BIKES (6 PINS)



CB305 – AVDI CABLE FOR CONNECTION WITH HARLEY-DAVIDSON BIKES



CB306 – AVDI CABLE FOR CONNECTION WITH PIAGGIO BIKES

ZN002 PROTAG PROGRAMMER



ZN030 ABPROG Set



*ZN031 - ABPROG EEPROM/
BCM ADAPTER*



*ZN032 - ABPROG NEC ADAPTER
WITH SOCKET*



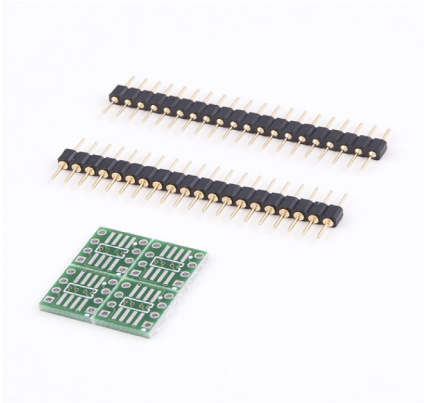
ZN033 - ABPROG NEC ADAPTER



ZN034 - ABPROG FLAT CABLE (OUTDATED)



ZN035 - ABPROG EEPROM SOCKET



ZN036 - IR AVDI CABLE



ZN037 - RENAULT CAN ADAPTER



ZN038 - FIAT/CHRYSLER CAN ADAPTER



ZN039-2-TOYOTA TRANSPONDER EMULATOR



ZN040-A6/A7/A8 CAN ADAPTER

The Abrites A6/A7/A8 CAN Adapter is used in order to make the ALL KEYS LOST procedure for Audi A6/A7/A8 easier providing all necessary connections (OBD,DB25 and CAN separator connector). The set has a separate OBD plug that shorts PIN 1 and 16 on the OBD connector of the car to force ignition while reading the ELV using the green K-line cable.



ZN046 - PCF FOR ABPROG



ZN047 - FIELD DETECTOR RENAULT CARD 125 KHZ



**ZN048 - FIELD DETECTOR UNIVERSAL
KEY 125/20 KHZ**



**ZN049 - AVDI ADAPTER FOR CONNECTION WITH
K-LINE BMW VEHICLES (PASSTHRU ONLY)**



ZN051 - ABRITES DISTRIBUTION BOX



**ZN052-ABRITES CABLE SET FOR ADAPTING
IMMO PARTS USED TOGETHER WITH VN005**



**ZN053-AVDI EXTRACTOR CABLE USED
WITH VN006 SPECIAL FUNCTION**



**ZN054-EXTENSION CABLE SET FOR DIRECT
CAN CONNECTION FOR VAG VEHICLES**



ZN051 DISTRIBUTION BOX



The ZN051 Distribution Box is mainly used together with the MN026 Special function for Mercedes and VN004 Special function for VAG. The main purpose is to export the password from the EZS 10 times faster than without the DS Box(MN026) and to read engine ECU in boot mode. It has a hidden relay, which cuts the ignition when needed and re-connects it once again automatically. The DS Box allows us to connect it clean between the AVDI and the OBD. In addition to the Fuse Relay that is now built into the Abrites Distribution Box, it's work can also be monitored by the built-in LED.

Using the ZN051 we also open the door for many new features. It allows us to work easily with boot mode on EDC17/ MED17 boot mode for the Abrites diagnostics for VAG and others as well.

The distribution box now also includes the option to be updated so all new future functions and features will be available immediately.

The ZN051 set contains 9 pieces, which are as follows:



Needle Connectors



DB25 Connector Cable



CAN HI and CAN LOW long cables



Fuse Adapter Cable ,Crocks Cable and 1 K-line Cable



Distribution Box



DB15 Boot Mode Connector Cable



Pin Connectors (Used for EM001 update)



The kit will also include 5 resistors.

Distribution Box connection ports:



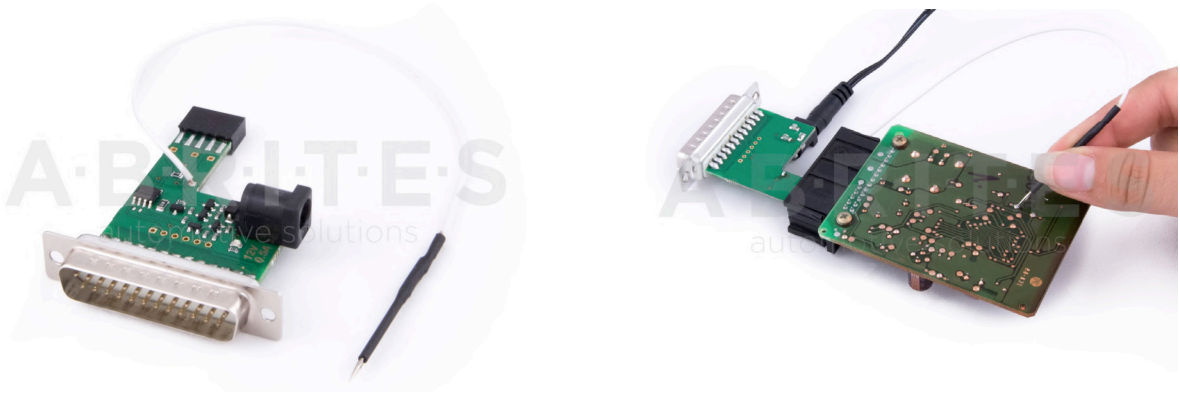
1st two ports (Red and Blue) are for CAN HI and CAN LOW 6-14, the 2nd ports below them are for CAN HI and CAN LOW 3-11. These ports are mainly used when virginizing and adapting Mercedes TCUs and ECUs when using MN026.

Both Green ports K1 and K7 are used for the K-Line connection (K7 has to be used when exporting a password from Mercedes EZS when using the Relay method).

B+ and GND ports are used when updating EM001 Emulator.

The Relay Ports are both in red and this is where the Fuse Adapter is connected.

ZN055 - ABPROG EWS3 ADAPTER VN006 SPECIAL FUNCTION



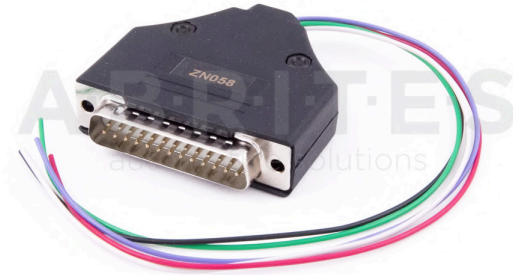
ZN056-HONDA K-LINE ADAPTER



ZN057-EEPROM WIRE EXTENDER FOR ABPROG EEPROM/BCM ADAPTER



ZN058-V850E2 ADAPTER FOR ABPROG



ZN059-VAG VDO CLUSTER ADAPTER



ZN060 - VAG MICRONAS (NEW STYLE CONNECTOR) CLUSTER ADAPTER



*ZN061 - OLD-STYLE MICRONAS
CLUSTER ADAPTER*



*ZN062 - 12V/0.5A DC POWER
ADAPTER (USED WITH ZN055)*



*ZN063 - 12V/1A DC POWER ADAPTER
(USED WITH ZN059 - MINI DB - VDO
AND ZN060 - MINI DB -
MICTRONAS)*



ZN065 - PWM VOLTAGE CONVERTER

The PWM voltage converter is to be used only in cases when reading an ECU on bench requires the PWMs to be powered with 5V, instead of the usual 3.3V. The PWM voltage converter is compatible ONLY with DSBox v. 2.3).



ZN066 - SUBARU TRANSPONDER EMULATOR



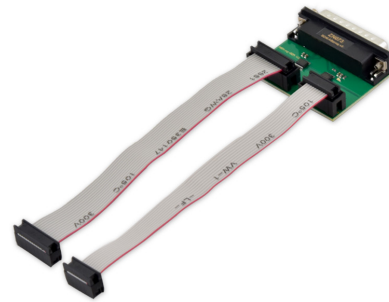
ZN069 - TOYOTA MECHANICAL KEY (H-TYPE) ADAPTER SET





ZN072 - ABRITES CABLE SET FOR TESLA MODEL S/X AND MODEL 3

(information regarding use can be found in the Abrites Diagnostics for Tesla user manual) outdated and replaced by ZN087



ZN073 - BDM PROGRAMMER



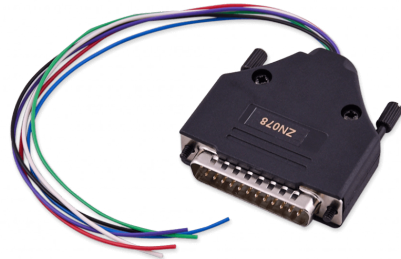
ZN074 - ECU READING SET



ZN075 - IR ADAPTER FOR MERCEDES ACTROS



ZN076 - USB IR ADAPTER



ZN078 - V850ES ADAPTER FOR ABPROG



ZN079 - ZF 8HP TCU CONNECTION CABLE



ZN080 - BCM2 SOLDER-FREE CONNECTION SET



ZN085 - ABRITES PROGRAMMER RH850/V850



ZN087 - ABRITES CABLE SET FOR TESLA MODEL S/X AND MODEL 3

TA30 Abrites DST-AES transponder emulator

The TA30 is a transponder emulator designed to emulate ALL DSTAES transponders where Page 1 is 88, A8 and A9. This allows extended functionality and the ability to program transponders NOT ONLY found in various Toyota vehicles of the latest generation but ALL vehicle types using these transponders, giving the customer the ability to write and lock all pages of the EEPROM as well as write and lock ALL KEYS. Using our software, the customer can also perform TIRIS AES verifying of a AES1 crypto key. The TA30 has been placed in our signature shell giving the product a sleek finish.

This reusable transponder (all previously locked pages can be unlocked) is designed to be programmed with the Abrites TagKeyTool and the PROTAG and will offer a stable working solution for all customers with problems in such vehicles.



TA31 Abrites Extractor

The TA31 Abrites Extractor can be used to obtain the 7th byte in VAG cars. It is also used in some Hyundai/Kia cars to read the PIN code from a working key, together with the TA31 Abrites Extractor. Below you will find two photos of the TA31 Extractor and how it should be properly placed next to the ignition:



TA41 Subaru DST-AES Emulator

The TA41 Subaru DST-AES Emulator has the ability to emulate a Master key and be used as a key for Subaru H type bladed keys. It requires the Abrites ZN002 to be programmed.

It is used together with the SB001 special function in Subaru ALL KEYS LOST H-type bladed (mechanical) key situations.

The TA41 can also be used and programmed as a key to the vehicle and used as one. It covers the functionality of the ZN066 however requires a PROTAG to do so.



Keys produced by Abrites Ltd.

- TA10 - ABRITES key (BCM2)-315 Mhz
- TA11 - ABRITES key (BCM2)-433Mhz
- TA12 - PCB for Mercedes IR key fob case with chrome 433Mhz
- TA13 - PCB for Mercedes IR key fob case small size 433Mhz
- TA14 - Abrites KEY for all types Mercedes with IR 433Mhz
- TA15 -Abrites KEY for all types Mercedes with IR 315Mhz
- TA16 - Abrites KEY-CARD for Renault vehicles
- TA19 -Abrites Electronic key head (Renault/Dacia)
- TA21 - PCB for Mercedes IR key fob case with chrome 315Mhz
- TA22 - PCB for Mercedes IR key fob case small size 315Mhz
- TA23 - Abrites electronic key head with remote control (Renault/Dacia)
- TA24 - Abrites Chrysler/Dodge/Jeep 2013+ Key
- TA27 - Megane 3 / Laguna 3 key PCB
- TA28 - Clio 4 / Captur KEYLESS key PCB
- TA29 - FIAT 500X keyless
- TA30 - DST-AES transponder emulator
- TA31 - Abrites extractor
- TA34 - ABRITES Renault Megane 4/Talisman KEYLESS key
- TA35 - ABRITES Renault Clio 4/Captur KEYLESS key
- TA36 - Abrites DST 40bit/DST+ 80bit Electronic key head
- TA38 - IC Replacement for Alfa Romeo Giulia/Stelvio
- TA39 - Renault Megane 4/Talisman keyless key
- TA40 - ABRITES Alfa Romeo Giulia/Stelvio key
- TA41 - Subaru DST-AES Emulator
- TA44 - AUDI BCM2 PCB FOR ORIGINAL KEY SHELL (868 MHZ)
- TA46 - AUDI BCM2 PCB FOR ORIGINAL KEY SHELL (433 MHZ)
- TA47 - AUDI BCM2 PCB FOR ORIGINAL KEY SHELL (315 MHZ)
- TA48 -ABRITES keyless key for Audi BCM2 vehicles (868 MHz)
- TA49 -ABRITES keyless key for Audi BCM2 vehicles (433 MHz)
- TA50 - ABRITES keyless key for Audi BCM2 vehicles (315 MHz)
- TA51 - Abrites Megamos AES emulator (ID88)
- TA52 - Universal BGA PCB for Mercedes-Benz vehicles (FBS3)
- TA54 - Abrites key for JLR
- TA56 - ABRITES KEY FOR JLR (315 MHZ)
- TA57 - ABRITES JLR KEY FOR 2018+ VEHICLES (433 MHZ)
- TA58 - ABRITES JLR KEY FOR 2018+ VEHICLES (315 MHZ)
- TA59 - Volkswagen Touareg keyless key (868 MHz)
- TA60 - Volkswagen Touareg key- (868 MHz)

- TA62 - ABRITES JLR KEY FOR 2020+ VEHICLES (433 MHZ)
- TA63 - ABRITES JLR KEY FOR 2020+ VEHICLES (315 MHZ)
- TA64 - ABRITES HITAG-AES Emulator
- TA65 - RENAULT CLIO V KEYLESS KEY
- TA66 - Abrites Key for 2018+ JLR vehicles (433 MHz)
- TA67 - Abrites Key for 2018+ JLR vehicles (315 MHz)
- TA68 - Abrites DST-AES transponder emulator
- TA69 - ABRITES infra-red Key for Mercedes-Benz trucks





You can find more information about the Abrites' keys either in our website <https://abrites.com/> or in our online store at <https://abrites.com/shop>

Emulators and Filters:

EM001 - ABRITES ESL EMULATOR FOR MERCEDES



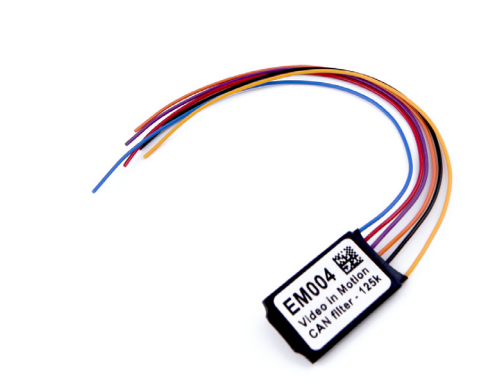
EM002 - ABRITES ESL EMULATOR FOR RENAULT



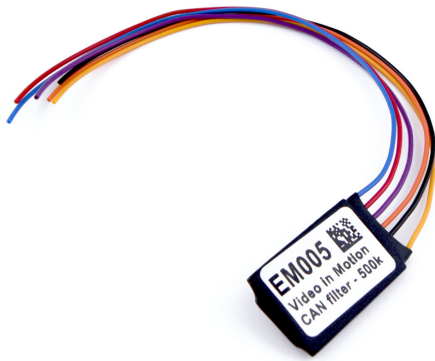
EM003 - IMMO PARTS EMULATOR FOR VAG



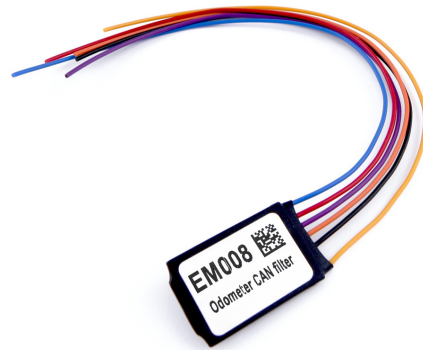
EM004 EMULATOR - VIDEO IN MOTION CAN FILTER 125K (W167 W292)



*EM005 EMULATOR - VIDEO IN MOTION
CAN FILTER 500K (W216 W221)*



*EM008 EMULATOR - MERCEDES
ODOMETER CALIBRATION EMULATOR
FOR W204,W205,W212 (FBS3/FBS4)*



*EM009 EMULATOR - MERCEDES
ODOMETER CORRECTION EMULATOR
WITH JUMPER CABLE FOR DASH FOR
W204/W212 (FBS3/FBS4)*



*EM010 - RENAULT ESL EMULATOR WITH
CLIO IV TYPE CONNECTO*



Outdated - now EM018



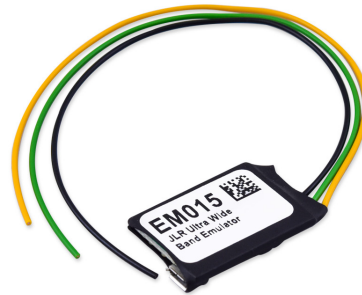
EM011 - RENAULT ESL EMULATOR WITH MEGANE IV/TALISMAN TYPE CONNECTOR



EM012 - ABRITES ESL EMULATOR FOR MERCEDES-BENZ W204/W207/W212



EM014 - ODOMETER CALIBRATION EMULATOR FOR MERCEDES-BENZ W213



EM015 - JLR ULTRA-WIDE BAND EMULATOR (FOR CONNECTING EM015, PLEASE REFER TO THE ABRITES DIAGNOSTICS FOR JAGUAR/LAND ROVER USER MANUAL):



EM018 - ODOMETER CALIBRATION WITH JUMPER CABLE FOR DASH - W204, W212, W205 (FBS3/FBS4)

Abrates Tough Cases:

*ATC01 - ABRITES TOUGH CASE -
SMALL SIZE*



*ATC02 - ABRITES TOUGH CASE - MEDIUM
SIZE*



ATC03 - ABRITES TOUGH CASE - LARGE SIZE



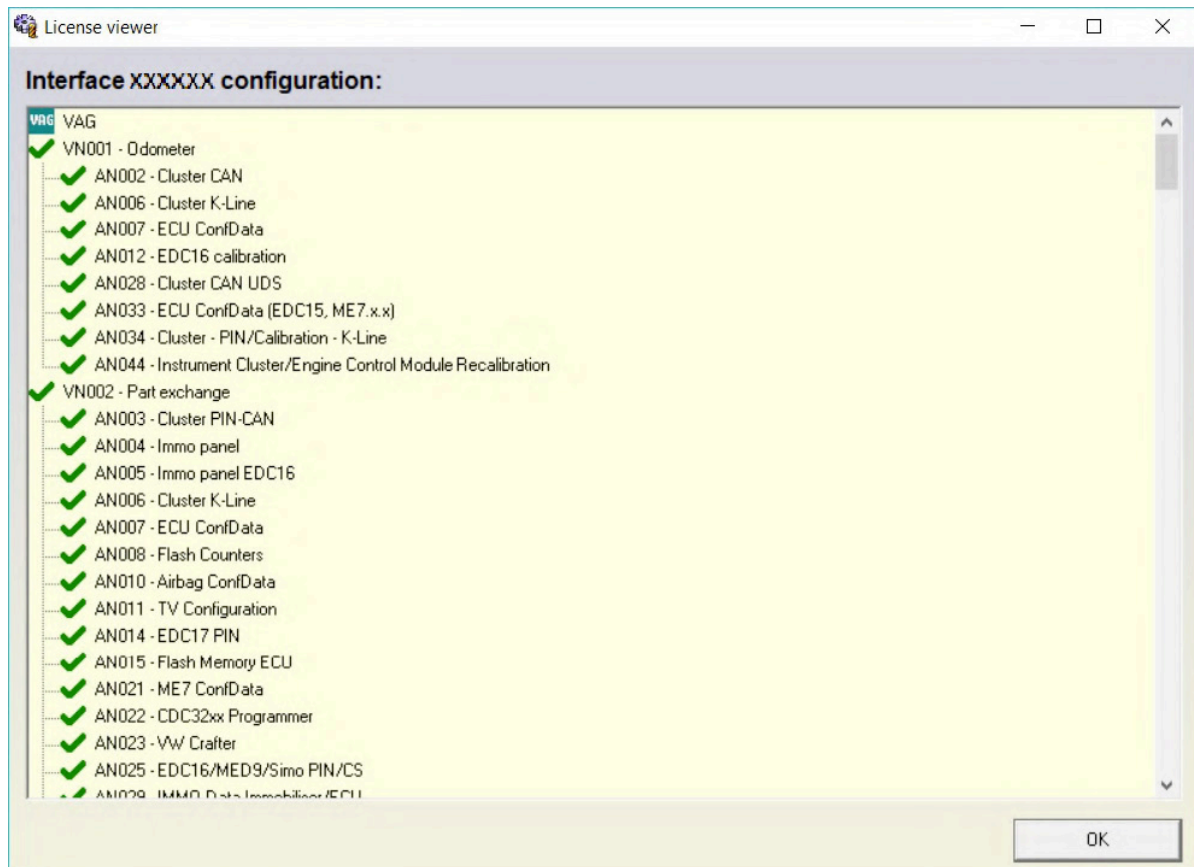
Battery Support Unit:

BSU02 - BATTERY SUPPORT UNIT - FLASH-MEM 100



7. License viewer

CB100 - AVDI OBDII CABLE (SAE J1962)



Using the license viewer you can check your licenses yourself at any time by typing "License viewer" in the Windows search menu.

8. Functionalities of the Basic AVDI software package

Each AVDI includes an Annual Maintenance Subscription ([AMS](#)) and Support Plan Service ([SPS](#)) for the first year of use in order to make sure that you get the full AVDI experience straight away. The AMS allows receiving the latest updates on the AVDI diagnostic software, and the SPS guarantees swift and effective technical support from our team of experienced professionals.

Furthermore, you will be able to perform basic diagnostics to all supported brands - Audi, Volkswagen, Seat, Skoda, Bentley, Lamborghini, BMW, MINI, Rolls Royce, Renault, Dacia, Mercedes-Benz, SMART, Mitsubishi, GM, Peugeot, Citroen, Opel/Vauxhall, Porsche, Honda, Ford, Mazda, Jaguar, Land Rover, Toyota, Lexus, Volvo, FIAT, Alfa Romeo, Lancia, Jeep, Subaru, Nissan, Infiniti, Chrysler, Dodge, Kia, Hyundai, Suzuki, Daihatsu, DAF, Aprilia, BMW, Bombardier Recreational Products and others.

The basic diagnostics that can be performed to all brands listed above are as follows:

- Complete vehicle scan
- Module identification – see all modules in the vehicle, complete with VIN and part numbers (where applicable)
- Reading and clearing diagnostic trouble codes (DTCs)
- Live data display – see live data from the sensors in the vehicle in real time
- Actuator testing – identify any possible issues in the car by performing actuator tests

The basic AVDI software package offers a range of dynamic functionalities that are continuously evolving. We are committed to enhancing your experience by regularly introducing new features and seamlessly integrating additional licenses into the basic package. This constant evolution ensures that you receive maximum value from your AVDI usage.

Here are some of the most interesting features included in the basic package:

BMW

- EWS1/EWS2 key programming by EWS dump, using the ZN002 or ZN003 PROTAG V2
- EWS3 key programming using the ZN055 ABPROG EWS3 adapter and the ABPROG
- CAS1/CAS2/CAS3/CAS3+/BDC key programming completely by OBDII(ZN002 or ZN003 PROTAG V2 is required)

Renault/Dacia

- Key programming for all vehicles up to 2014 (including Clio IV)
- Key programming for the SMART 453/ Renault Twingo III

Mercedes Benz

- SCN coding (e.g. DPF regeneration) in Mercedes Vehicles
- Mercedes-Benz eVito Speed Limit Calibration
- Key programming by dump (DAS 2/2a/2b/ DAS 3)
- Cluster calibration and adaptation for vehicles up to 2014
- SCN coding completely by OBDII (no Xentry online account is required)
- CPC modifications by OBDII:
- VMAX limiter removal
- Exhaust flaps adjustment
- Torque limiter adjustment
- SBC counter reset
- Enable Video in Motion

Toyota

- Key programming for all vehicles produced up to 2018 (G-type keys (mechanical and smart keys) and H-type keys (only smart keys),
- Key identification and cloning,
- Reset and subsequent reuse of smart keys (ZN002 or ZN003 PROTAG V2 is required)

Honda

- Key programming for all vehicles up to 2022

FCA

- Key Programming for many models up to 2019

Jaguar and Land Rover

- Key Programming and Remote control programming for vehicle up to 2018

Tesla

- Diagnostics and Service functions

You can find all details about the basic AVDI functionalities in our website abrites.com > section "AVDI", we are constantly adding new features, so make sure you check the full description in the page.

([AVDI website page](#))